



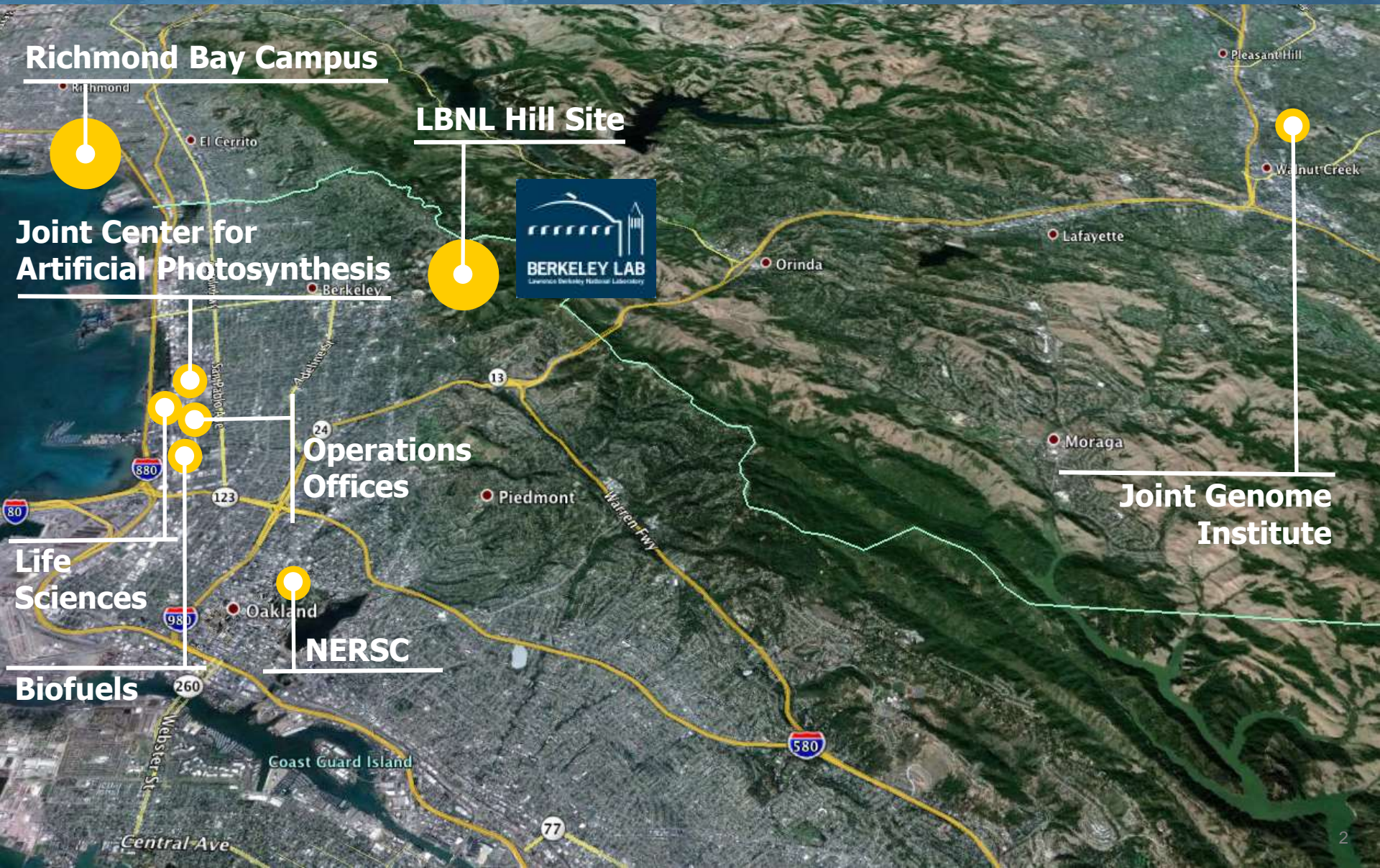
Richmond Bay Campus Update

Doug Lockhart, Project Director, LBNL

Meeting of the Community Advisory Group

November 12, 2012

Integrating Biosciences requires consolidation of offsite programs – from seven sites to two



Richmond Bay Campus

LBNL Hill Site

Joint Center for Artificial Photosynthesis

Operations Offices

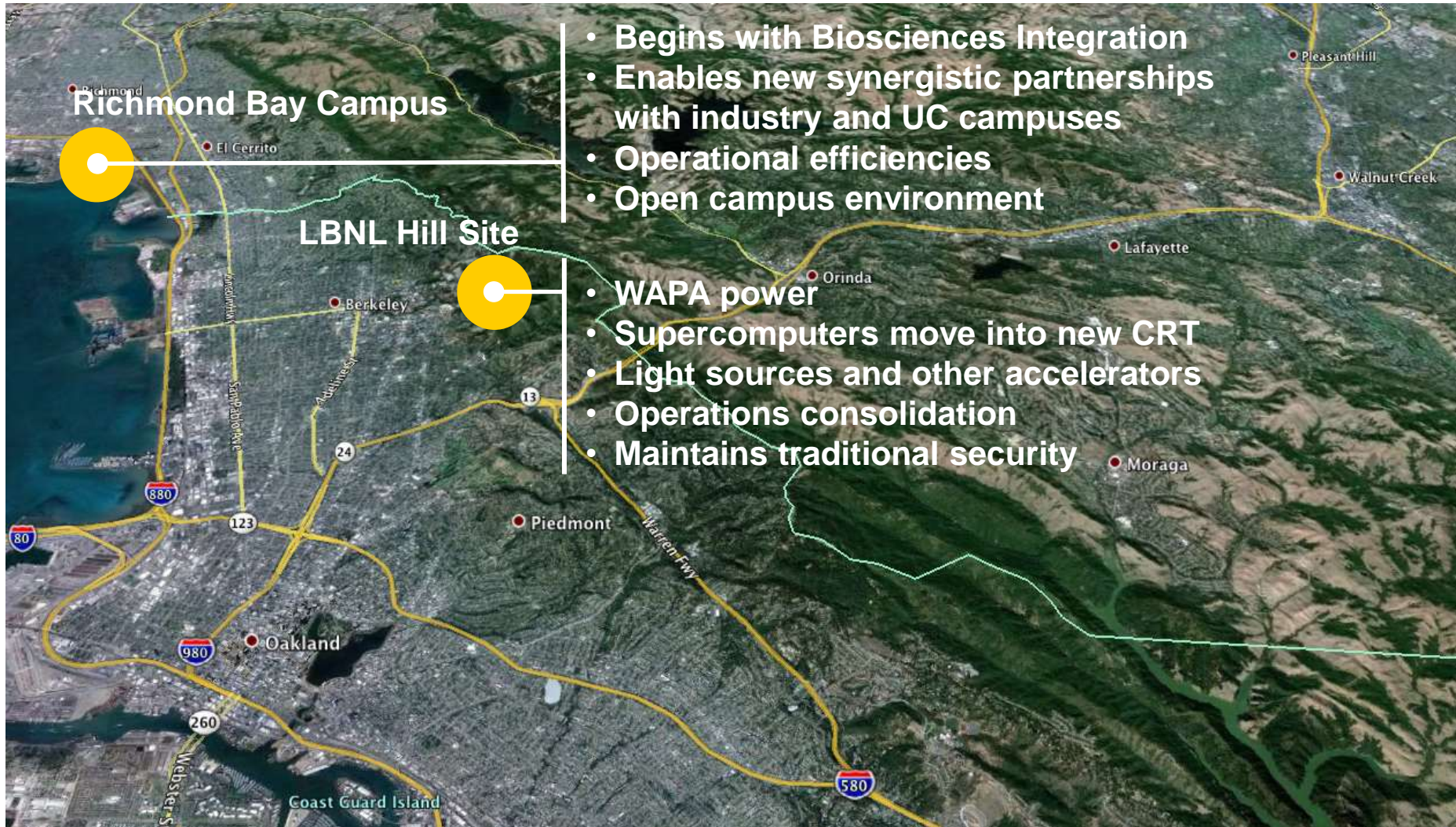
Life Sciences

NERSC

Biofuels

Joint Genome Institute

Berkeley Lab 2017: RBC and Hill Site -- Integrated Vision



- Begins with Biosciences Integration
- Enables new synergistic partnerships with industry and UC campuses
- Operational efficiencies
- Open campus environment

- WAPA power
- Supercomputers move into new CRT
- Light sources and other accelerators
- Operations consolidation
- Maintains traditional security



A Shared Vision:

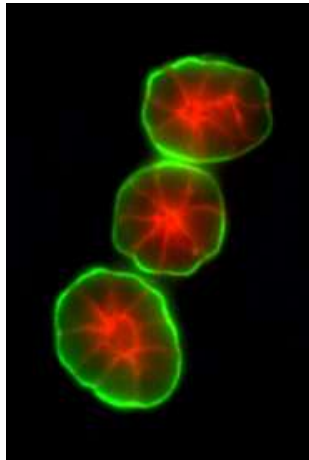
“A state-of-the-art, inspirational and sustainable place to produce world-class collaborative science for healthy living and sustainable communities”

Richmond Bay Campus Research Goals



The discovery of solutions for 21st century challenges to energy, environment, human health, and the global economy.

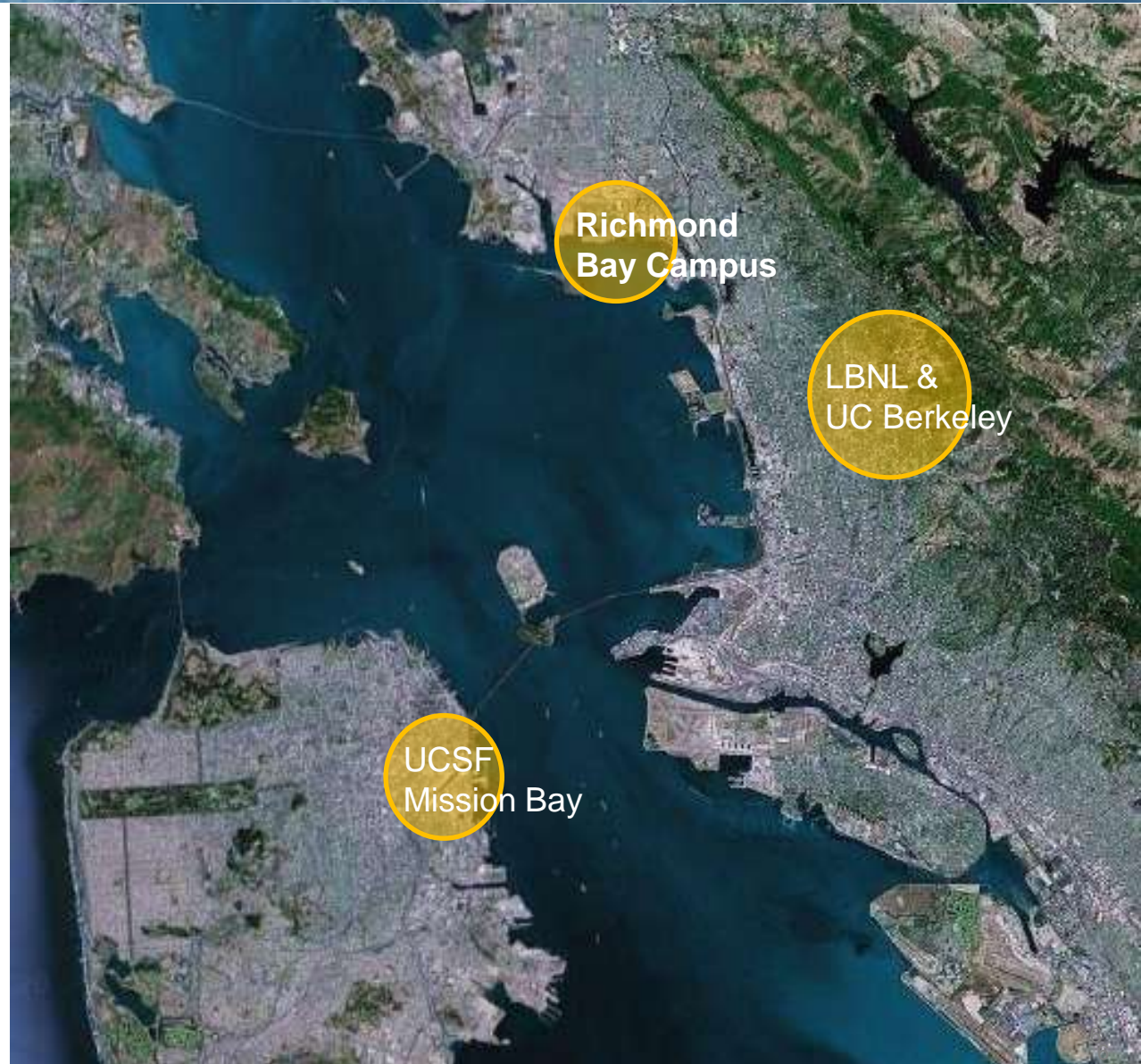
- **Emphasis on bioscience solutions for**
 - Carbon-neutral fuels
 - Reduced human environmental footprint
 - Improved human health
- **Sustainable transportation**
- **Advanced manufacturing and design**
- **Commercializing technology research**



RBC: Catalyst for Regional Growth



- **Center for Innovation**
- **Capacity for other research facilities – public and private**
- **Support for broader economic revitalization**
- **Vibrant mix of new and existing uses**
- **Efficient connections to freeways, BART, and the Bay Trail**
- **Upcoming: South Richmond Specific Plan**



Richmond Bay Campus Site



- **UC-owned Properties**
- **Total acres: 195**
- **Upland acres: 136**
- **81 structures**
- **1.05 million GSF**
- **Population of 300**
- **Existing activities:**
 - Research
 - Offices
 - Storage



Scale Comparisons



RBC and UC Berkeley core campus (180 acres)

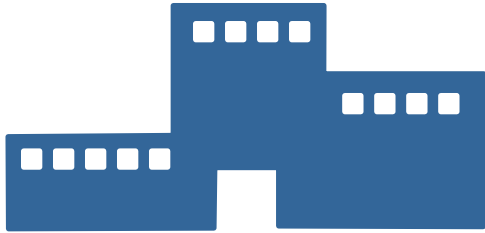


RBC and UCSF Mission Bay (43 acres)



RBC (136 acres)

Long-Term potential -- multiple phases over ~40 years:



Up to 5.4 M square feet and a population of 10,000

Functions:

- Research labs
- Offices, Conference space
- Dining / Cafes
- Auditorium / Visitor center
- Operations facilities
- Parking
- Outdoor space

Population:

- LBNL and UC Berkeley research scientists and faculty
- Graduate and post-doctoral students
- Undergraduate students and interns
- Administrative staff
- Operational staff
- Third party tenants

Concept Plan 2012



5.4M sq ft

- Distinct walkable neighborhoods
- Shared activity zones
- Diversity of open edges and public access opportunities
- Multi-modal grid connected to surrounding streets/trails
- Distinct visitor arrival experience
- Deflects wind; creates sheltered spaces
- East-west solar building orientation



Concept Plan – 1st Development Area



1st Development Area:

- 16 acres
- Up to 800,000 gsf of facilities capacity
- Located to attract top researchers

Proposed Programs:

- Joint Genome Institute
- Joint BioEnergy Institute
- Advanced Biofuels
- KBase
- Life Sciences
- Earth Sciences

Proposed Services:

- Dining
- Multi-function conference
- Parking



Timeline



- **2013** **Long Range Development Plan**
CEQA/NEPA EIR/EA
Conceptual Design Development
- **2014 – 2017** **If LRDP and Project Funding is Approved:**
Design and Construction
Moves and Fitup
- **2018 and Beyond: Future Phases**



DISCUSSION



Richmond Bay Campus
Birds-Eye View at Full Buildout
R&D Facilities 5,400,000 GSF
Population 10,000
Parking Spaces 6,000