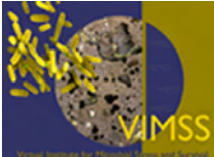


Field Investigations of Lactate-Stimulated Bioreduction of Cr(VI) at Hanford 100H



T. C. Hazen, B. Faybishenko, D. Joyner, S. Borglin, E. Brodie, S. Hubbard, K. Williams, J. Peterson, J. Wan, T. Tokunaga, M. Firestone (LBNL, University of California–Berkeley), P. E. Long, C. T. Resch, and D. Newcomer (Pacific Northwest National Lab), S. Koenigsberg and A. Willet (Regenesis, Ltd.)

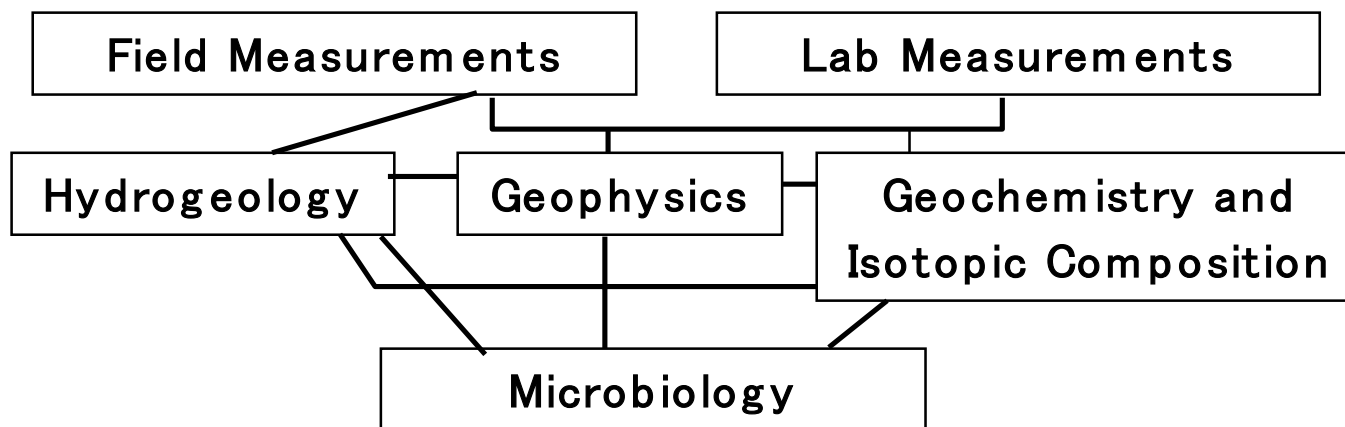
Pacific Northwest National Laboratory
...delivering breakthrough science and technology



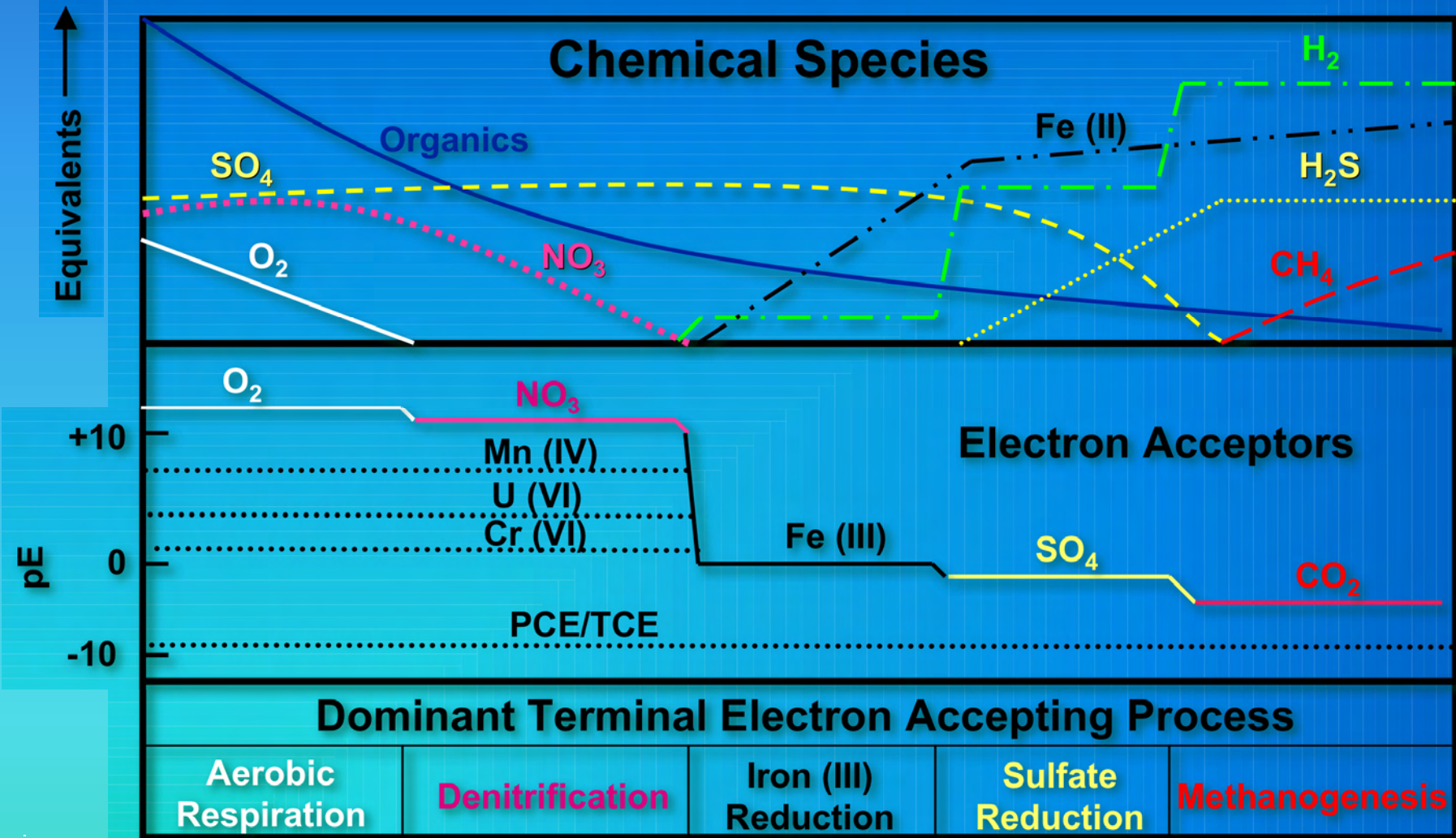
Overall Objective

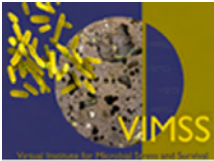
To carry out field investigations to assess the potential for immobilizing and detoxifying chromium-contaminated groundwater using lactate-stimulated bioreduction of Cr(VI) to Cr(III) at the Hanford 100H site

Integrated Approach



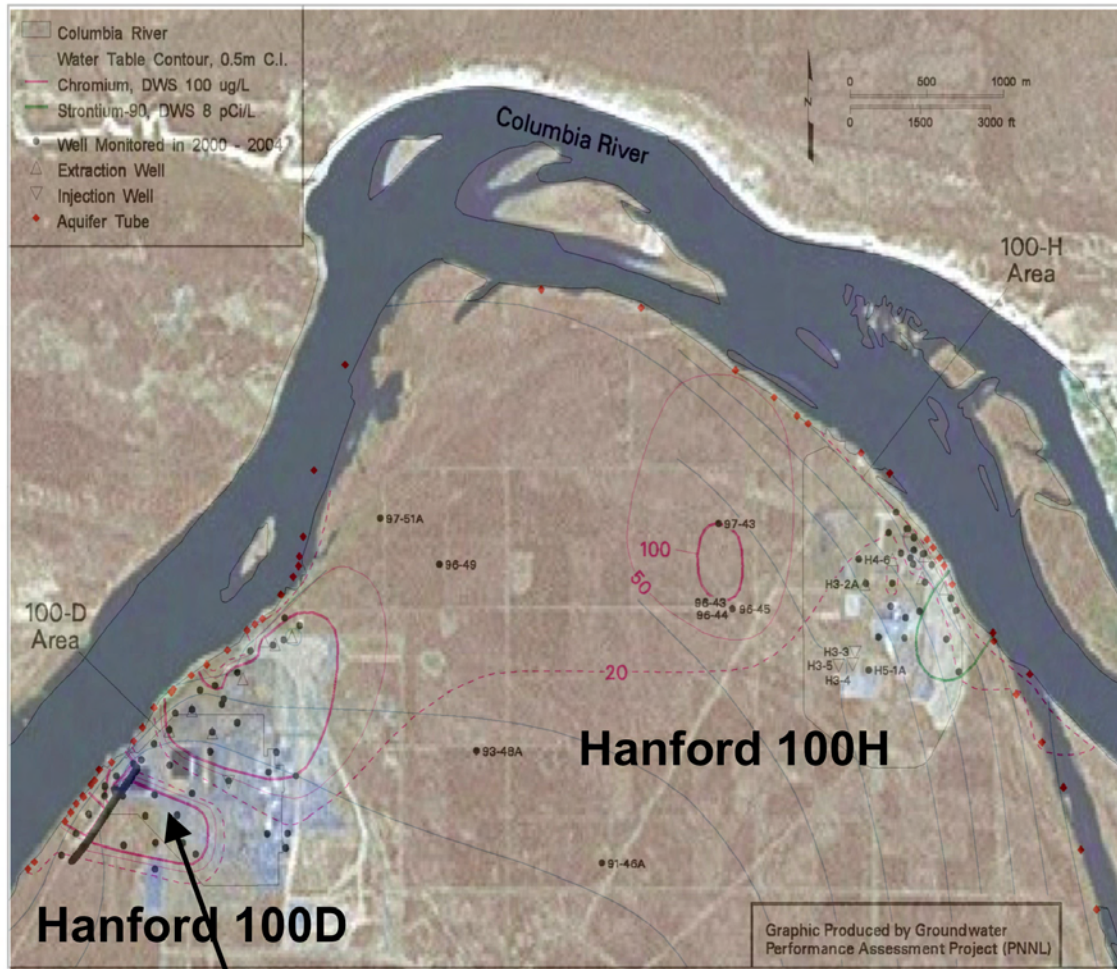
Critical Biogeochemistry





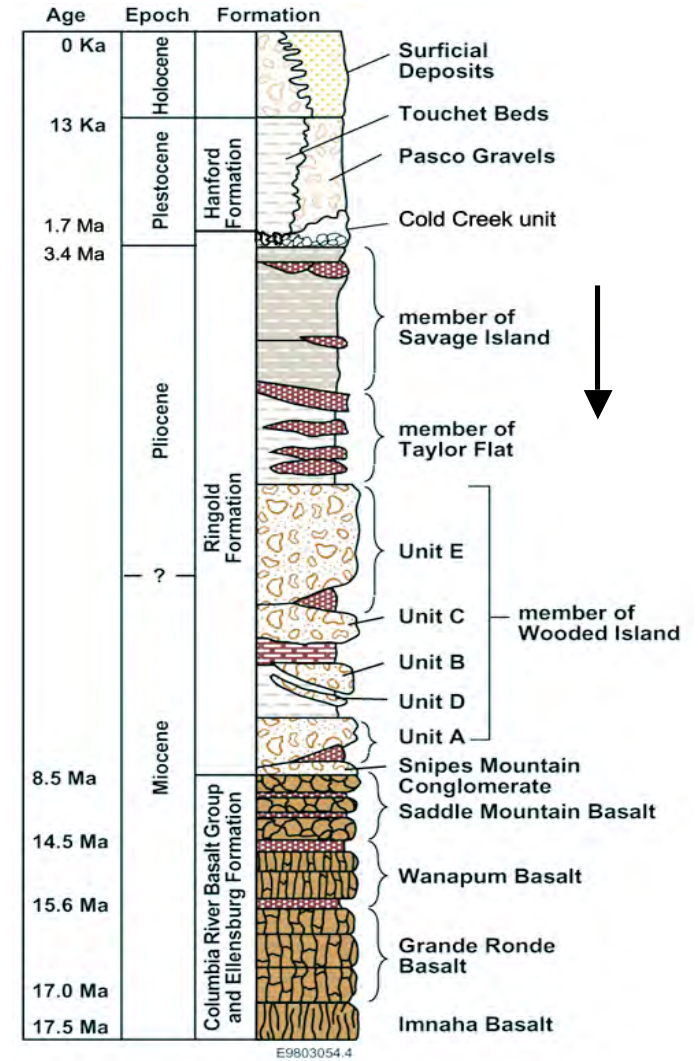
Hanford 100H Site Characterization

Cr Concentration Map



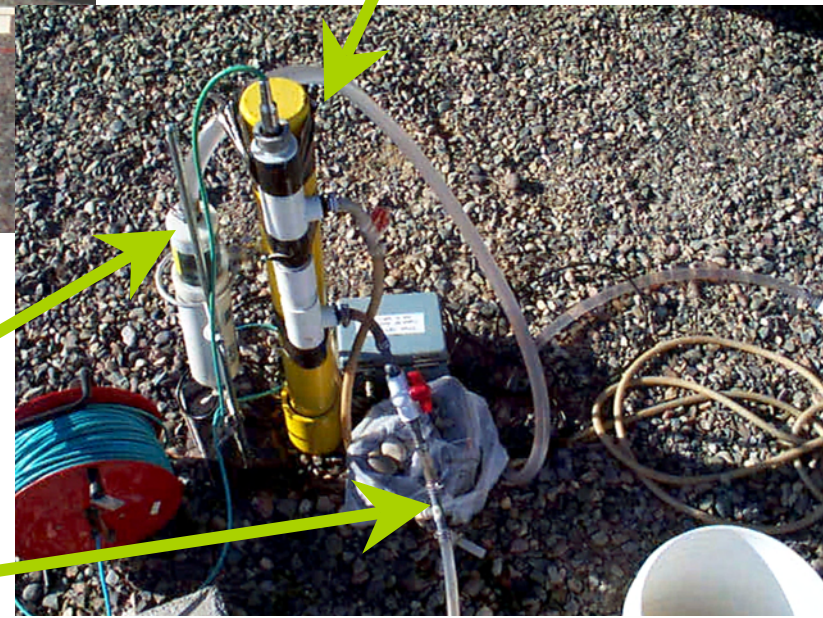
The Cr source is believed to be sodium dichromate ($\text{Na}_2\text{Cr}_2\text{O}_7 \cdot 2\text{H}_2\text{O}$)

Lithological Column



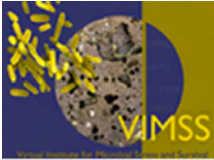


Flow cell with Br sensor

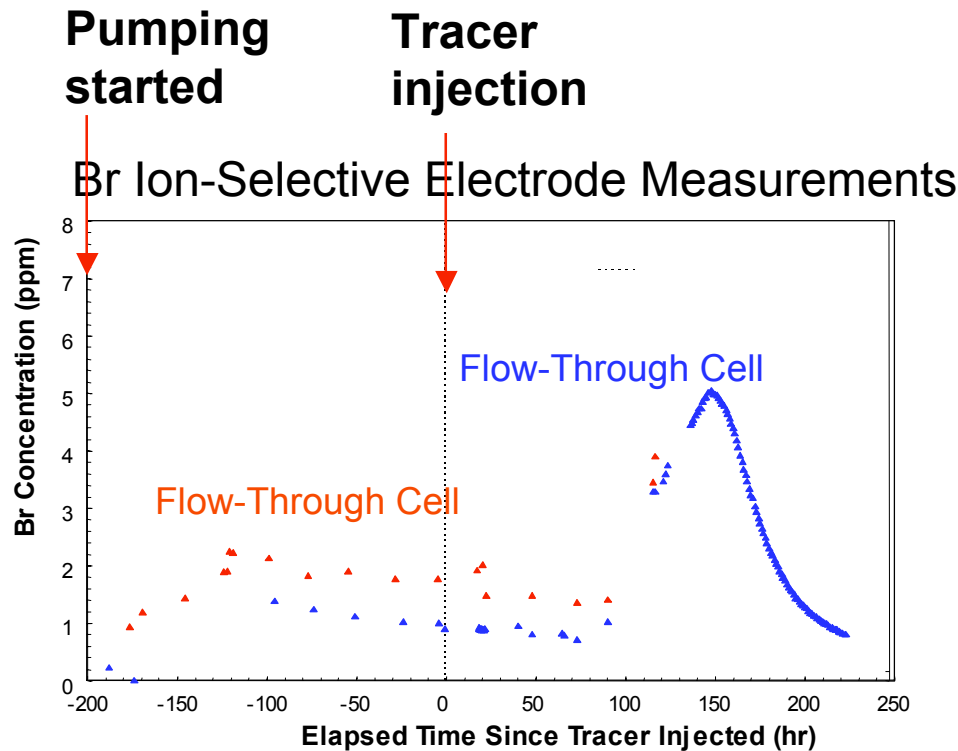


Flow cell with a multiparameter probe
(pH, DO, conductivity, temperature)

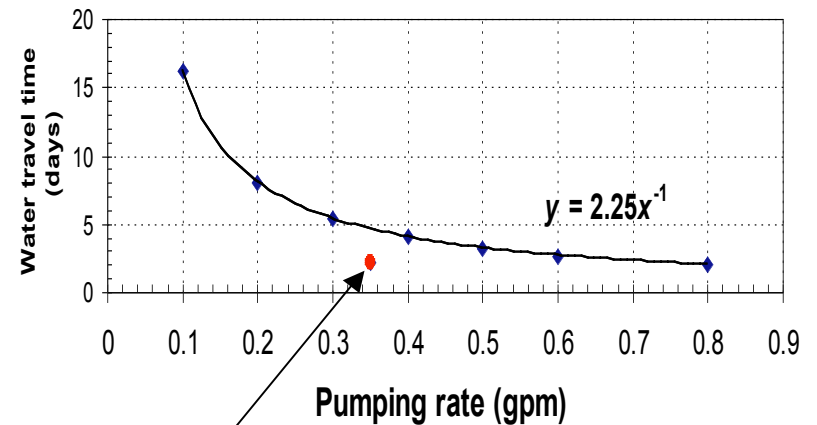
Sampling port



Br-Injection and Pumping Tests



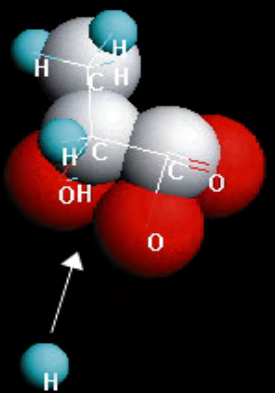
Water travel time between the injection and pumping wells vs. the pumping rate



For a distance of 4 m from the pumping well, $q=0.35$ gpm, water travel time is 2.75 days

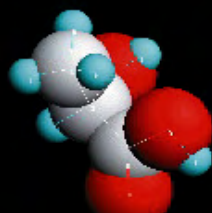
$K_s = 3.7-7.4$ m/day

Effective porosity = 0.2-0.26

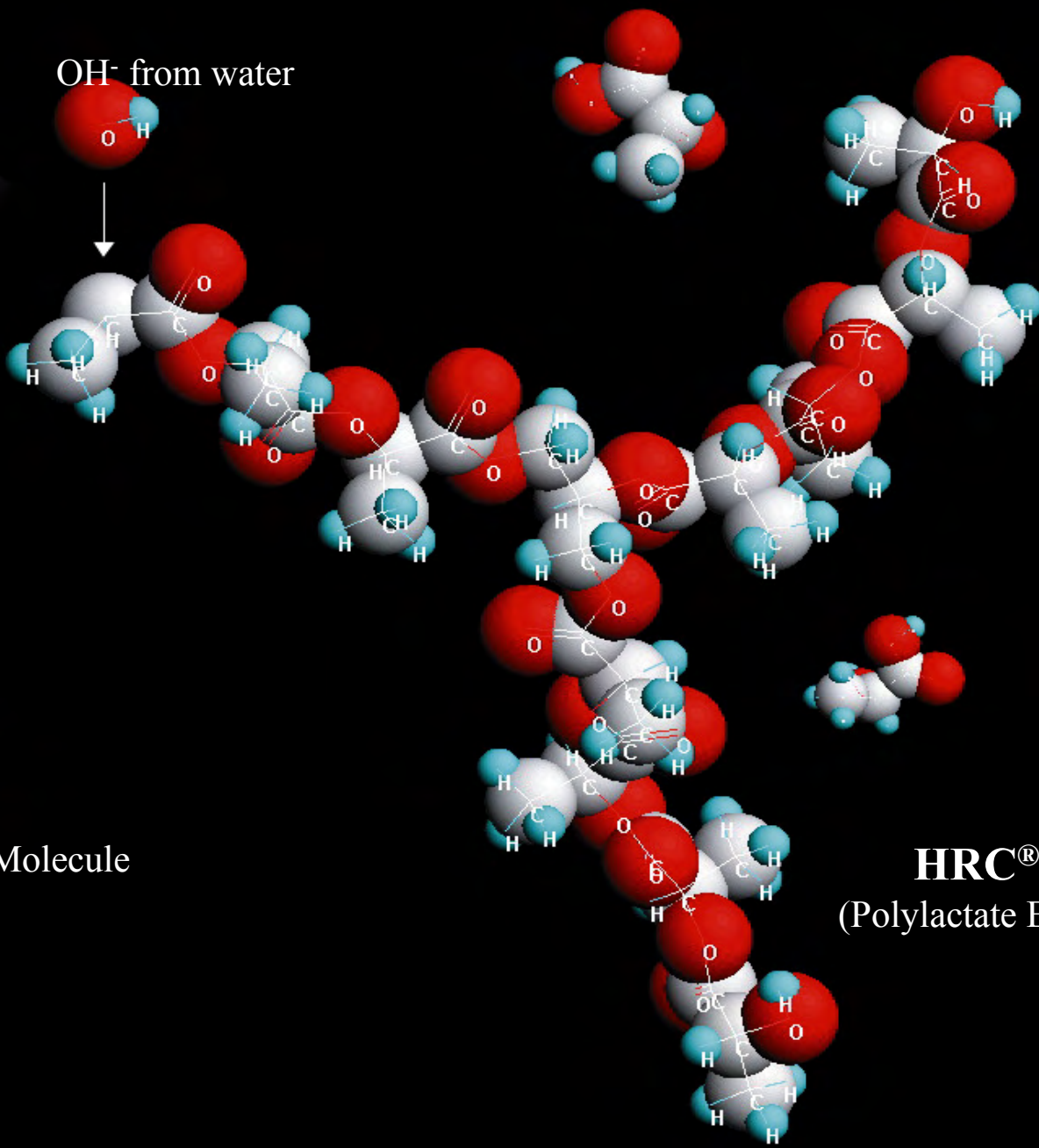


H^+ from water

OH^- from water

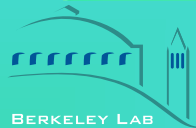
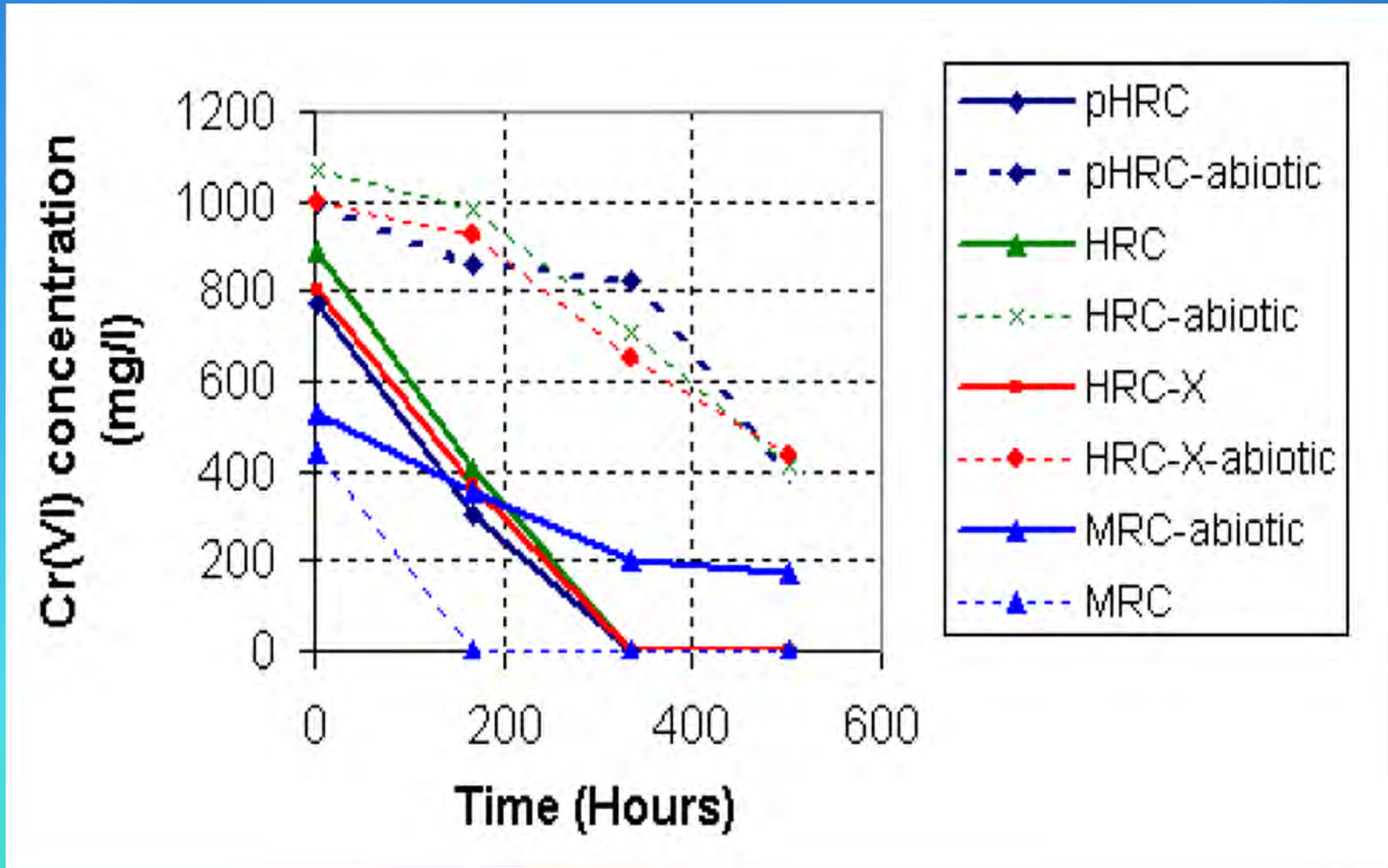


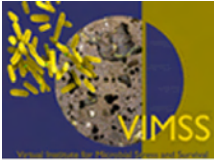
Lactic Acid Molecule



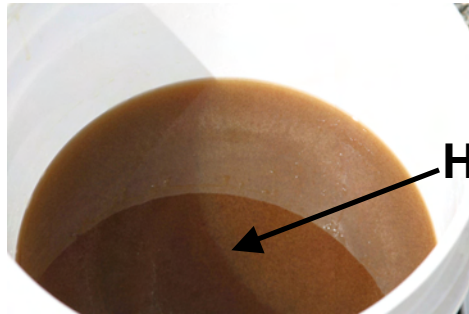
HRC[®]
(Polylactate Ester)

Lactate-Induced Bioreduction of Cr(IV)





Field HRC Injection Test



Injection of 40 lbs of ^{13}C -labeled HRC
Well 699-96-45, August 3, 2004

Pumping - 27 days
Well 699-96-44

**Injection at depths
of 44 ft to 50 ft**

**Hanford sandy gravel
and gravelly sand**

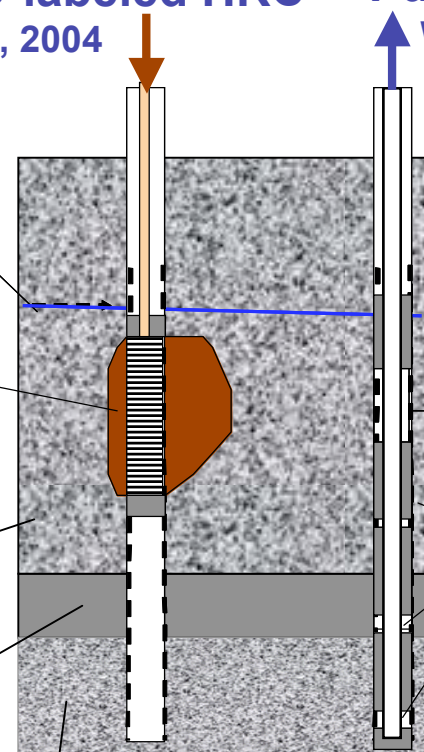
Ringold clay

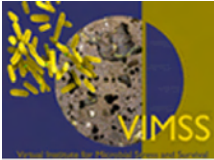
Ringold silt

Groundwater level

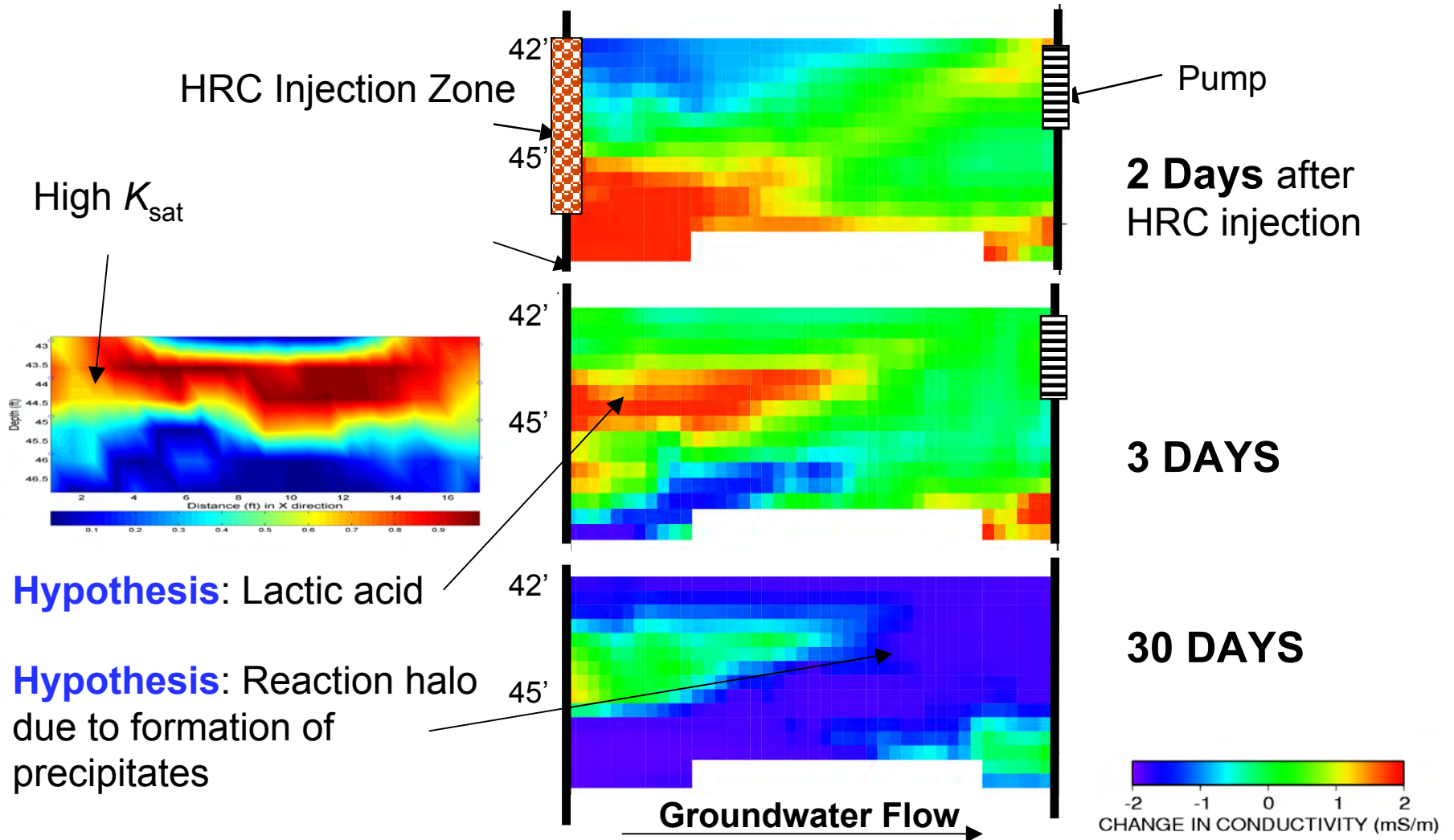
Pumping

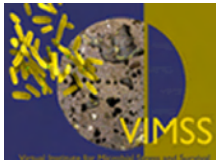
**Water
samplers**



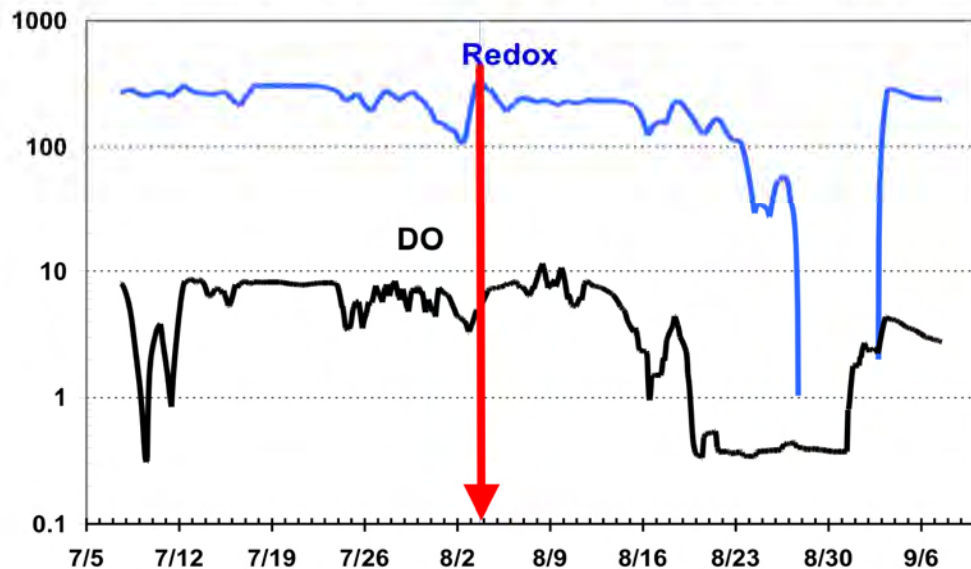
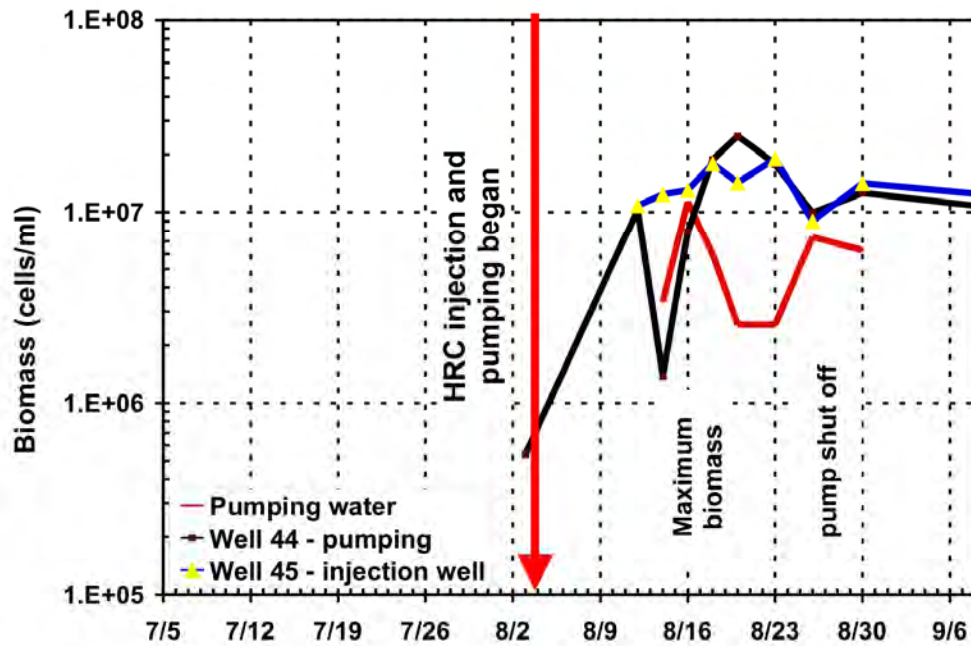


Post-HRC Injection Changes in Electrical Conductivity

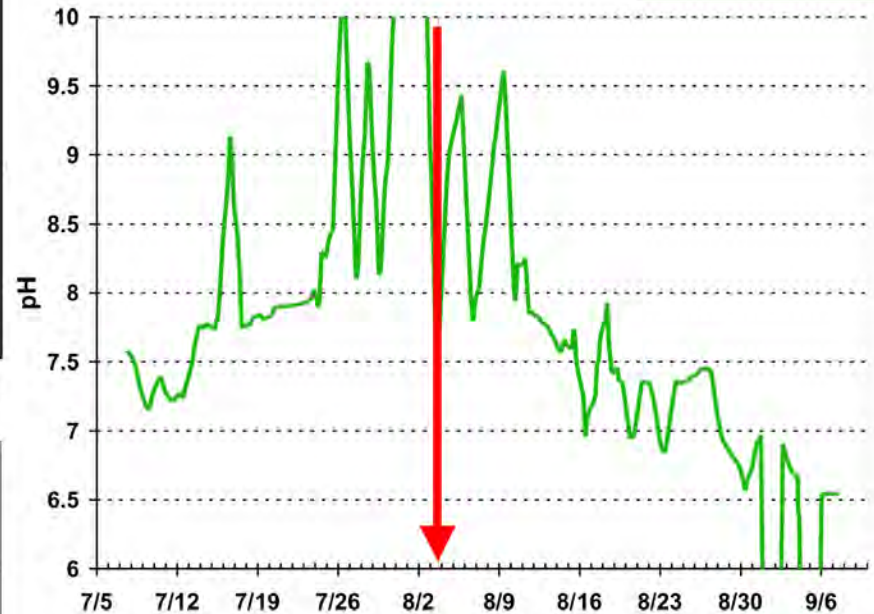
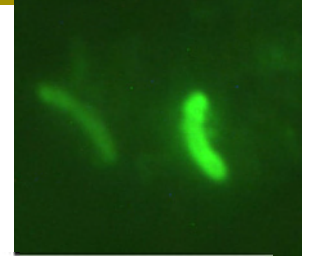




Results of HRC Biostimulation

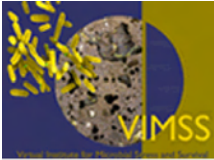


D. vulgaris (direct fluorescent antibody)



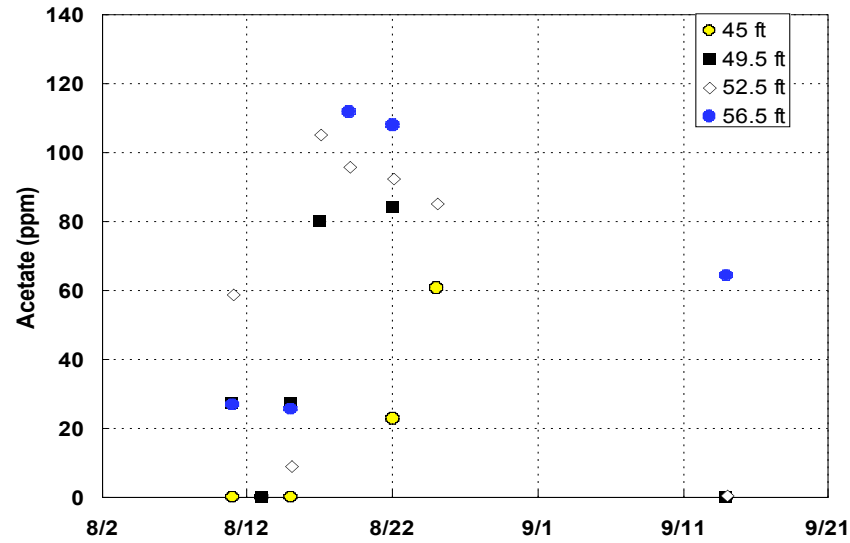
Redox dropped from 240 to -130 mV

DO dropped from 9 mg/l (~100%)
to 0.35 mg/l (4.5%)

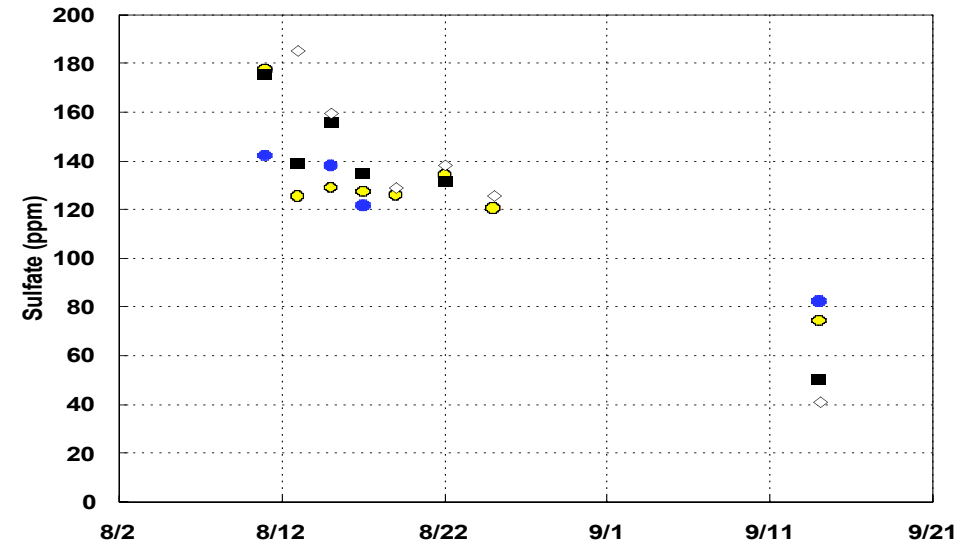


Biogeochemical Evidence of Microbial Metabolism in Groundwater

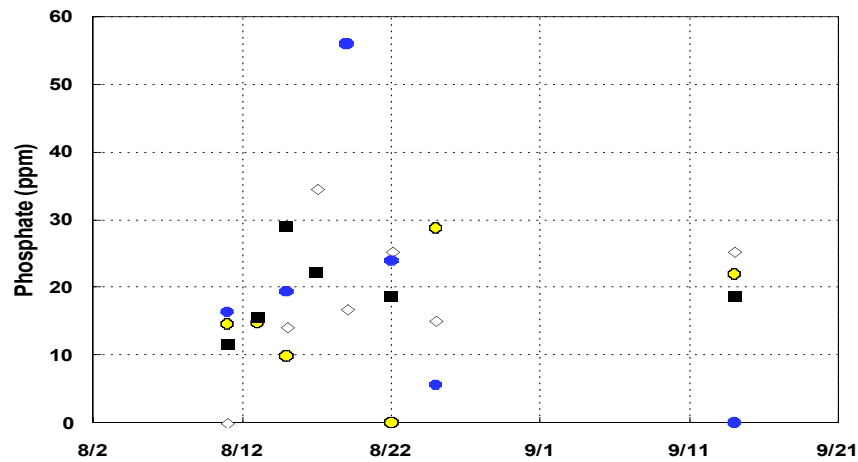
Acetate increase



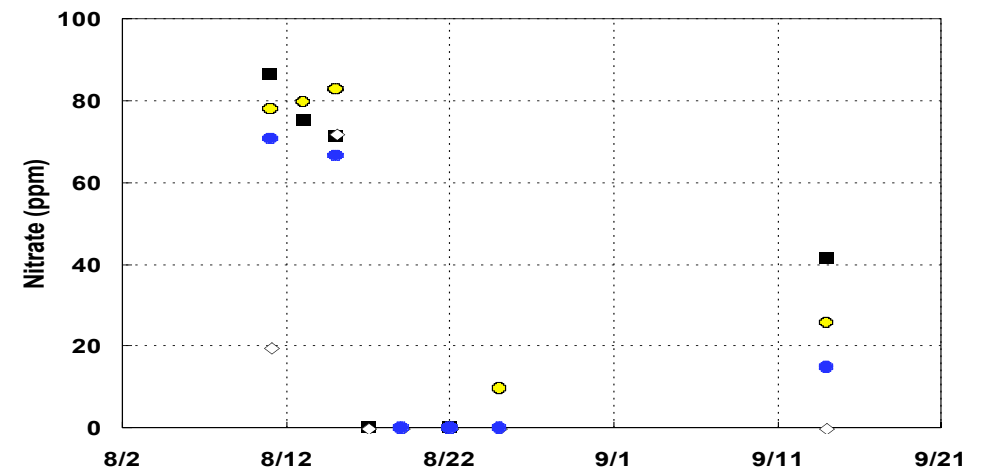
Sulfate reduction

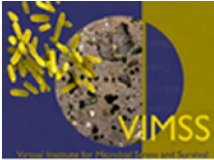


Phosphate increase

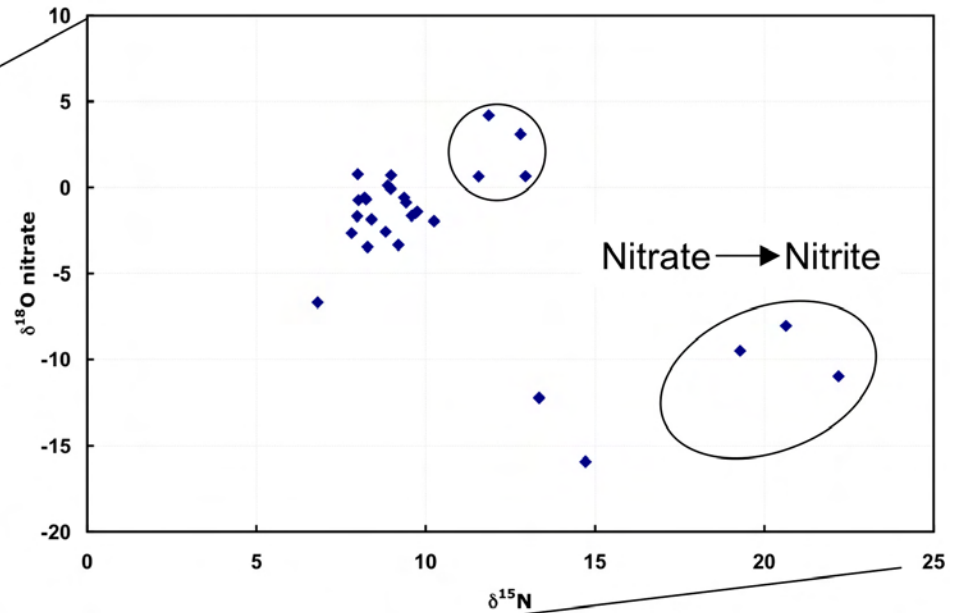
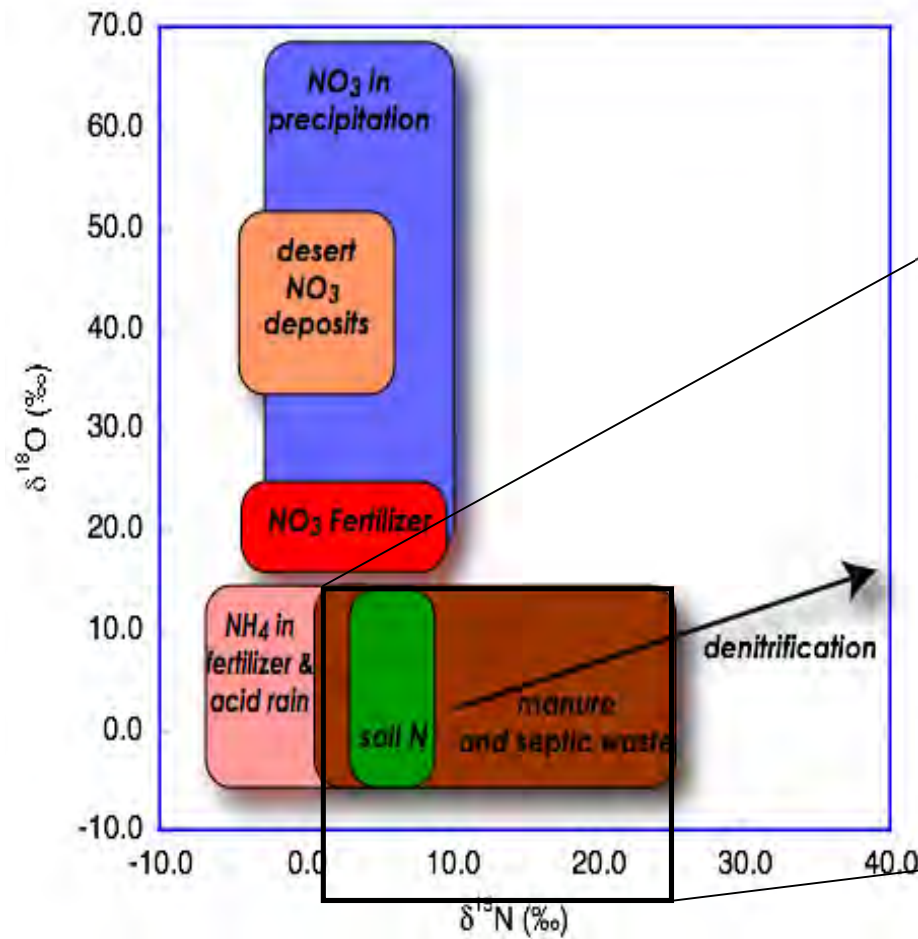


Nitrate decrease



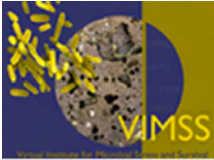


Biogeochemical Evidence of Microbial Metabolism in Groundwater

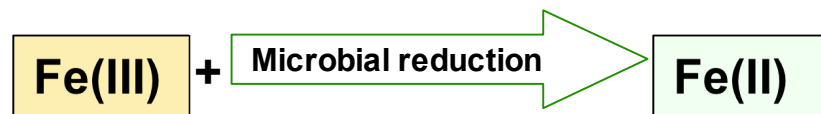
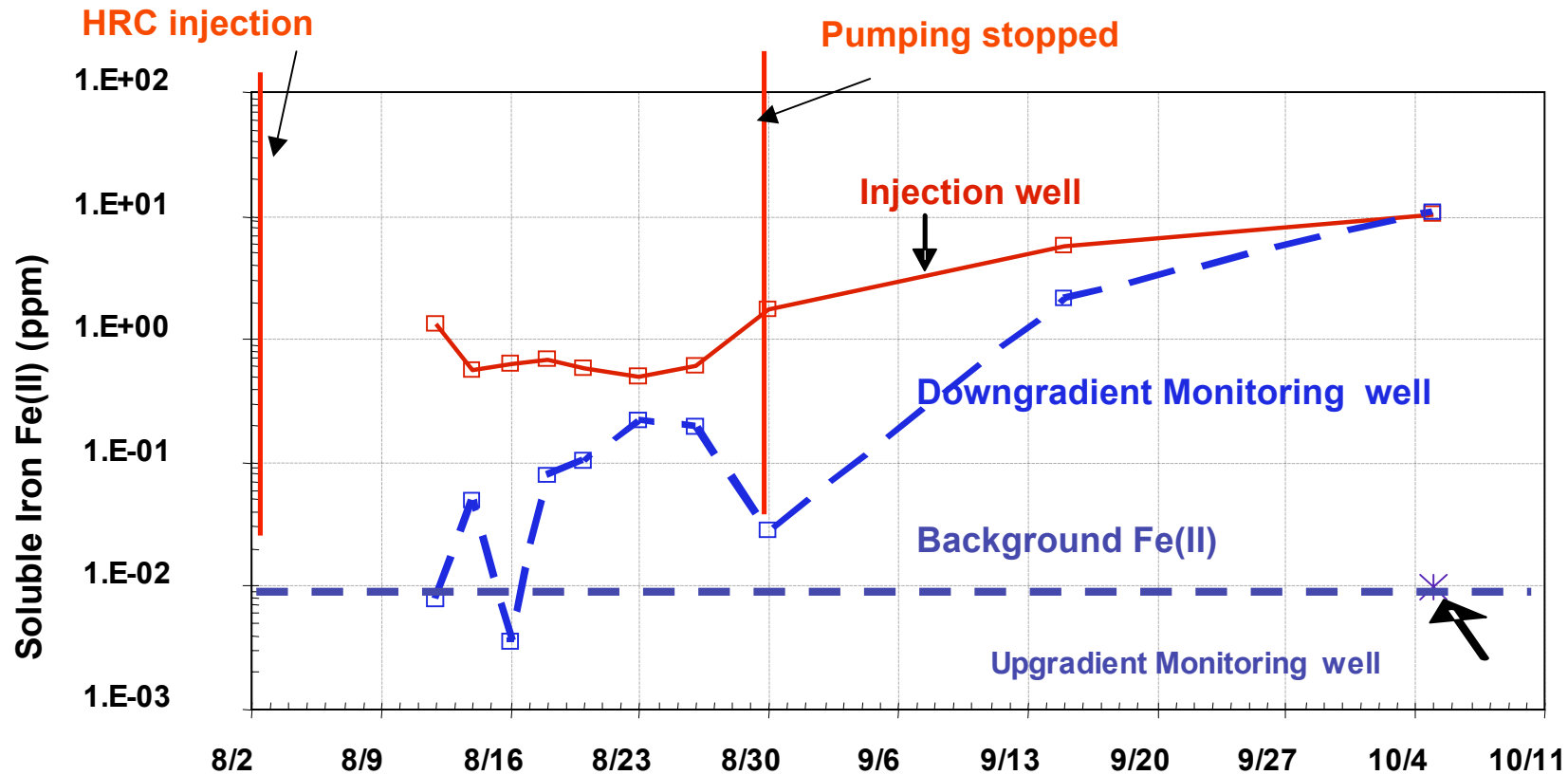


Isotopic Composition of Nitrate Indicates Denitrification

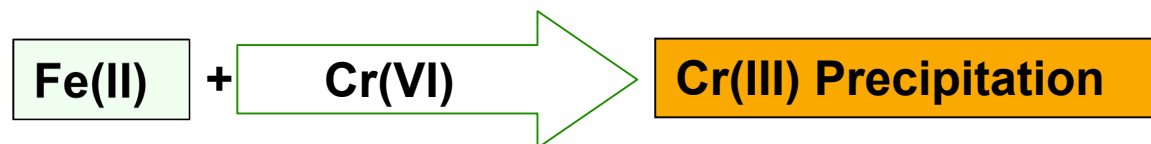
Kendall and McDonnell, 1998



Geochemical Evidence of Microbial Metabolism in Groundwater

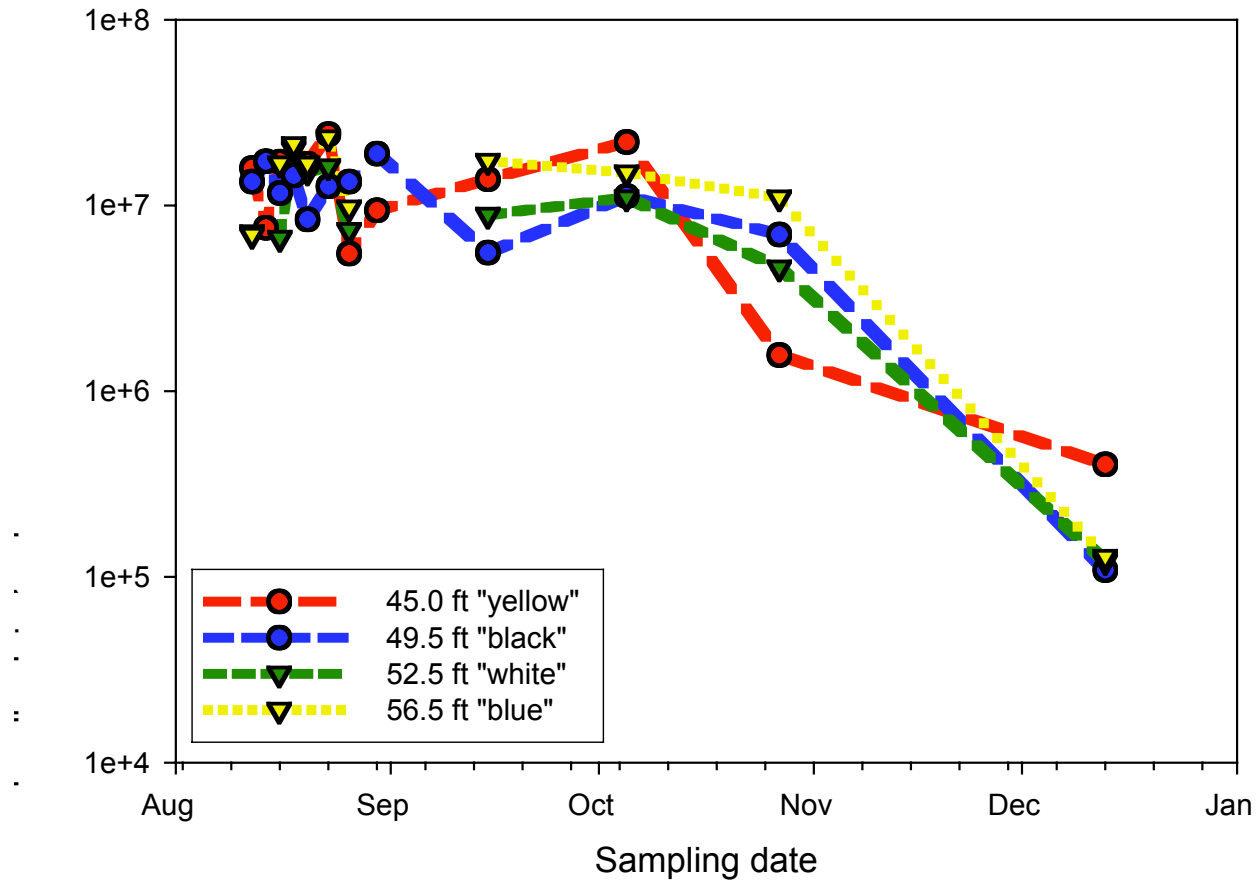


Increase in Ferrous Concentration after the HRC Injection

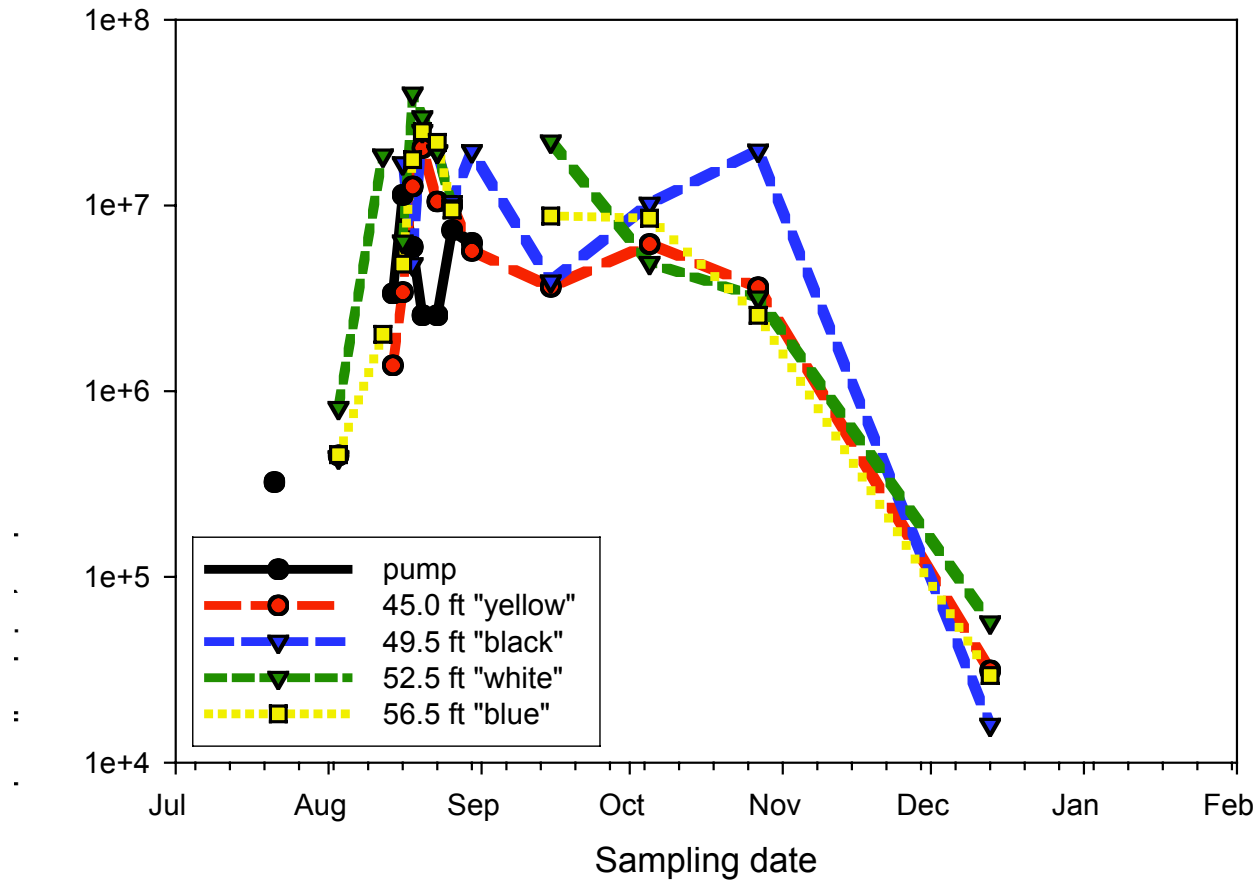


Acridine orange direct counts:

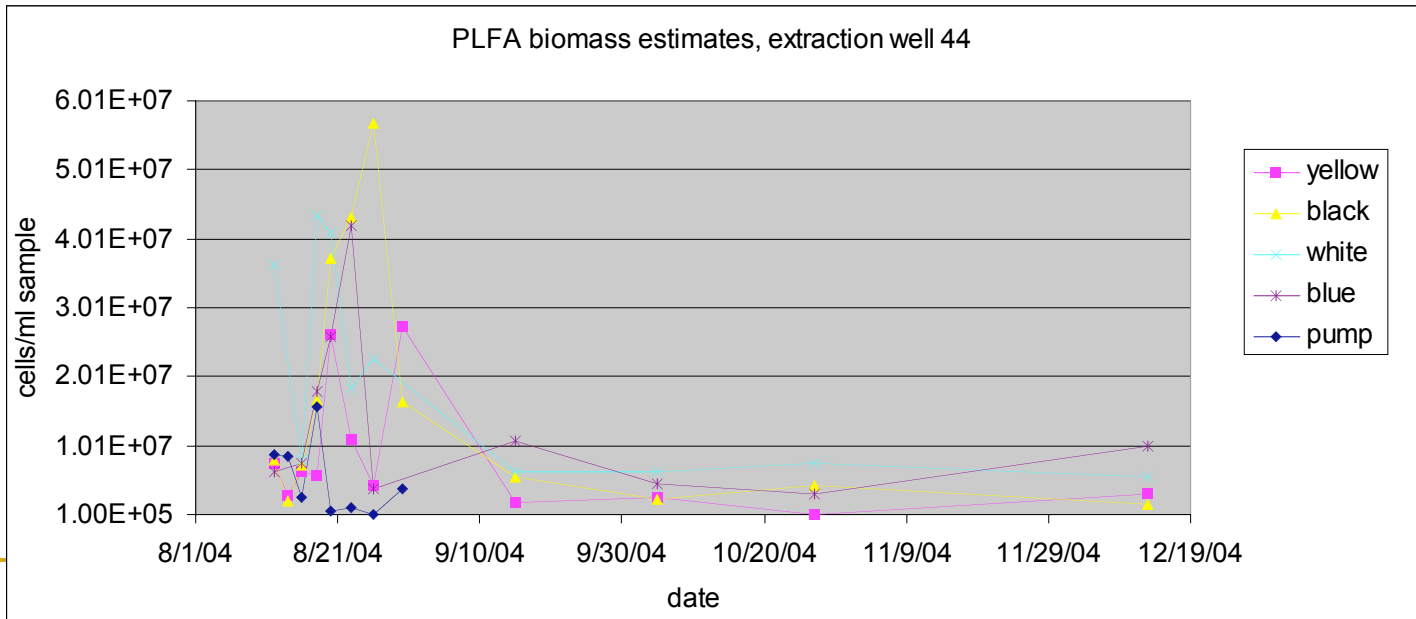
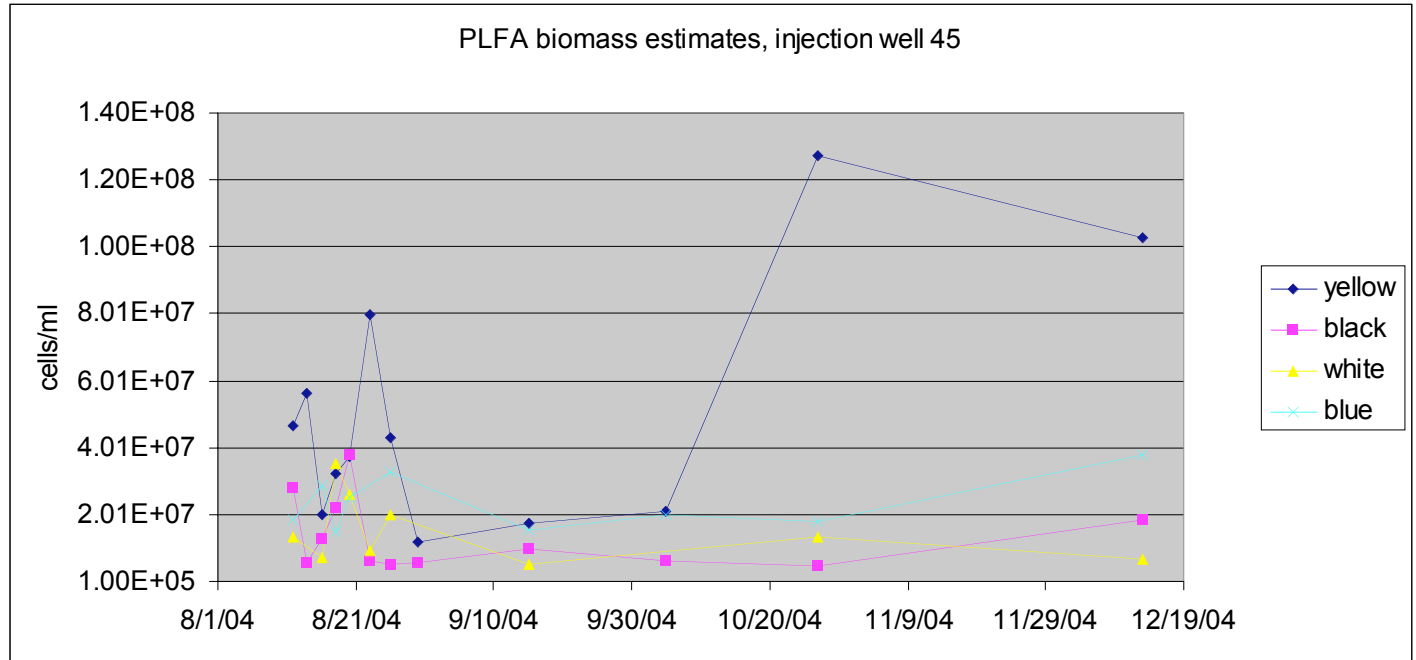
Injection well - 45



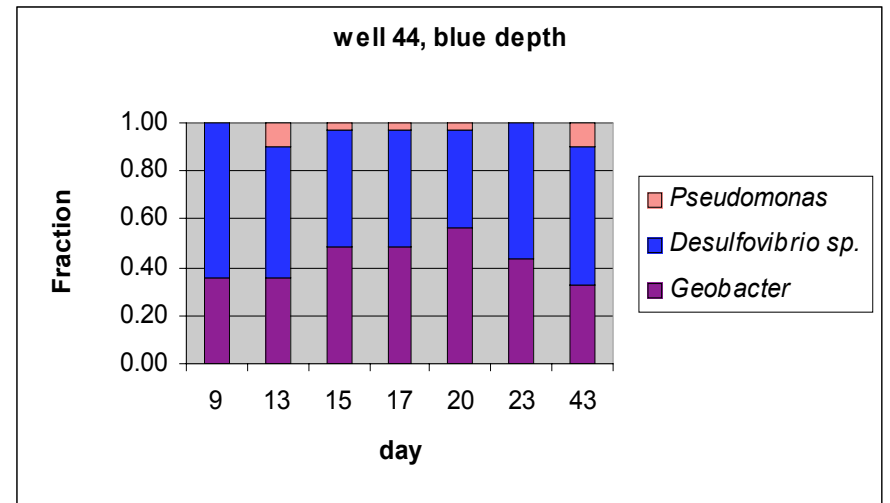
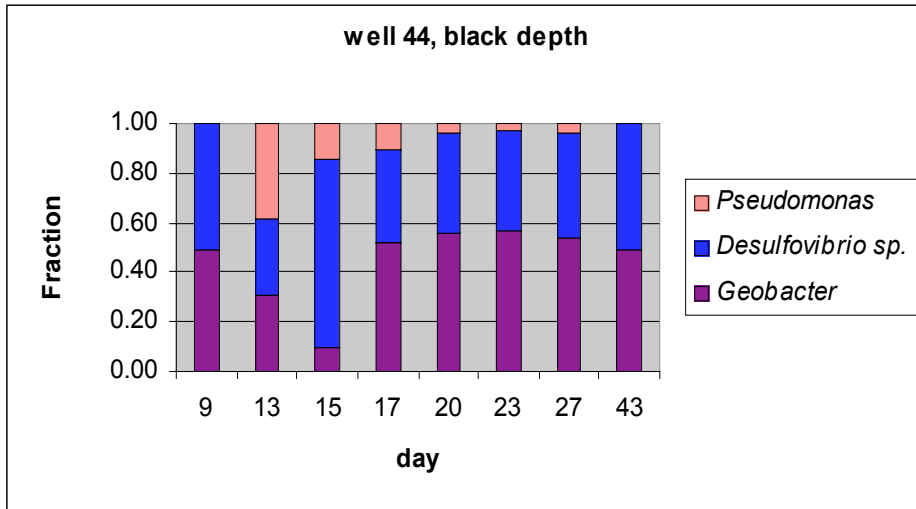
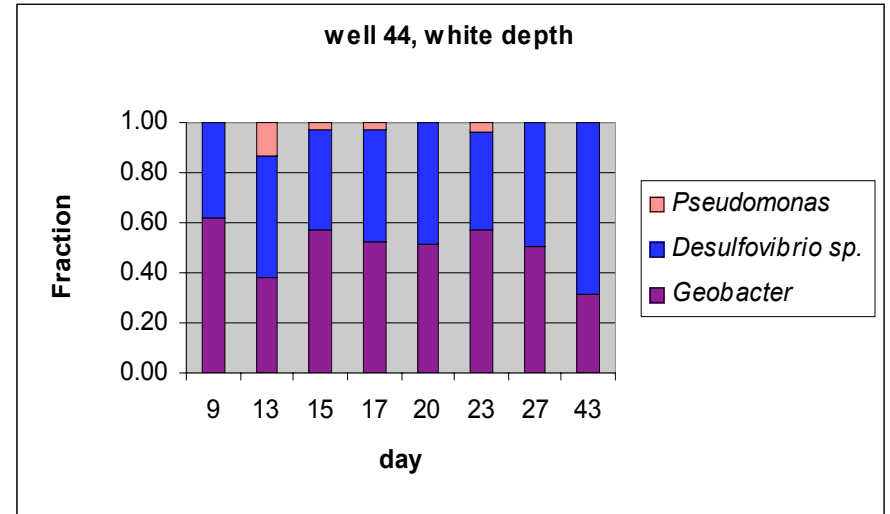
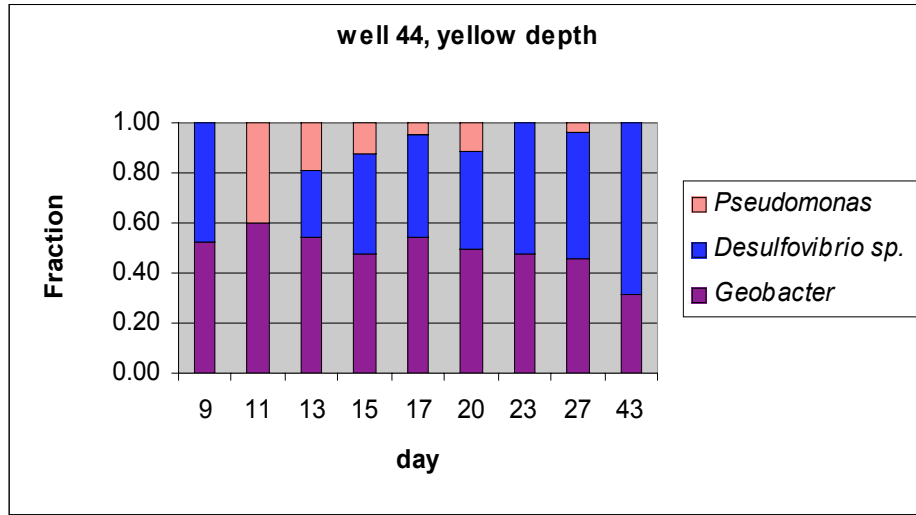
Acridine orange direct counts: Monitoring well - 44



PLFA biomass estimates



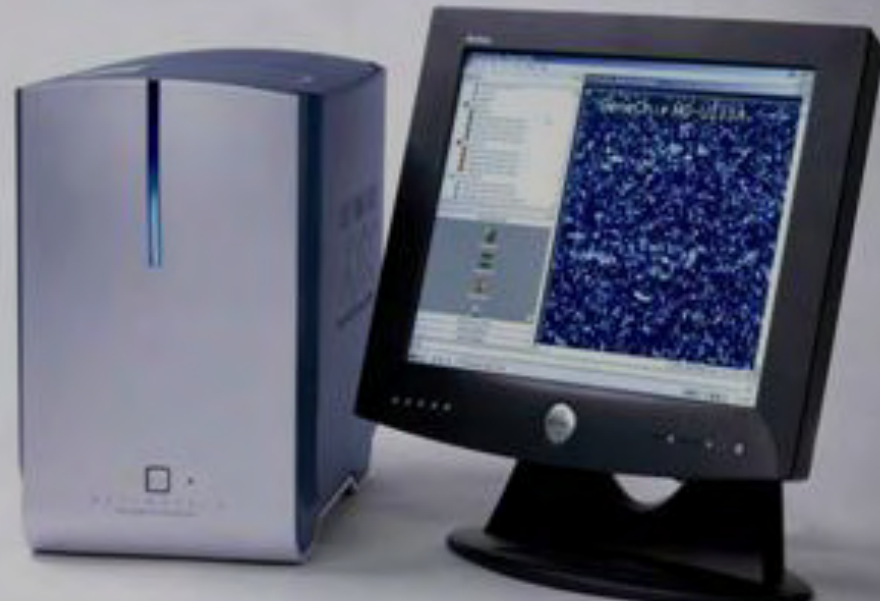
PLFA: Selected Biomarkers



DOE 16s rDNA microarray

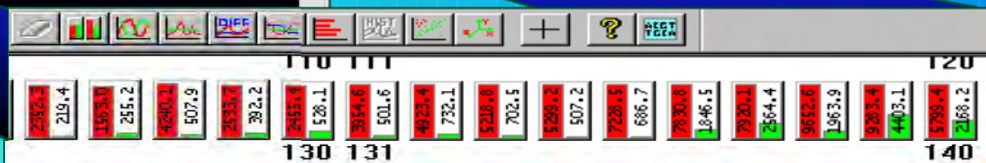
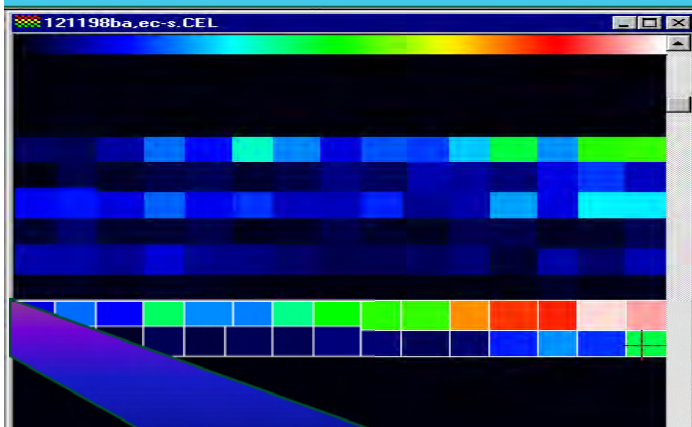


- Rapidly detect the composition and diversity of microbes in an environmental sample
- Massive parallelism - 550,000 probes in a 1.28 cm² array
- all 9,900 species in 16S rDNA database
- Single nucleotide mismatch resolution



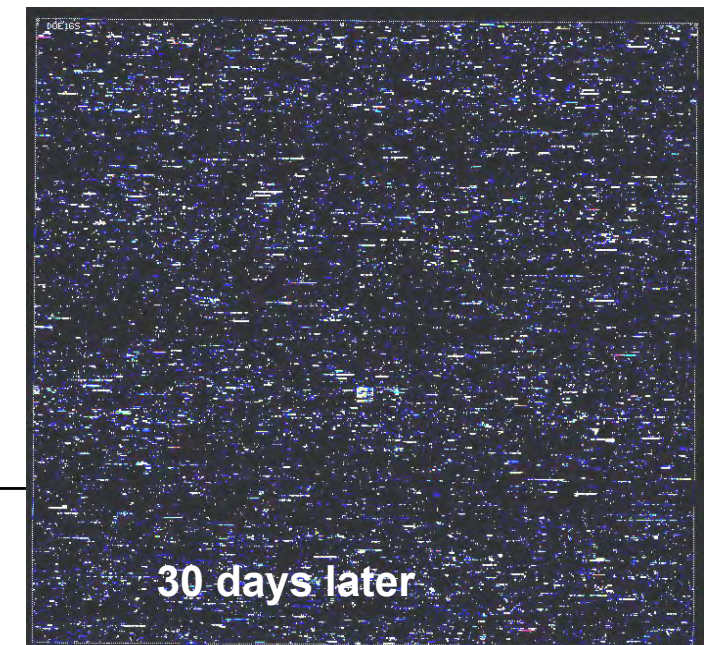
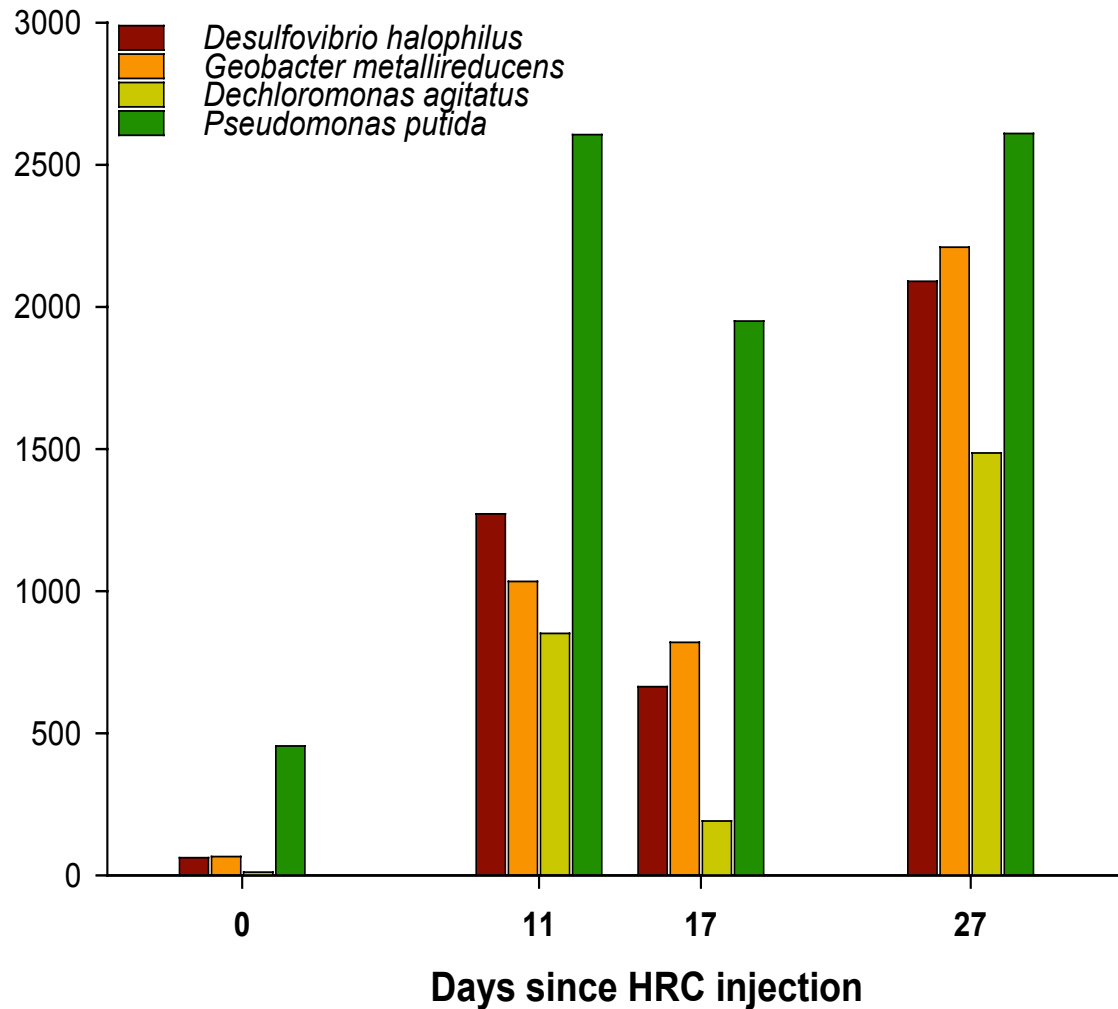
cctagcatgCattctgcata
cctagcatgGattctgcata

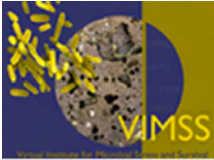
MATCH
MISMATCH



Microarray analysis of bacterial community changes during Cr(VI) remediation at Hanford 100H site:

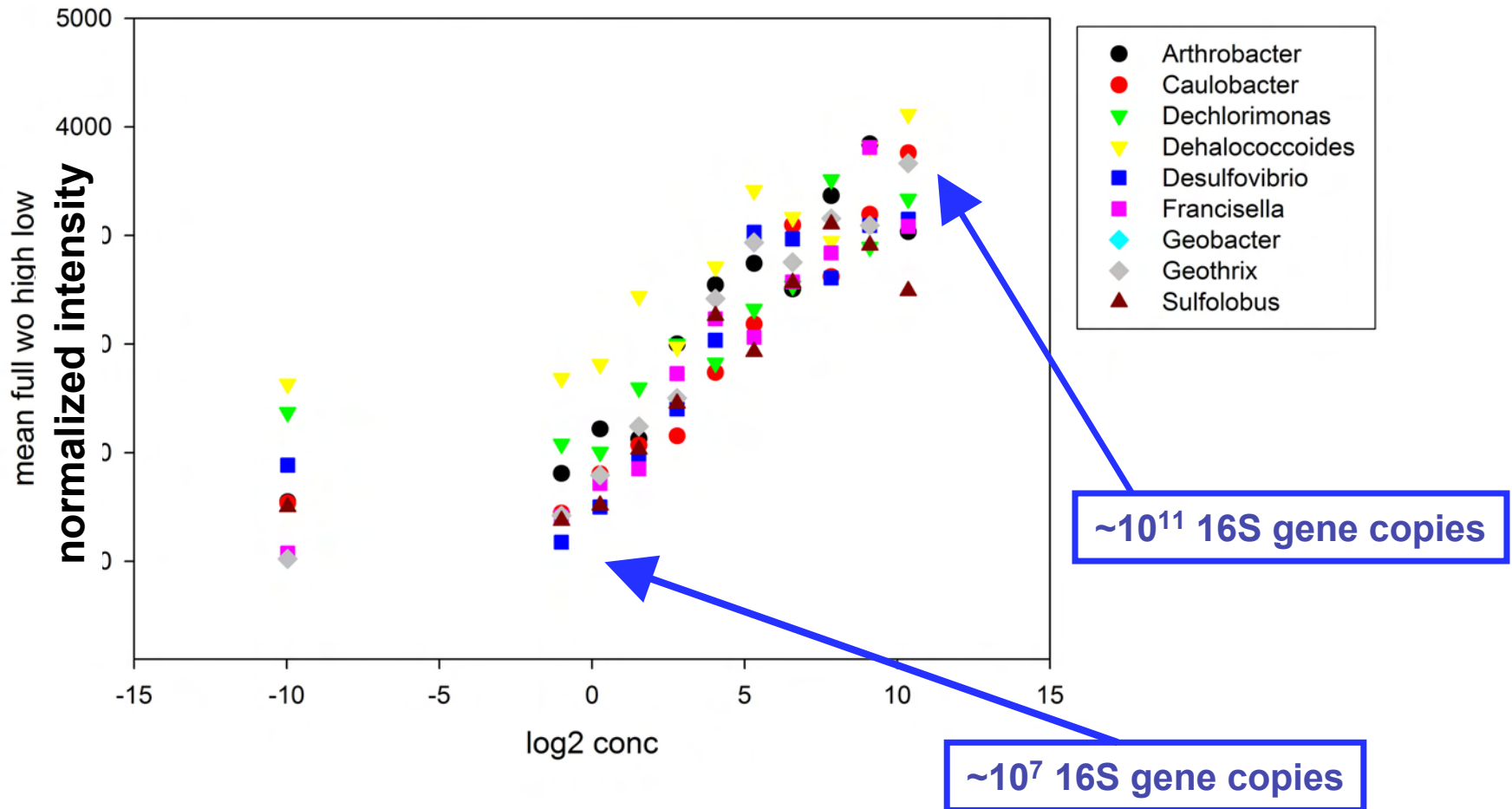
Dynamics of some significant organisms.





16S Microarray is Quantitative: when comparing same OTU over time/treatment

G2 Latin Squares



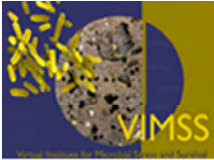
16S rDNA GeneChip

■ Archaea

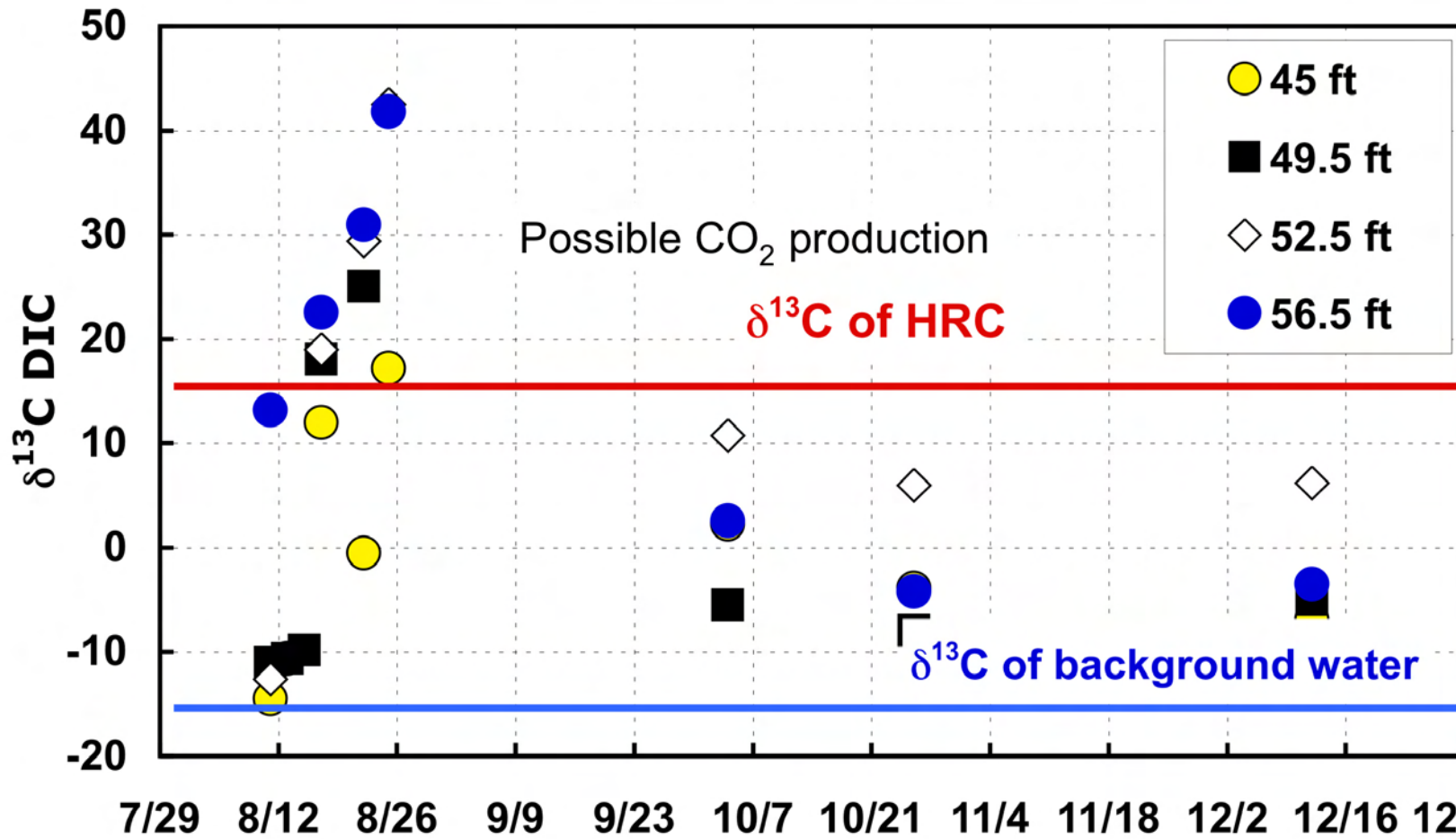
- Only Crenarchaeotes (non-thermophilic) detected
 - Dominated by one type – no cultured relative.

■ Bacteria

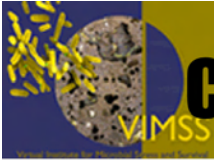
- Initial enrichment of denitrifiers
 - *Fulvimonas*, *Pseudomonas*, *Hyphomicrobium*,
Acidovorax, *Aquaspirillum*, *Thauera*, *Azoarcus*,
Comamonas, *Dechloromonas*, *Clostridium*.
 - Followed by enrichment of sulfate reducer(s)
-



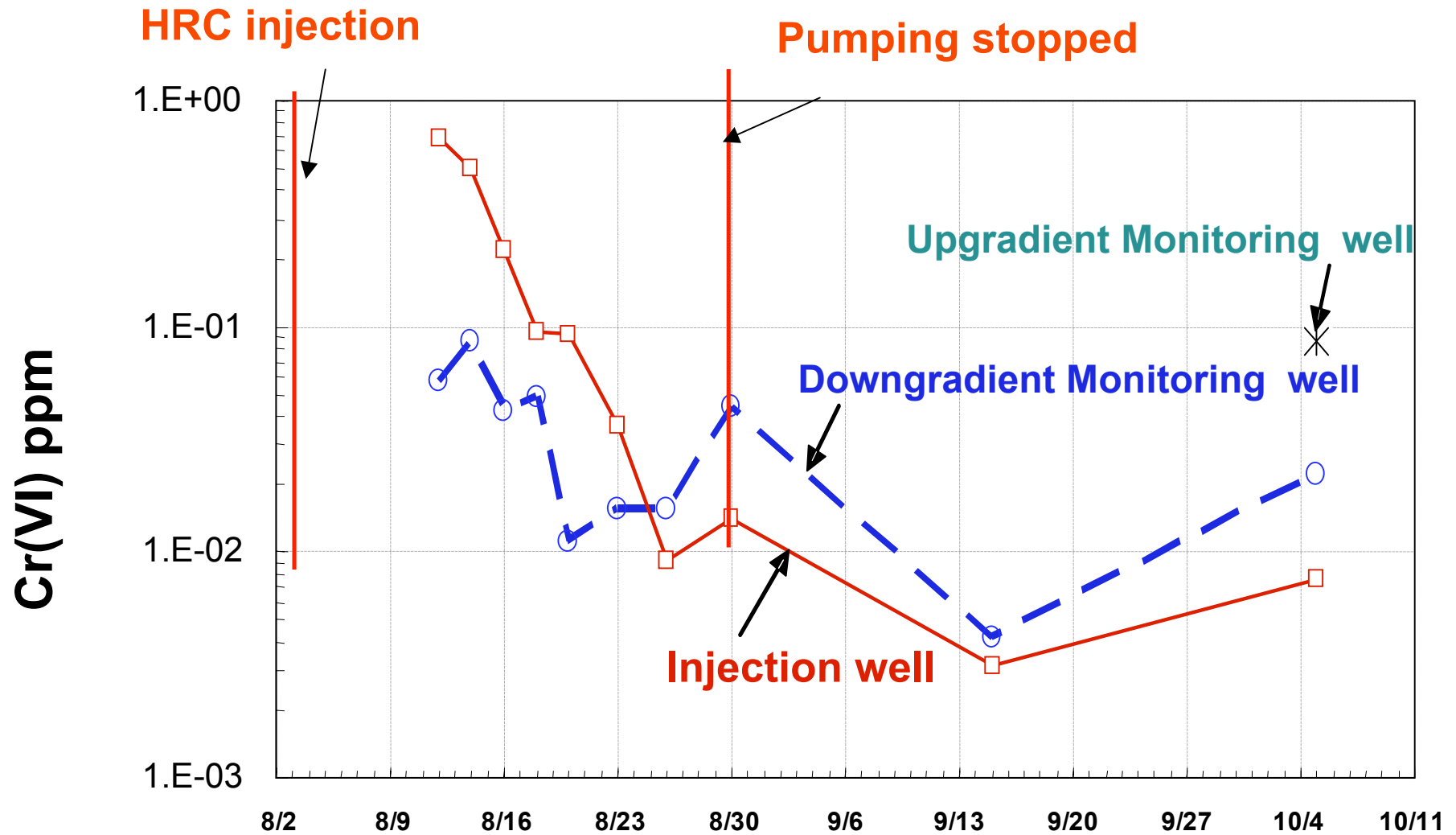
Biogeochemical Evidence of Microbial Metabolism in Groundwater

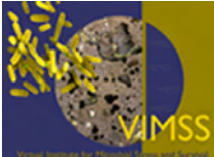


$\delta^{13}\text{C}$ of Dissolved Inorganic Carbon is Byproduct of HRC Metabolism



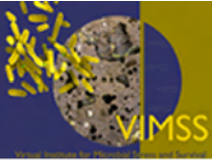
Changes in Cr(VI) Concentrations after the HRC Injection





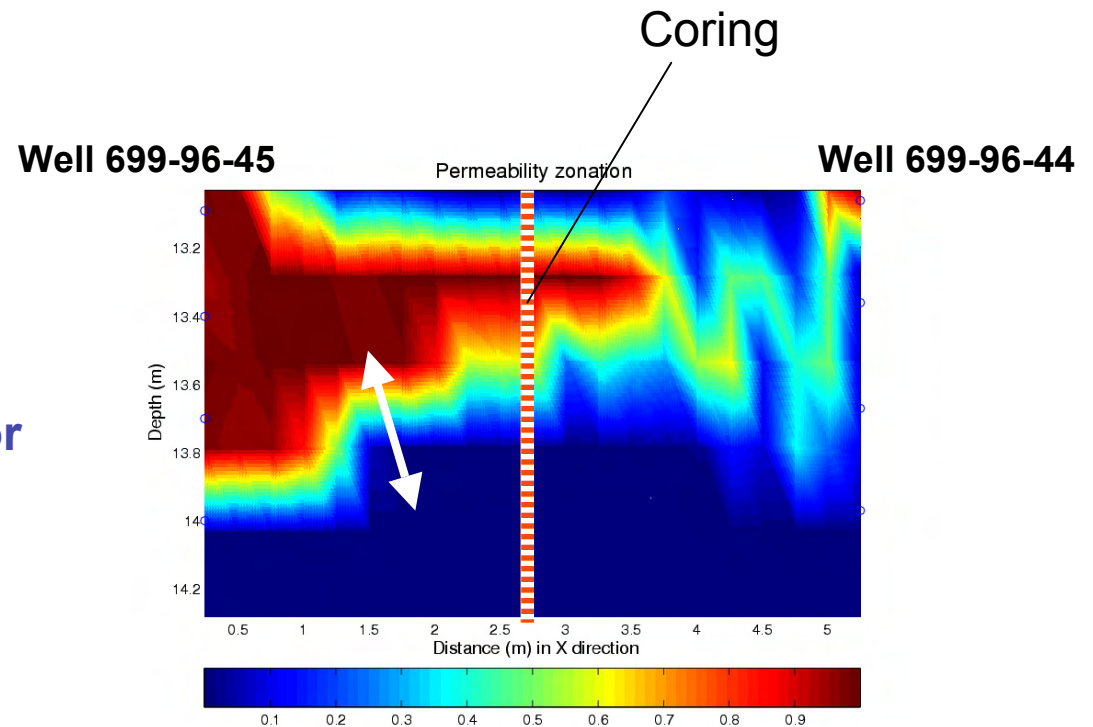
Conclusions

1. Bacteria in Hanford groundwater is low but includes *Arthrobacter*, *Oxalobacter*, *Sporomusa* and *Pseudomonas* species. Under background conditions, the total microbial population is $<10^5$ cells g^{-1} .
2. Lactate increases biomass to $>10^8$ cells g^{-1} , generates highly reducing conditions, and enhances Cr(VI) removal from the pore solution.
3. Bacteria densities and diversity continued to increase for the first 6 weeks, followed by a decrease in the microbial diversity and density after 3 months.
4. DO dropped from 8.2 to 0.35 mg/l, redox potential from 240 to -130 mV, and pH from 8.9 to 6.5, followed by reduction of nitrate to non detect, and finally sulfate reduction. DO and nitrate began to return to background concentrations two months after HRC injection, despite ground water bacterial densities remaining high ($>10^7$ cells/ml).
5. Geophysical investigations show that HRC products (such as lactic acids) injected into groundwater can be detected using radar and seismic survey, and that even small variations in hydrogeological heterogeneity may influence the distribution of the amendment and its products.
6. $\delta^{13}C$ ratios in dissolved inorganic carbon confirmed microbial metabolism of HRC. $\delta^{13}C$ ratios remain above background values after 6 months. Increases in carbon isotope ratios of DIC in Well 44 are coincident with increases in bromide, chloride and acetate and decreases in nitrate. The source of chloride is likely from the HRC.
7. Hydrogen sulfide production was first observed after about 20 days post-injection, which corresponds with the enrichment of a *Desulfovibrio* species (sulfate reducer) identified using 16S rDNA microarray and monitored by direct fluorescent antibodies.
8. Cr(VI) concentrations in the monitoring and pumping wells decreased significantly and remained below up-gradient concentrations even after 6 months, when redox conditions and microbial densities had returned to background levels.



Future Research

- Mass transfer between high and low permeability zones
- Changes in hydraulic properties of sediments after HRC injection
- Evaluation of the potential for Cr(III) reoxidation
- Development of a numerical code TOUGH Bio-React
- Monitoring and new field tests



Dr. Terry C. Hazen tchazen@lbl.gov

Hanford 100H Chromium Project

<http://www-esd.lbl.gov/ERT/hanford100h/>

Center for Environmental Biotechnology

<http://www-esd.lbl.gov/CEB>

Environmental Remediation Technology Program

<http://www-esd.lbl.gov/ERT>

Ecology Department

<http://www-esd.lbl.gov/ECO>

DOE Natural and Accelerated Bioremediation Research Program

<http://www.lbl.gov/NABIR>