

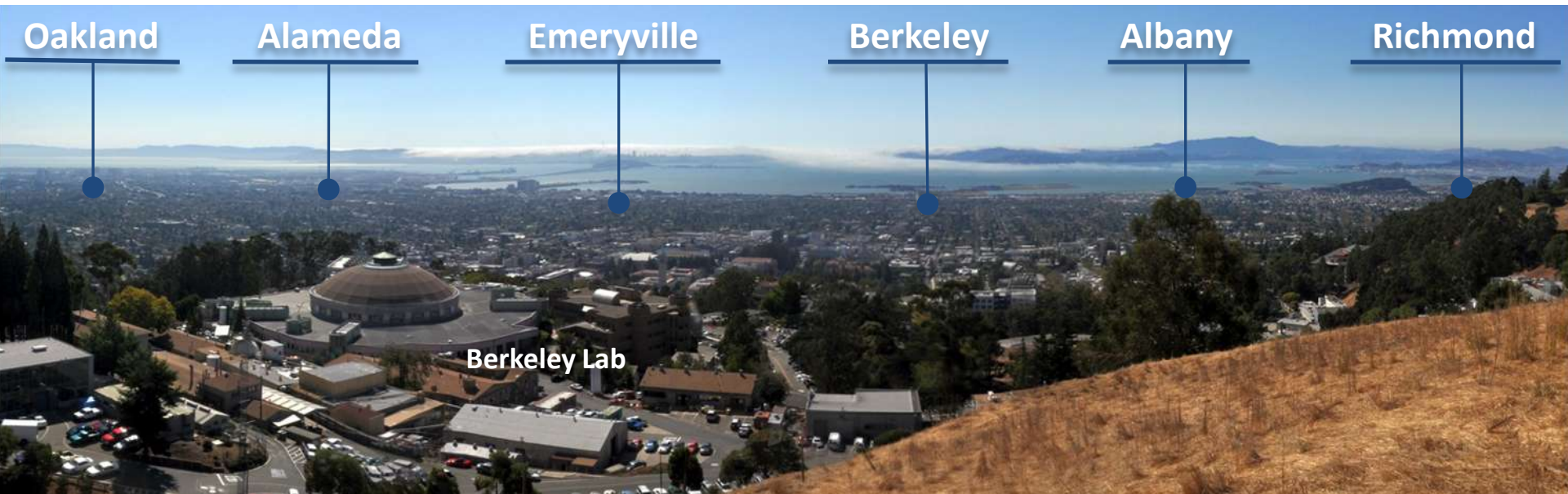


BERKELEY LAB / SECOND CAMPUS

**Horst Simon
Deputy Director**

**Presentation to the Community Advisory Group
September 22, 2011**

Second Campus



Topics

- Current Status
- Sites Under Evaluation
- Path Forward

Strategic Need for a Second Campus

Goal: Consolidate programs from leased facilities and provide space for future growth at a site in the East Bay.

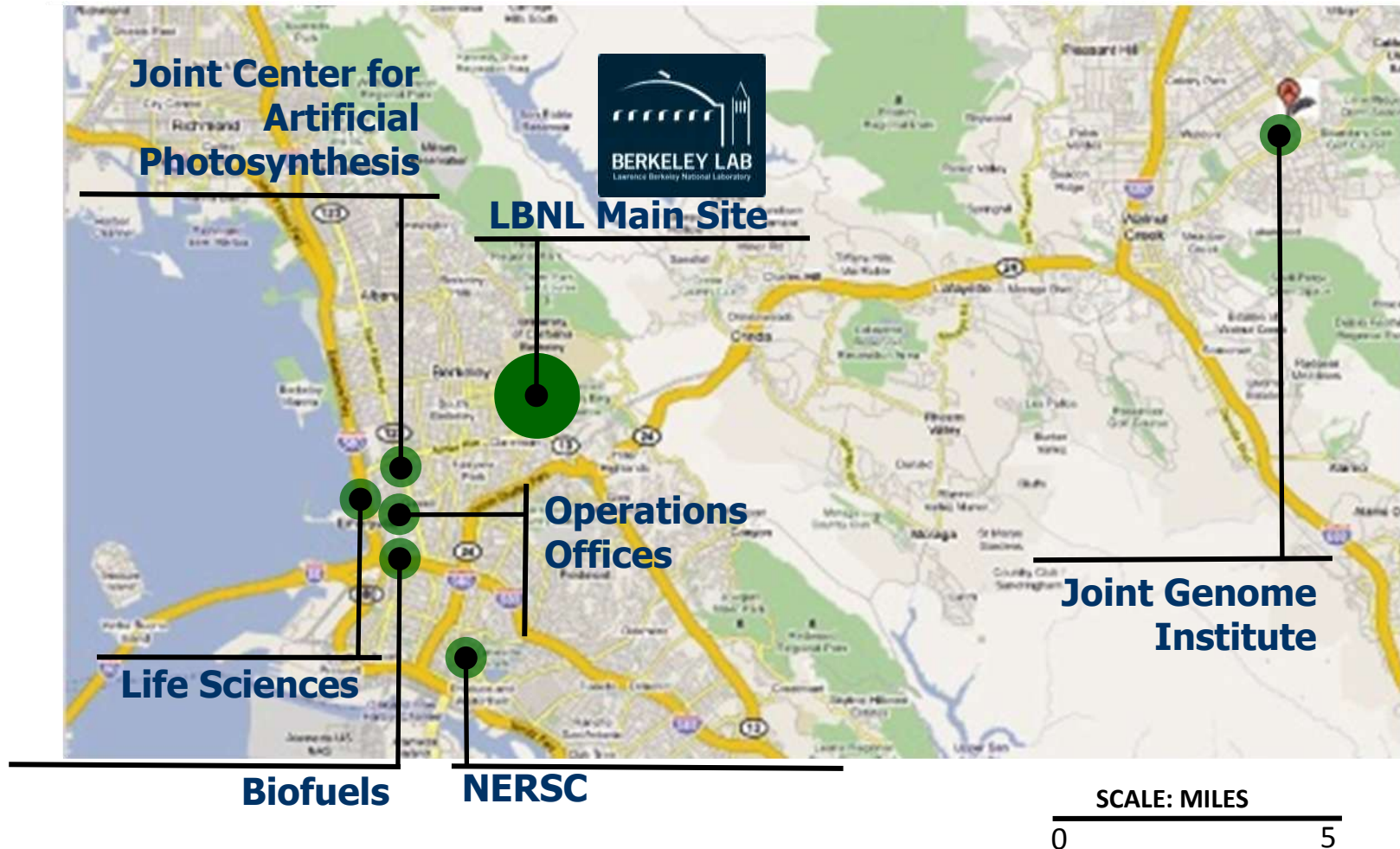
Enables Berkeley Lab to :

- Control facility and site costs over the long term
- Reduce operations costs with fewer sites to support
- Better address more DOE research opportunities and mission
- Allow for future expansion and eventual freeing up of space at main site
- Manage space for existing and developing programs more strategically
- Increase cross-cutting collaborative research

Nevertheless, we will not go forward if conditions are such that it is not in the best interest of either the U.S. or UC



Approximately 25% of Lab Facilities are Offsite



Starting point for Second Campus: Consolidation of existing biosciences programs from leased space



BIOFUELS
Emeryville
(~110,000 GSF)



LIFE SCIENCES
West Berkeley
(~140,000 GSF)



JOINT GENOME INSTITUTE
Walnut Creek
(~100,000 GSF)

Total Gross Square Feet about 350,000 without consolidation efficiencies

- Further total space reductions anticipated as programming to budget continues

Community Support for the Berkeley Lab Second Campus

“I enjoyed the Lab’s presentation...but you had us at hello.”

- John Russo, City Manager, Alameda

“My money is on the City of Richmond.”

- Congressman George Miller

“In addition to being a welcoming community...Oakland is great place for recruitment of the best and brightest.”

- Tim Westergren, founder of Pandora

“We know we can work with neighboring communities to make the sites work.”

- Mayor Tom Bates, Berkeley

“If the Lab wants to build a beautiful, sustainable campus in a city that is willing to start tomorrow, they will have chosen the right place.”

- Mayor Nora Davis, Emeryville



Widespread Second Campus Coverage Generated Support for Berkeley Lab



Interest in the Berkeley Lab Second Campus is high... attendance at the Second Campus community meetings has ranged from 75 – 500 community members.

Members of Congress, State legislators, local elected officials have all issued statements supporting sites.

Second Campus process has transformed the Berkeley Lab relationship with the East Bay community

Newspapers: Wall Street Journal, the San Francisco Chronicle, regional newspapers

Radio: PBS/KQED, local radio stations

Television: Coverage on CBS and other Bay Area wide TV Stations

The Web: Websites and blogs that feature local coverage

San Francisco Chronicle

Lawrence Berkeley Lab Courted by East Bay Cities
August 2, 2011

THE WALL STREET JOURNAL.

Alameda Maneuvers for Coveted Lab

After years of failed attempts at redevelopment of former Naval Air base, city puts forth vision for high-tech campus.

July 21, 2011



Lawrence Berkeley Lab Mulls Second, Oakland Location
July 27, 2011

- **The Second Campus allows us to reinvent national labs for the 21st Century**
 - **Integration with commercial development and private sector**
 - **Open access and integration with the community**
 - **Sustainability by design**
 - **Best business practice operational models**

The Second Campus

- **Harnesses the biosciences revolution for DOE**
- **Enables future programs / projects for DOE**
- **Provides long-term cost savings for DOE**
- **Is affordable**
- **Can be a model for the 21st Century national laboratory**

Second Campus Sites Under Evaluation



Richmond Field Station

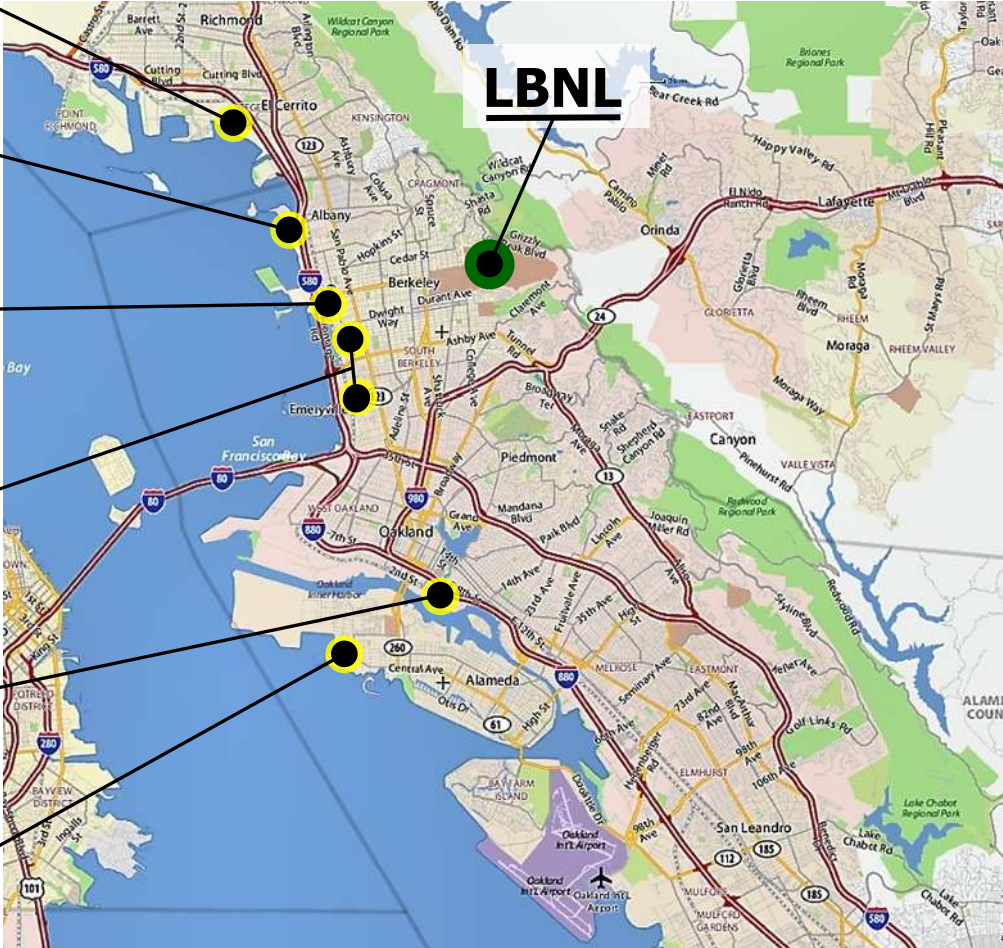
Albany/Berkeley
Golden Gate Fields

Berkeley Aquatic Park West

Berkeley Aquatic Park
Emeryville Emery Station

Oakland Brooklyn Basin

Alameda Point



Progress to Date



- Reduced from original 22 site submissions to 6
- Received massing studies that were analyzed for applicability and feedback provided
- Received conceptual proposals from each of 6 sites
- Sought community input from each of the 6 sites
- Nearing completion of detailed due diligence studies at each of 6 sites
- Established optimized **initial** programming phase based on affordability analysis
- Requested additional specific information from each site and development team
- Requested each site development team to respond to optimized first phase programming priorities

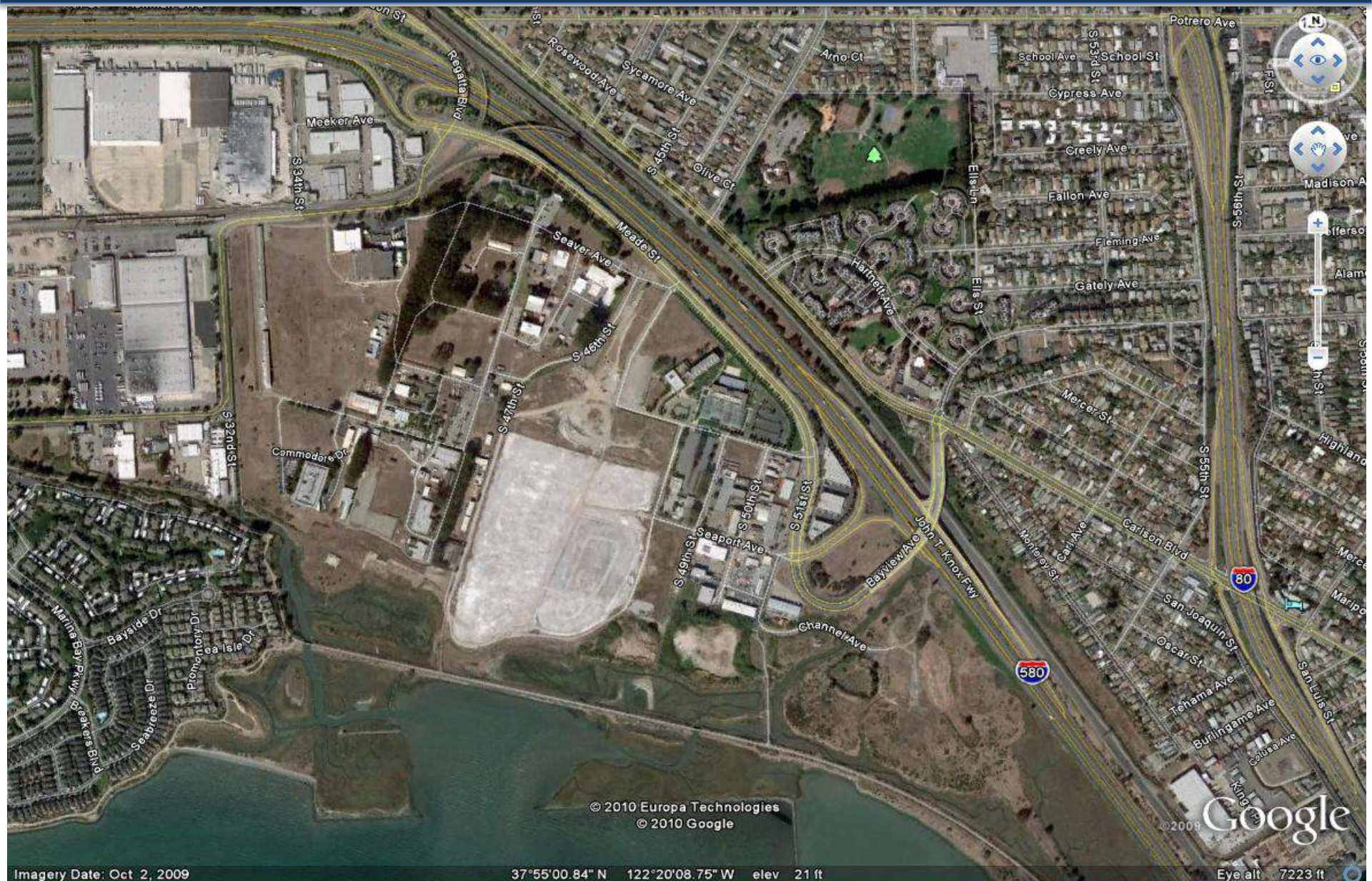
Detailed Due Diligence Studies



Detailed studies are being and have been conducted in the evaluation of each sites these studies include:

- Traffic
- Environmental conditions
- Ecological and wildlife
- Community and neighborhood
- Geotechnical
- Vibration
- Electromagnetic interference
- Design and Constructability
- Utilities and Power
- Infrastructure Requirements
- Economic
- Planning
- Collaboration / research synergy viability
- Sustainability capabilities of each site and development team

Richmond Field Station



© 2010 Europa Technologies
© 2010 Google

© 2009 Google

Imagery Date: Oct 2, 2009

37°55'00.84" N 122°20'08.75" W elev 21 ft

Eye alt 7223 ft

Richmond Field Station

Present



Richmond Field Station

Phase 1

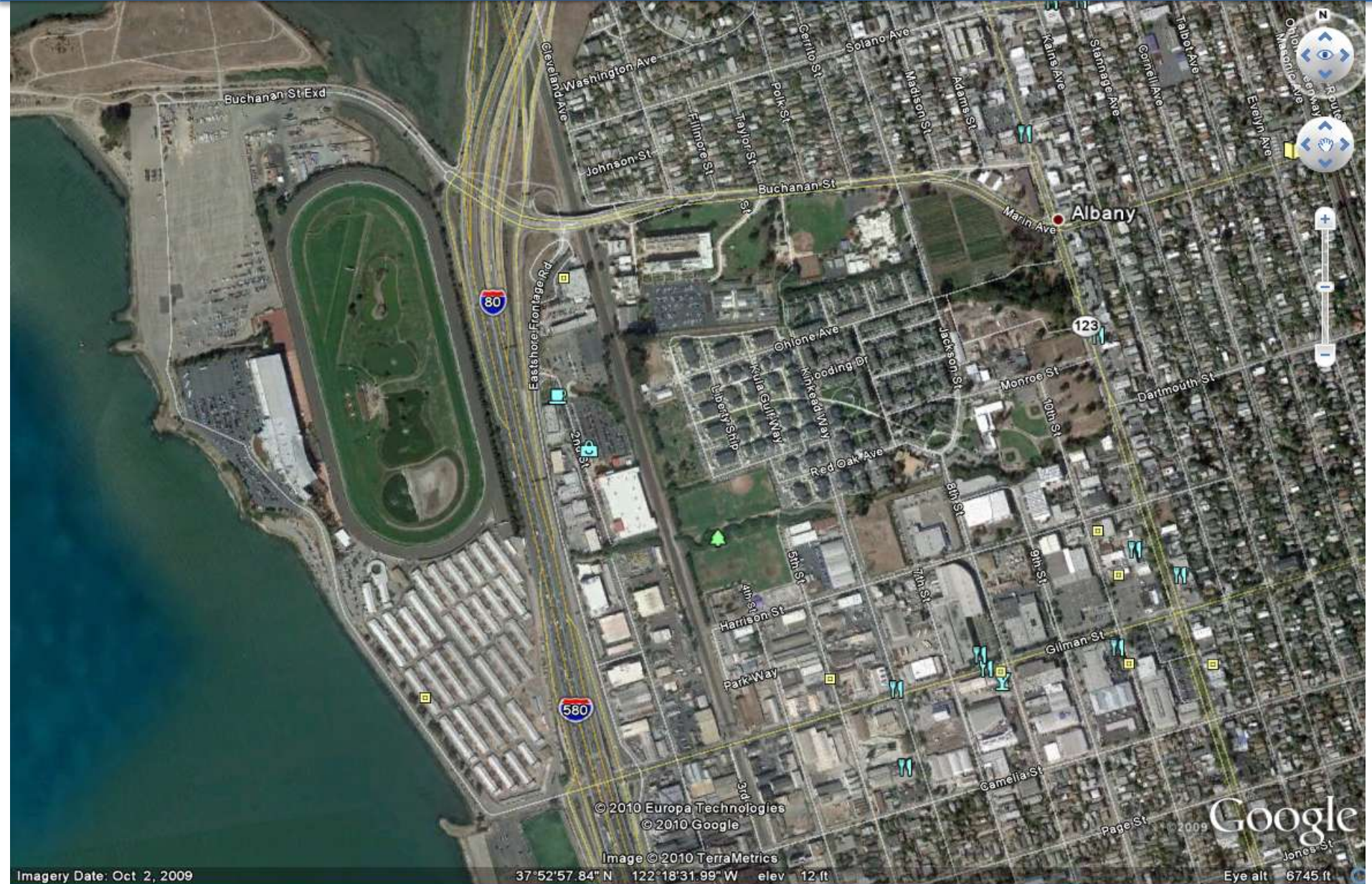


Richmond Field Station

Full Buildout



Golden Gate Fields



© 2010 Europa Technologies
© 2010 Google

Image © 2010 TerraMetrics

Imagery Date: Oct 2, 2009

37°52'57.84" N 122°18'31.99" W elev 12 ft

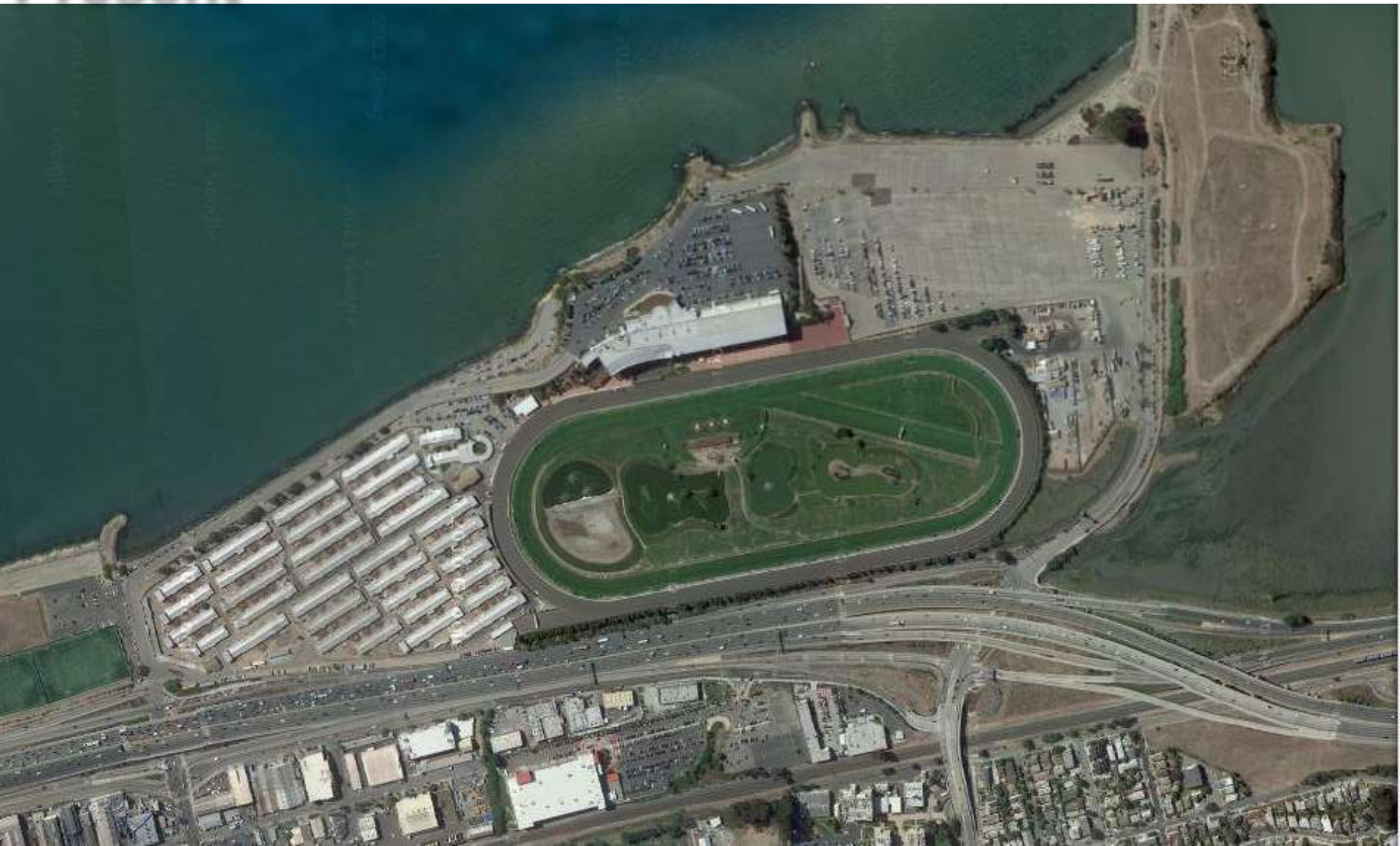
Google

Eye alt 6745 ft

Golden Gate Fields



Present



Golden Gate Fields



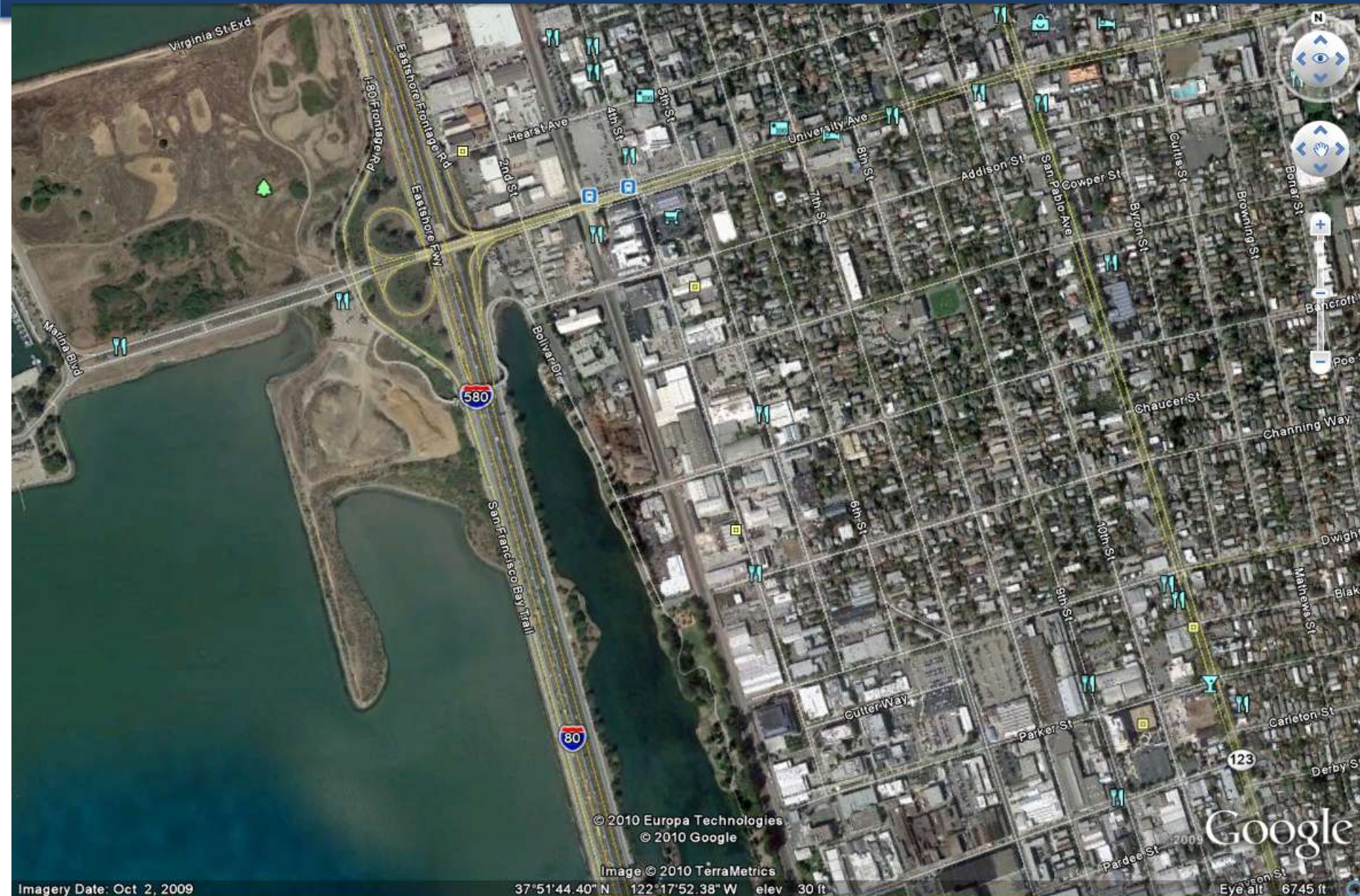
Phase 1



Full Buildout



Aquatic Park West



Imagery Date: Oct 2, 2009

Image © 2010 TerraMetrics
© 2010 Europa Technologies
© 2010 Google
37°51'44.40" N 122°17'52.38" W elev 30 ft

Google
Eye alt 6745 ft

Aquatic Park West

Present



Aquatic Park West

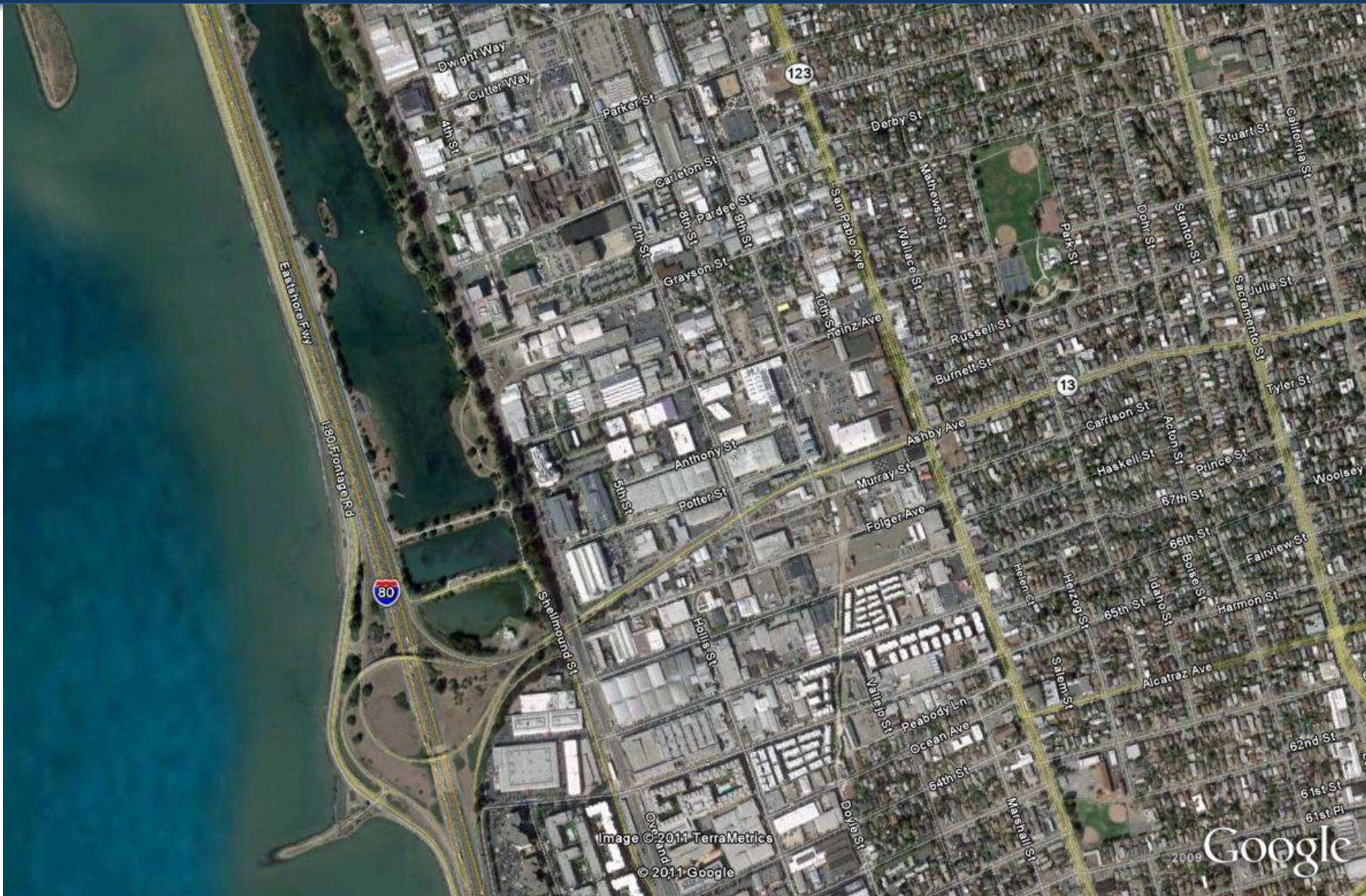
Phase 1



Full Buildout



Aquatic Park Center



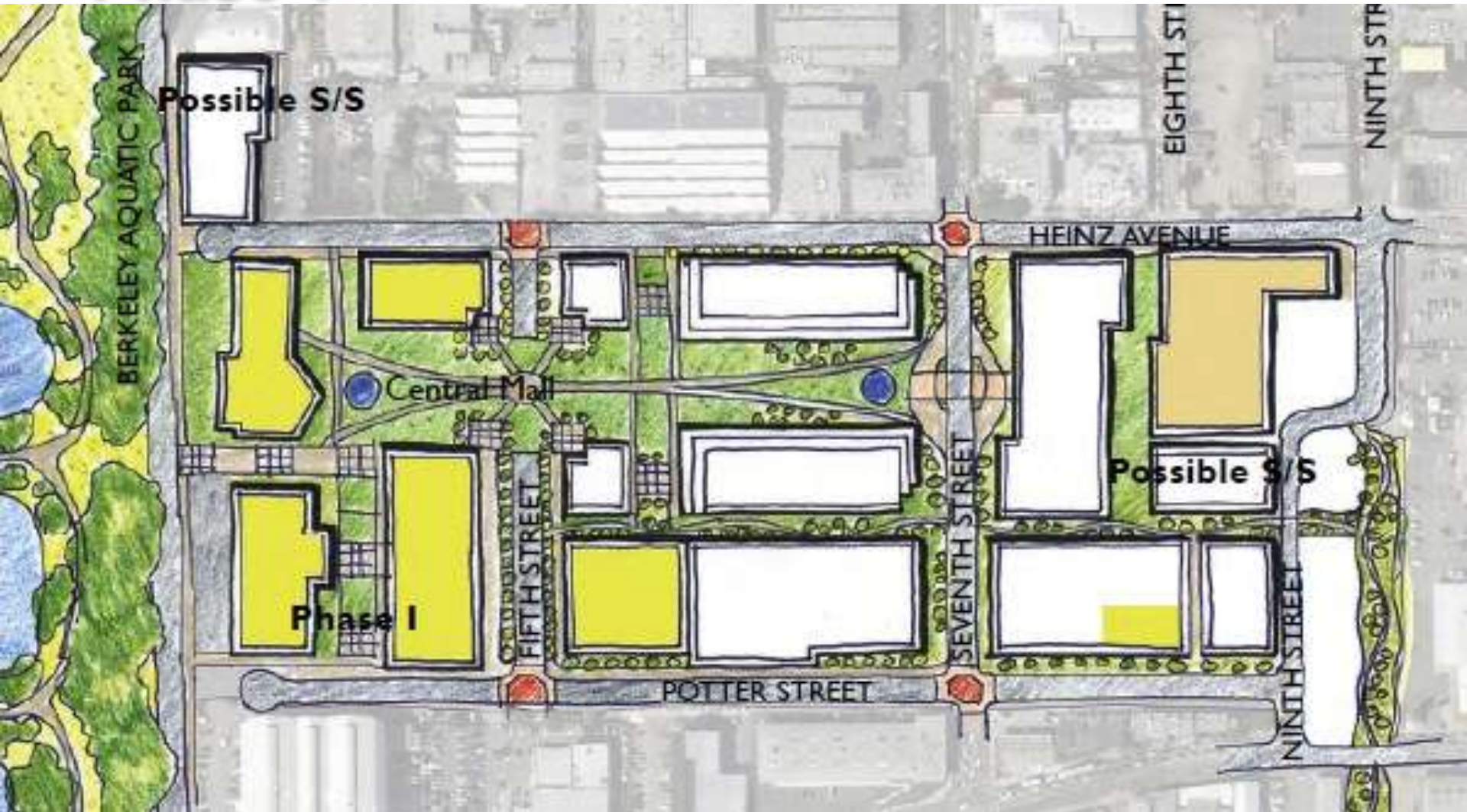
Aquatic Park Center

Present



Aquatic Park Center

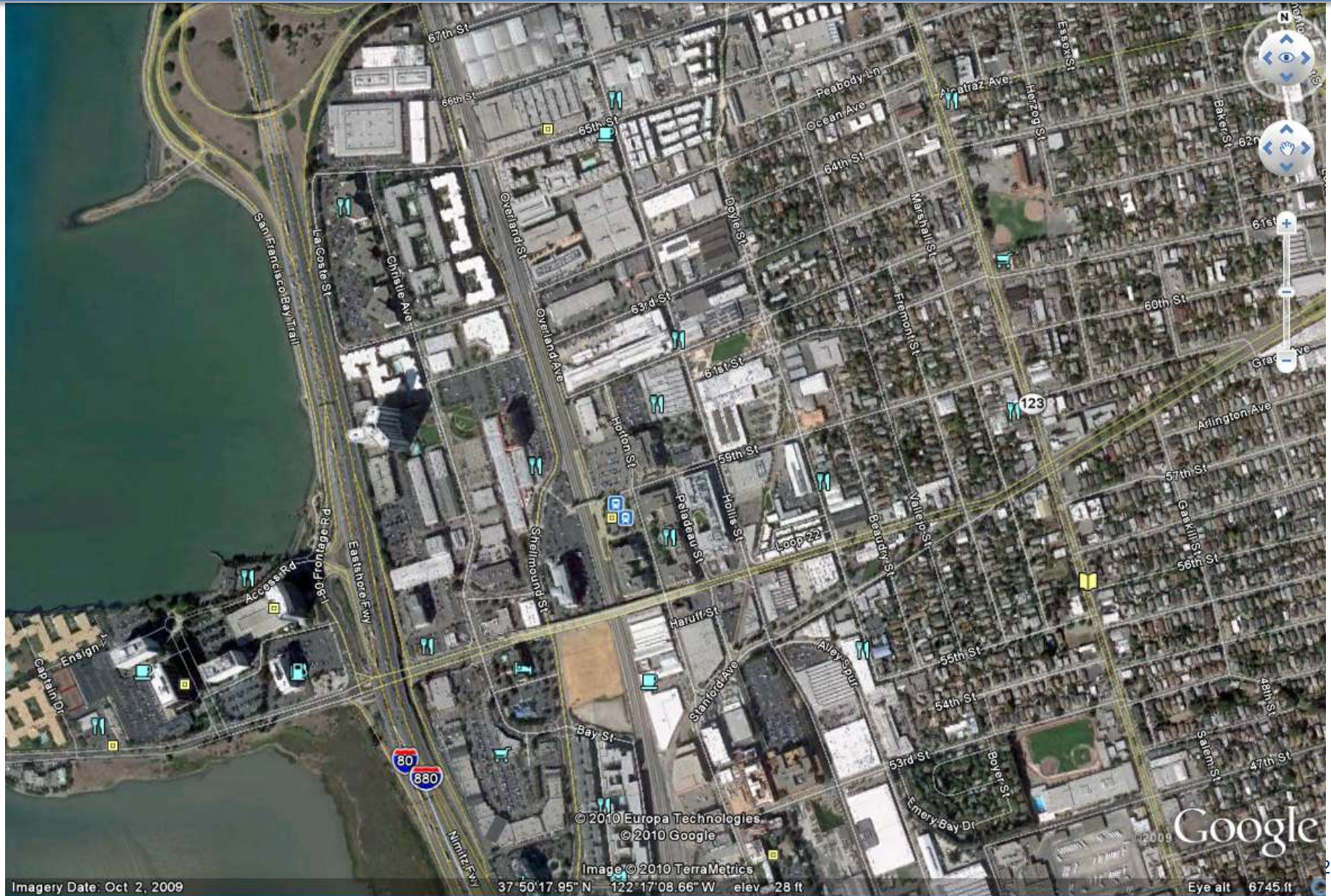
Phase 1



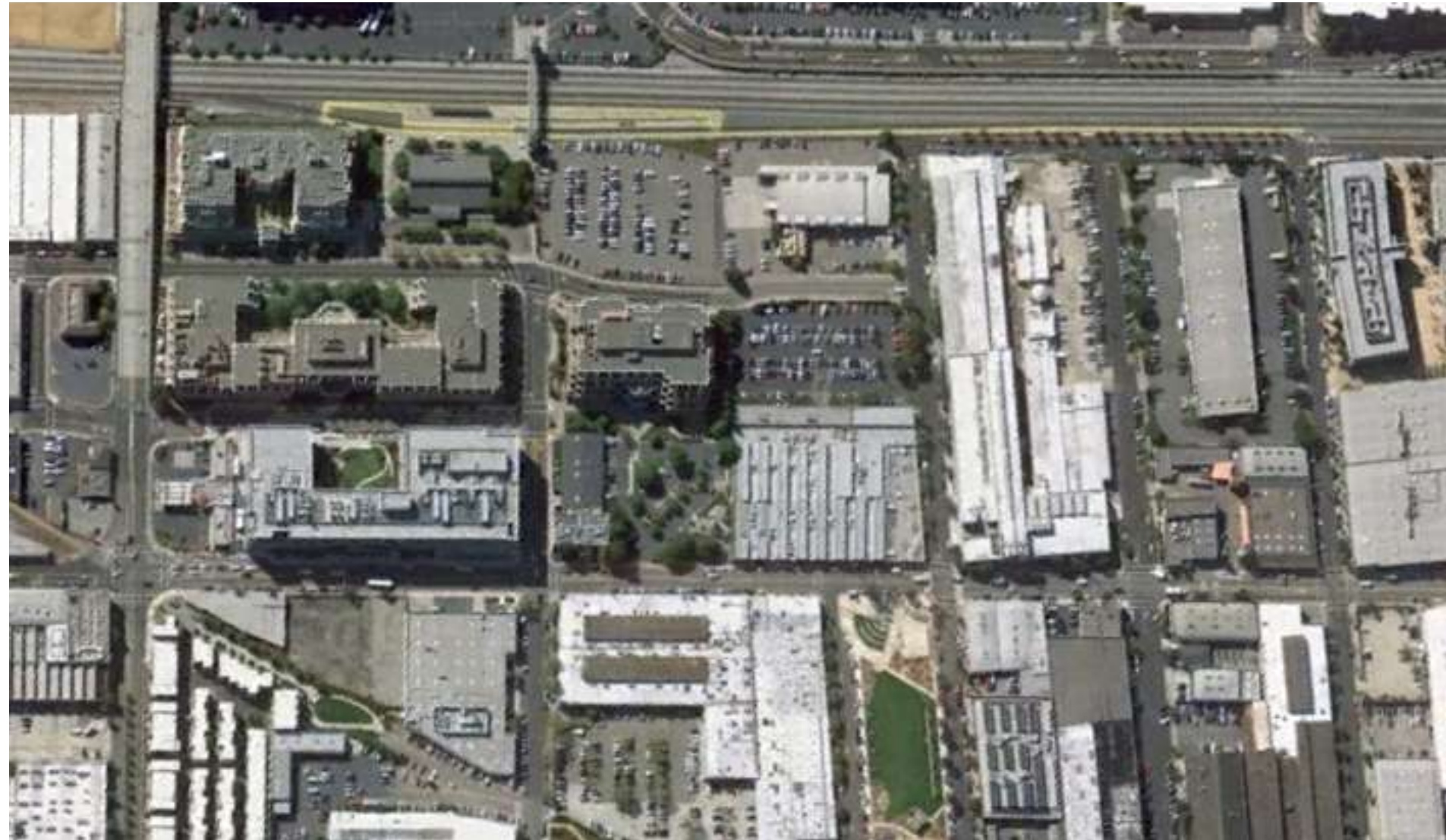
Full Buildout



Emery Station



Present



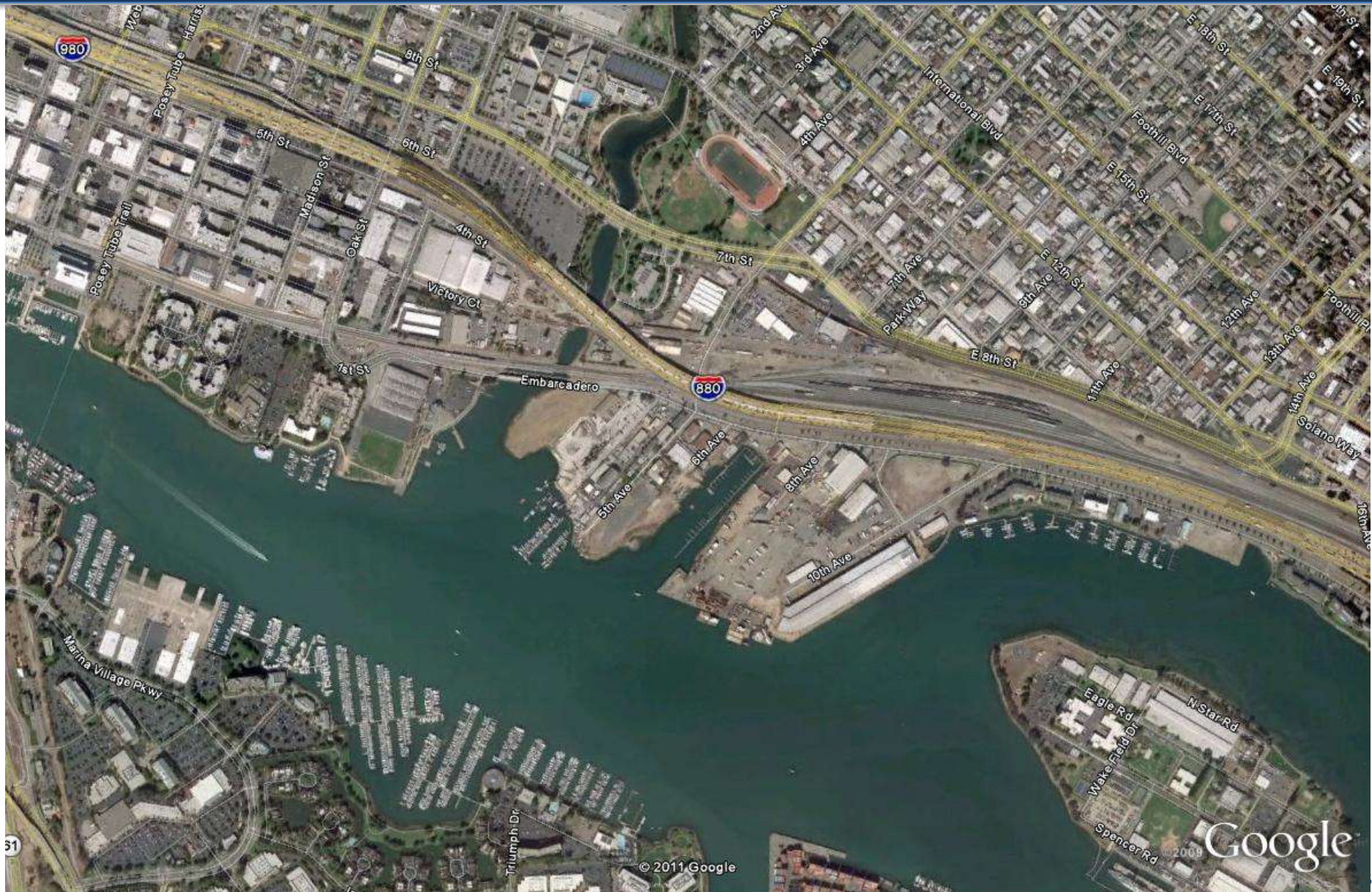
Phase 1



Full Buildout



Brooklyn Basin



Brooklyn Basin

Present



Brooklyn Basin

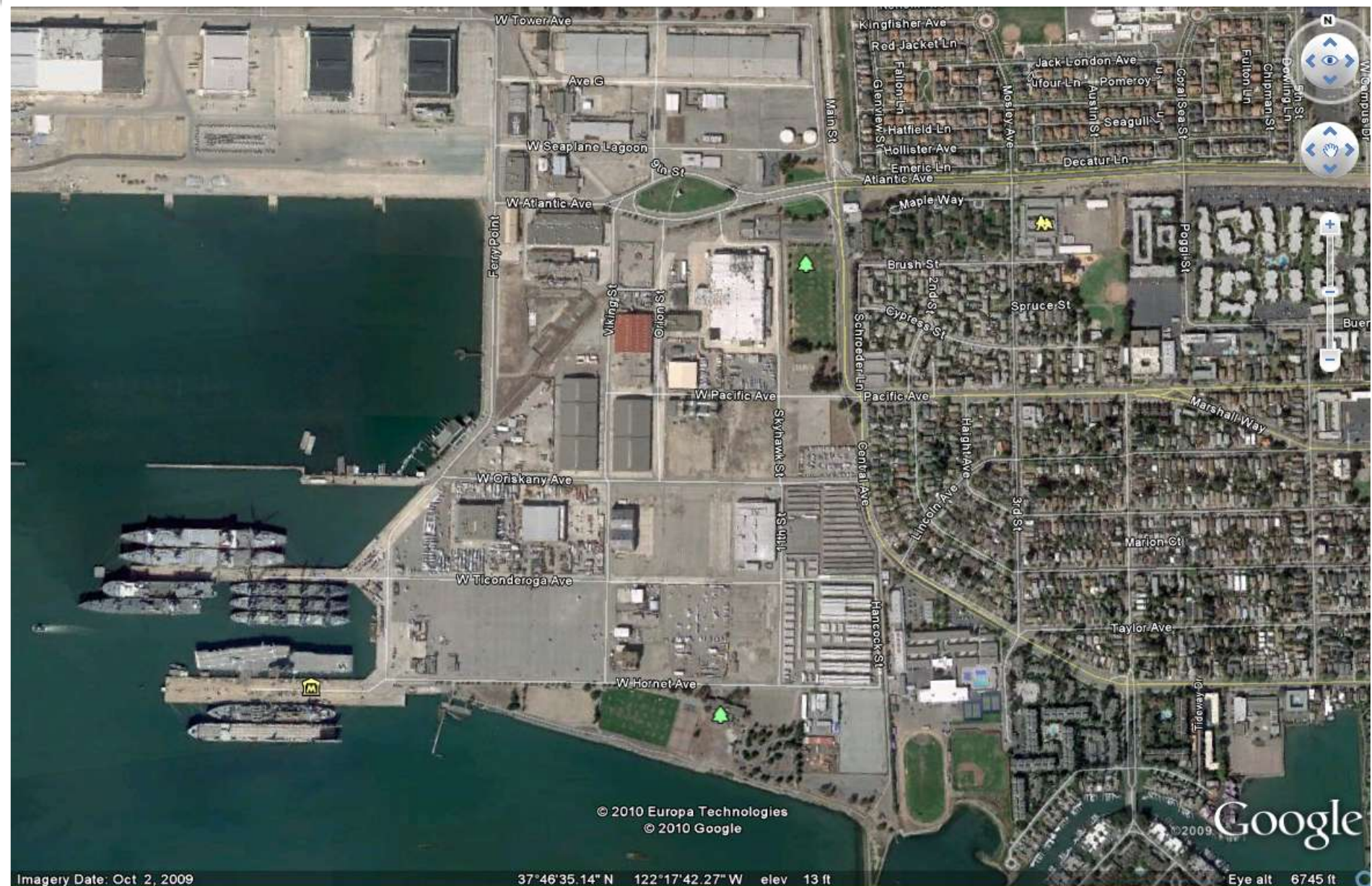
Phase 1



Full Buildout



Alameda Point



© 2010 Europa Technologies
© 2010 Google

Google

Imagery Date: Oct 2, 2009

37°46'35.14" N 122°17'42.27" W elev 13 ft

Eye alt 6745 ft

Present



Phase 1



Full Buildout





Summary Schedule

- Due diligence on short-listed sites
- Announce preferred site – November 2011
- Environmental review – 2012 through 2013
- Construction – 2014 through 2016
- Occupancy – 2016



Questions?