



LBNL & Wildland Fire Fire Protection Program Overview Community Advisory Group September 22, 2011

Gary Piermattei, Fire Marshal

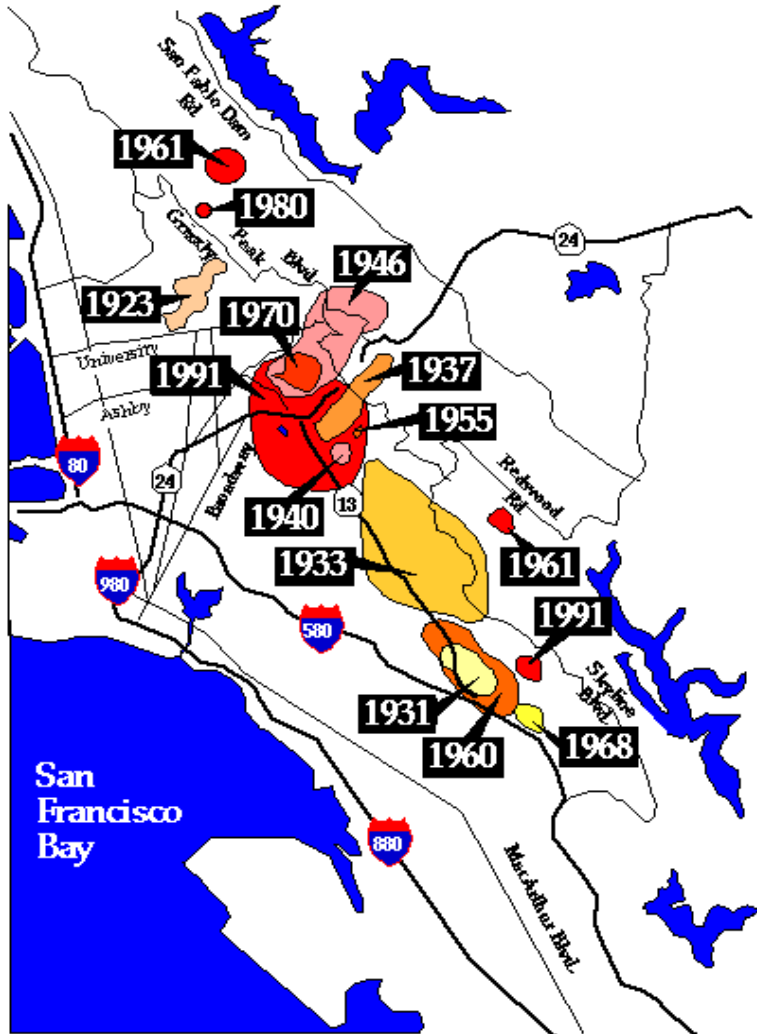
October 1991 “Tunnel” Fire in the Berkeley-Oakland Hills

IMPETUS TO REDUCE THE IMPACT OF WILDLAND FIRE

- The area’s history shows over a dozen major fires since the first documented fire in 1923
- It’s clear that fires keep reoccurring in the same areas in similar weather conditions



Wildland Fires in the East Bay Hills



- 1923 (09) Berkeley/ North UC
- 1929 (06) Oakland/Lake Temescal
- 1931 (11) Leona
- 1933 (11) Redwood/Joaquin Miller
- 1937 (09)Broadway Terrace
- 1940 (09)Broadway Terrace
- 1946 (09)Buckingham/Norfolk
- 1955 (11)Montclair
- 1960 (10)Leona
- 1961 (11)Tilden, Briones, Roberts & Chabot
- 1968 (10)Oak Knoll
- 1970 (09)Buckingham/Norfolk
- 1980 (12)Berkeley/Wildcat
- 1990 (10)Leona
- 1991 (10)Buckingham/Norfolk (Tunnel Fire)

Working With Our Neighbors

HILLS EMERGENCY FORUM

- Cities of Berkeley, Oakland, Richmond, El Cerrito, and Kensington
- East Bay Regional Parks District
- East Bay Municipal Utilities District
- CAL Fire
- University of California, Berkeley Campus
- Lawrence Hall of Science
- Moraga Orinda Fire District
- Lawrence Berkeley National Laboratory

LBNL's Approach

DEFENSIBLE SPACE

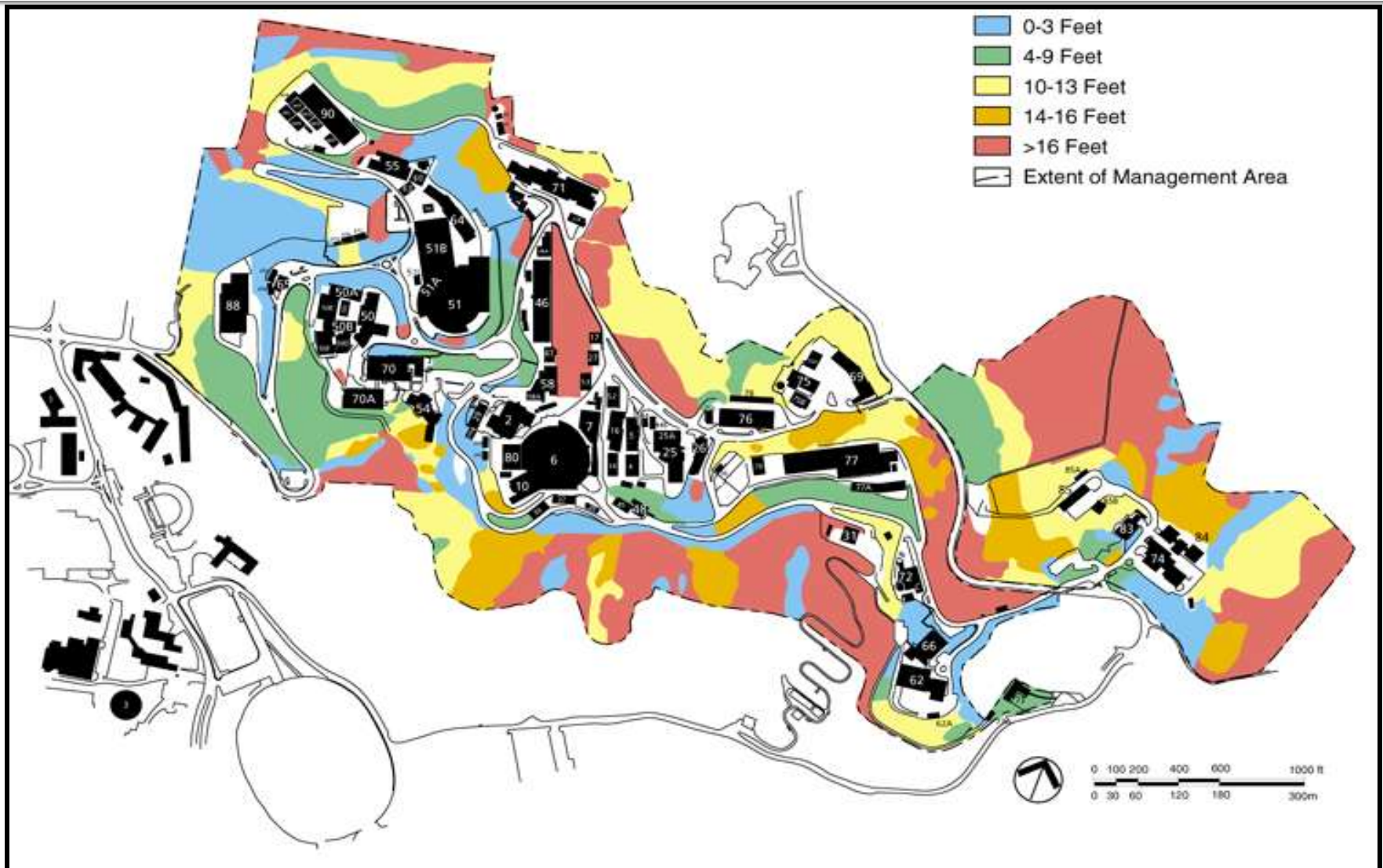
- Using fire modeling developed a tailored approach
- Keep combustible vegetation away from structures
- Maintain ignition resistant structures
- Remove ladder fuels
- Keep grass cut low
- Limb trees up
- Keep flame heights below 6 feet
- Encourage native species

LBNL Mitigation Effort Results

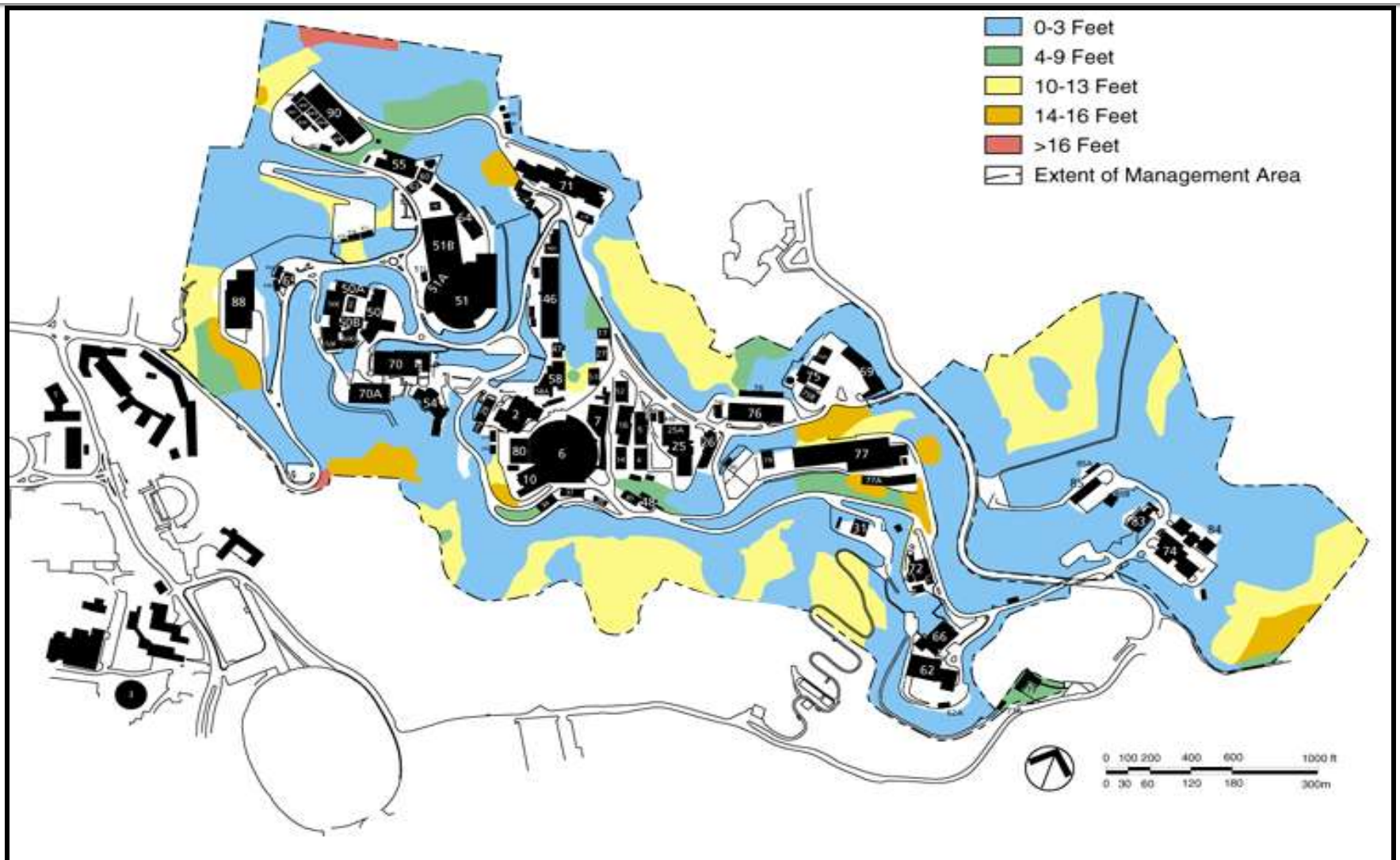
- Significantly reduced combustible vegetation since 1995
- Significantly reduced predicted flame heights so that it is safe for firefighters to fight fires
- Holistic approach to vegetation management
- Continue to control ignition sources
- Improved building resistance
- Enhanced Emergency Planning



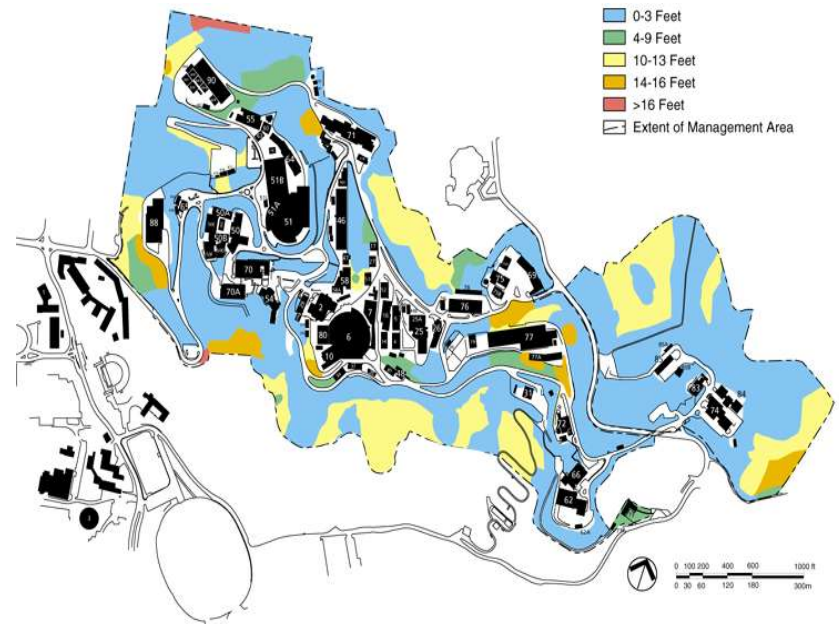
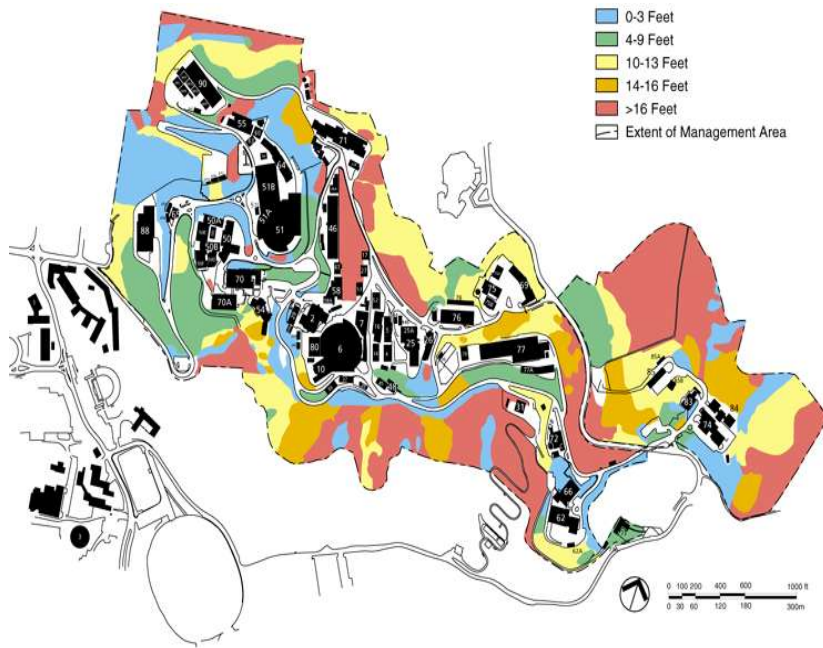
Flame Heights - 1995



Flame Heights - 2010



Flame Heights - 1995 to 2010



Diligent Fire Protection & Prevention Program

- Most buildings are of non-combustible construction
- Over 99% of the area inside buildings is sprinklered
- All buildings and most structures have a fire alarm system
- Rigorous hot work permit program – daily inspections
- Robust water supply
- Work with UC Campus personnel to patrol trails during dry weather



Robust Water Supply

- Two inlets from two separate East Bay Municipal Utilities District reservoirs
- Primary source is 12-inch main, secondary is 8-inch main
- Three 200,000 gallon storage tanks
- Over 70 hydrants on site



Fire Suppression Personnel



Alameda County Fire Department

Captain (1)



Firefighters (3)

Captain and 3 Firefighters are all EMTs: 3 Hazmat Specialists and 1 Paramedic

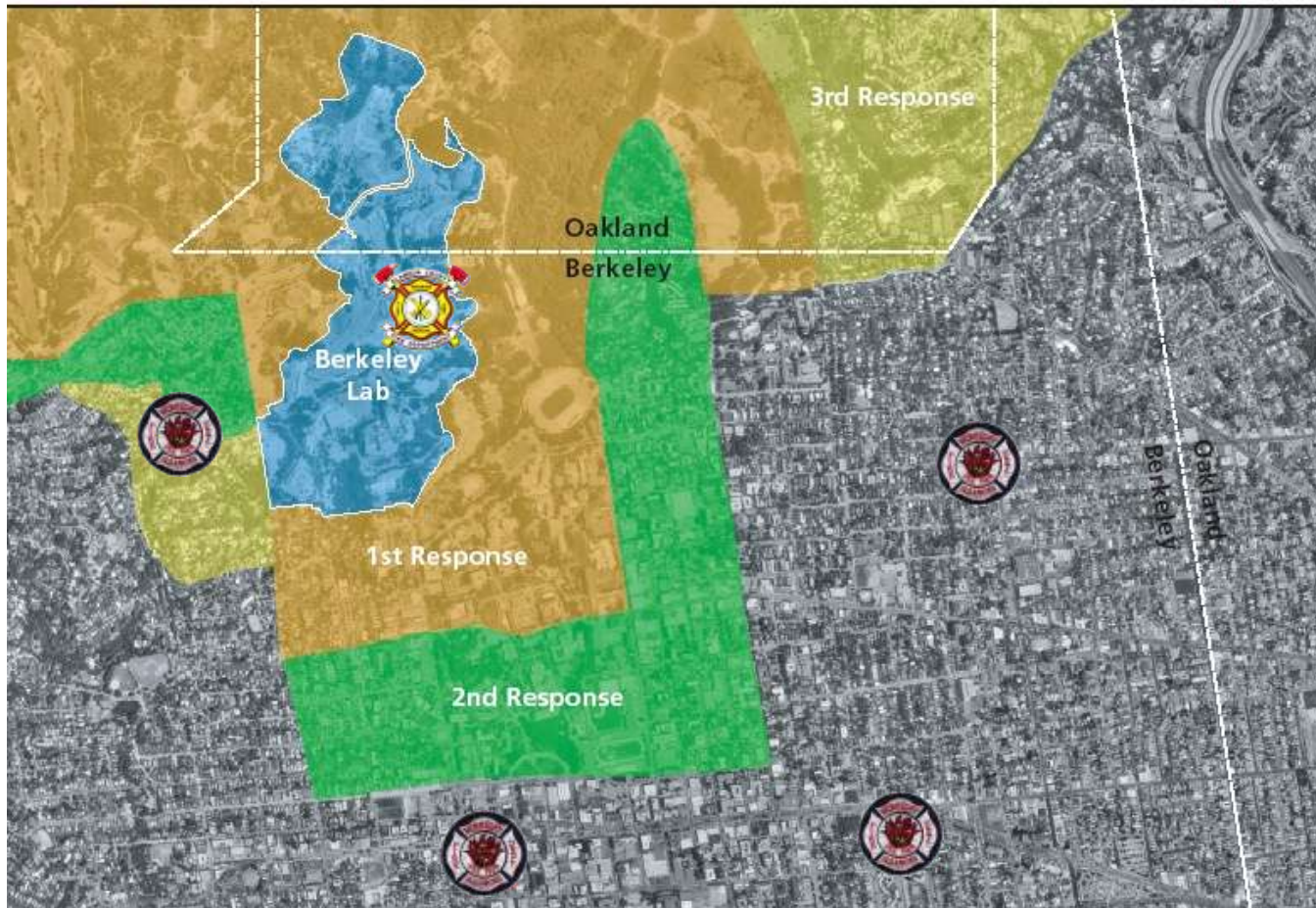
Automatic Aid -



Response Areas



LBNL/BFD AUTOMATIC AID DISTRICT



LBNL Fire Station

Auto Aid Response Offsite

| | 2008 | 2009 | 2010 |
|---------|------|------|------|
| Onsite | 61% | 66% | 69% |
| Offsite | 39% | 34% | 31% |

