



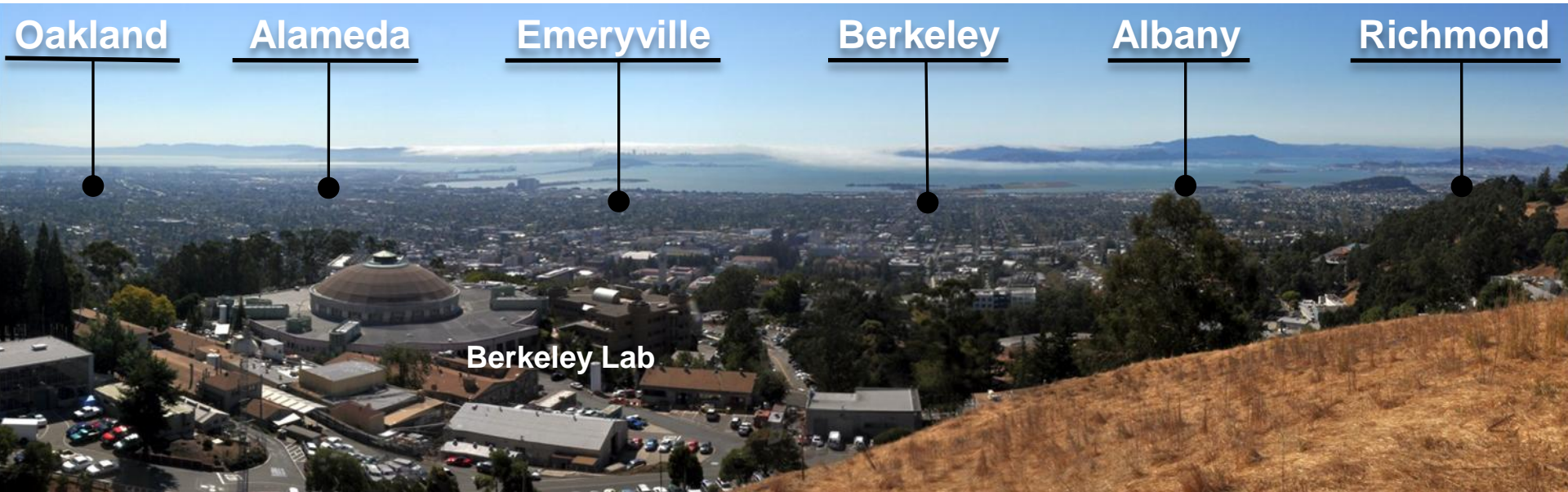
BERKELEY LAB / SECOND CAMPUS

JIM KRUPNICK

Associate Lab Director, Operations
& Chief Operating Officer

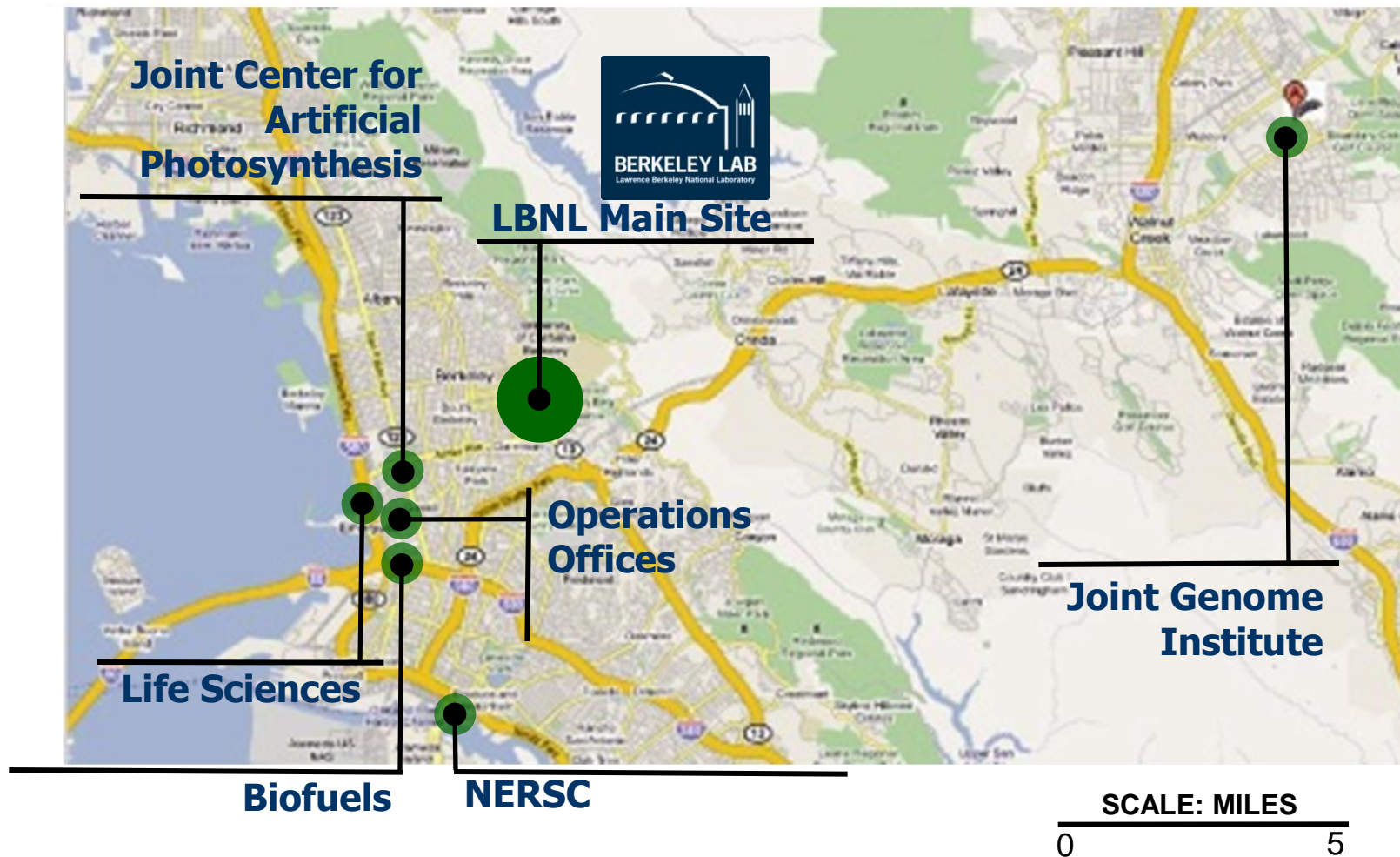
Presentation to the Community Advisory Group
July 14, 2011

Second Campus



- ## Topics
- Brief Review
 - Sites Under Evaluation
 - Community Meeting Schedule
 - Path Forward

Approximately 25% of Lab Facilities are Offsite



Strategic Need:

Consolidate programs from leased facilities and provide space for future growth at a site in the East Bay.

Enabling LBNL to:

- Reduce barriers to scientific collaboration
- Provide more science at lower cost
- Host future scientific programs



Starting point for Second Campus: consolidation of existing biosciences programs



BIOFUELS
Emeryville
(~115,000 GSF)



LIFE SCIENCES
West Berkeley
(~230,000 GSF)

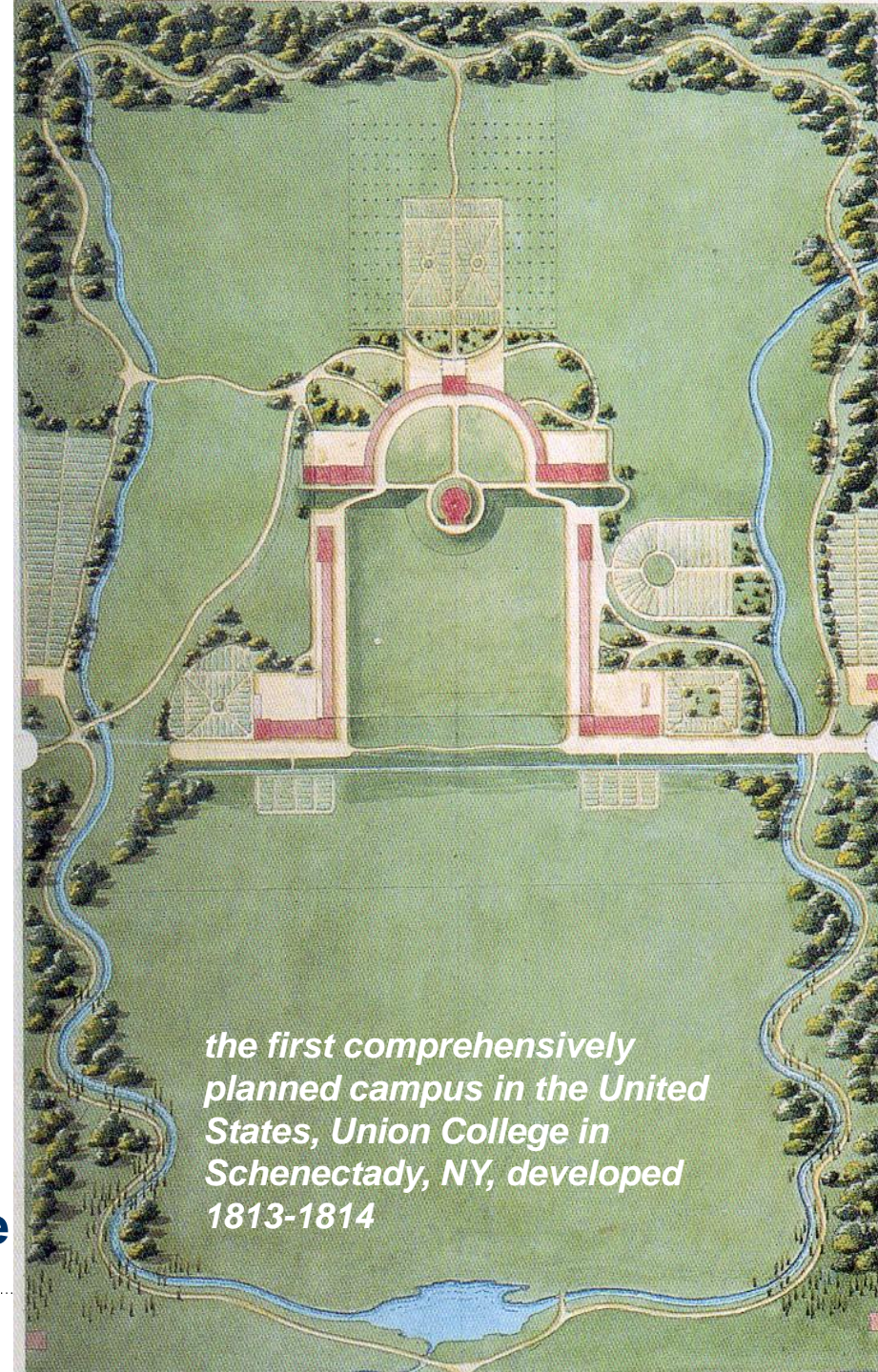


**JOINT GENOME
INSTITUTE**
Walnut Creek
(~130,000 GSF)

Total Gross Square Feet about 475,000

Site Characteristics

- World-class research environment
- Proximity to LBNL main site
- Sustainable development
- Compatible with surrounding neighborhoods and amenities
- 2M square feet of total capacity
- Welcoming community
- Minimal environmental remediation needed
- Low-vibration environment
- Public transit availability
- Low development costs
- Lower cost utilities
- Open site with a campus atmosphere



the first comprehensively planned campus in the United States, Union College in Schenectady, NY, developed 1813-1814

Second Campus Sites Under Evaluation

Richmond Field Station

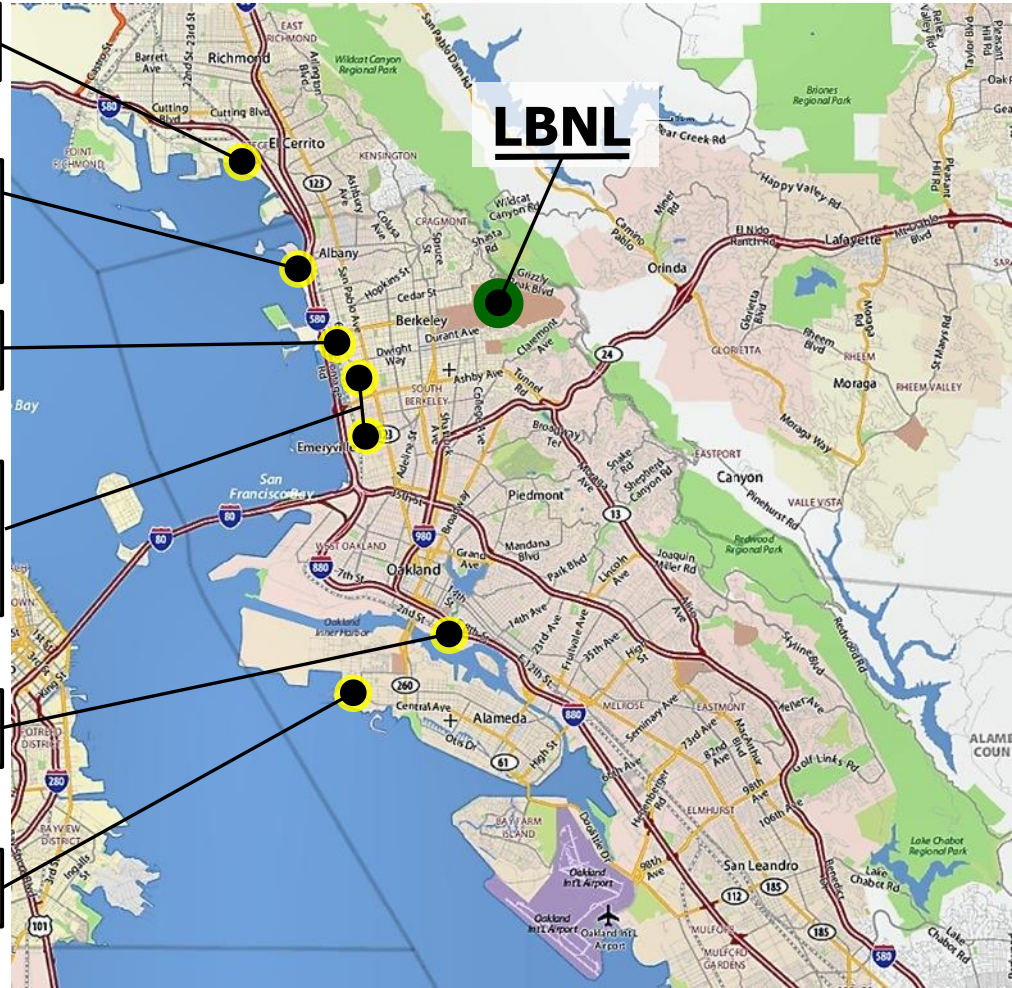
Albany/Berkeley Golden Gate Fields

Berkeley Aquatic Park West

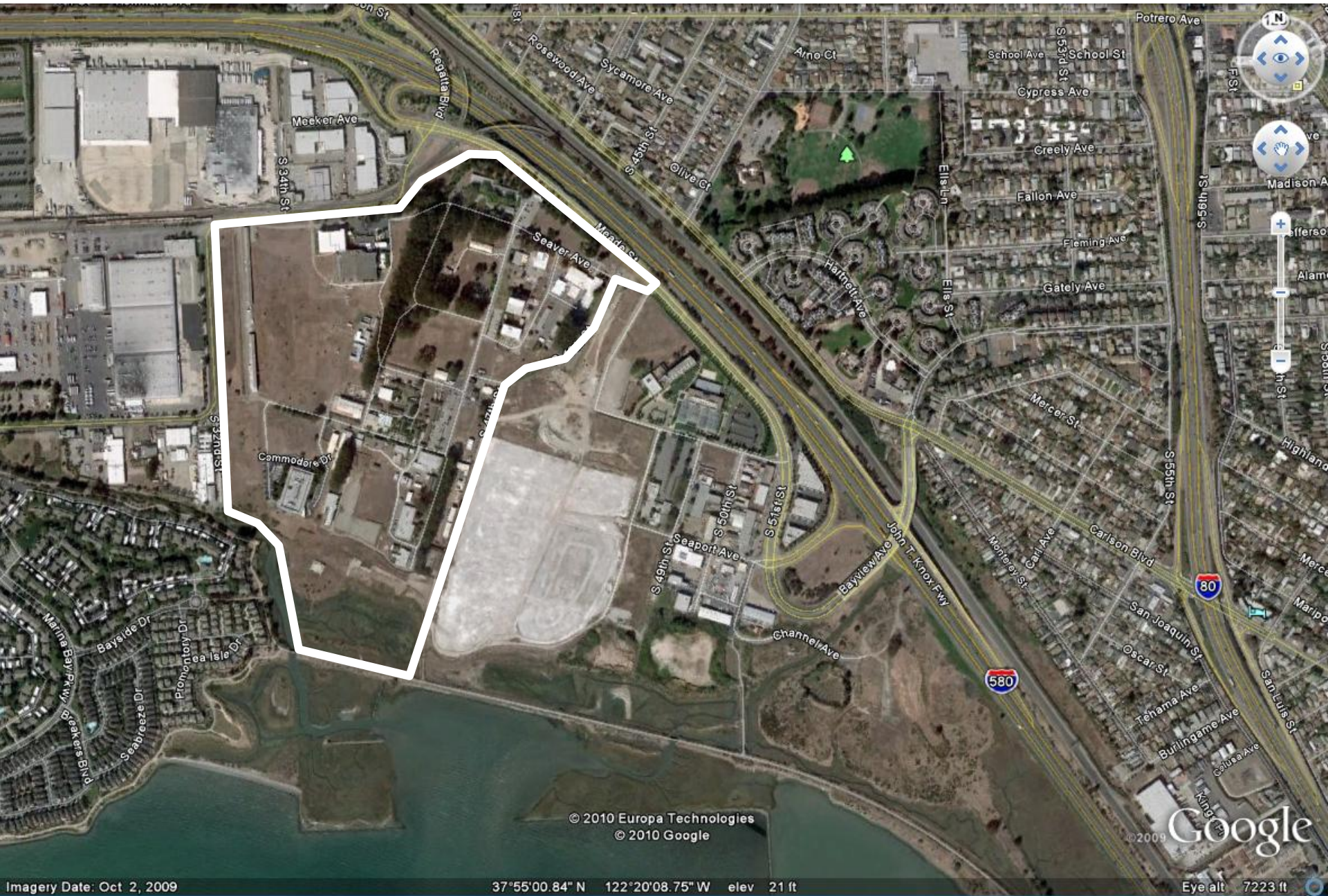
Berkeley Aquatic Park Emeryville Emery Station

Oakland Brooklyn Basin

Alameda Point



Richmond Field Station



© 2010 Europa Technologies
© 2010 Google

© 2009 Google

Albany/Berkeley Golden Gate Fields



© 2010 Europa Technologies
© 2010 Google

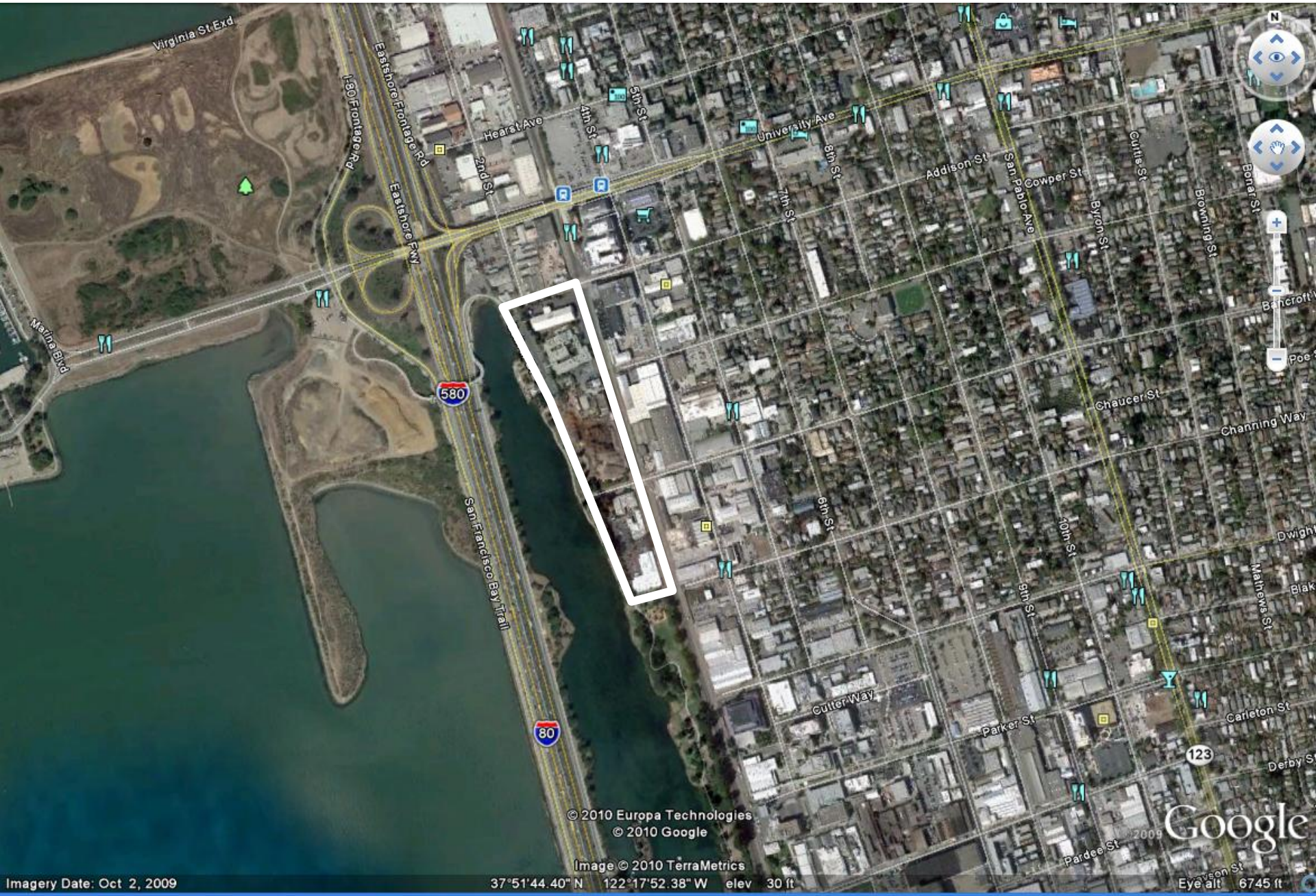
Image © 2010 TerraMetrics
37°52'57.84" N 122°18'31.99" W elev 12 ft

© 2009 Google

Eye alt 6745 ft

Imagery Date: Oct 2, 2009

Berkeley Aquatic Park West



© 2010 Europa Technologies
© 2010 Google

Image © 2010 TerraMetrics

Imagery Date: Oct 2, 2009

37°51'44.40" N 122°17'52.38" W elev 30 ft

Google
2009
Eye alt 6745 ft

Berkeley Aquatic Park Center (a)

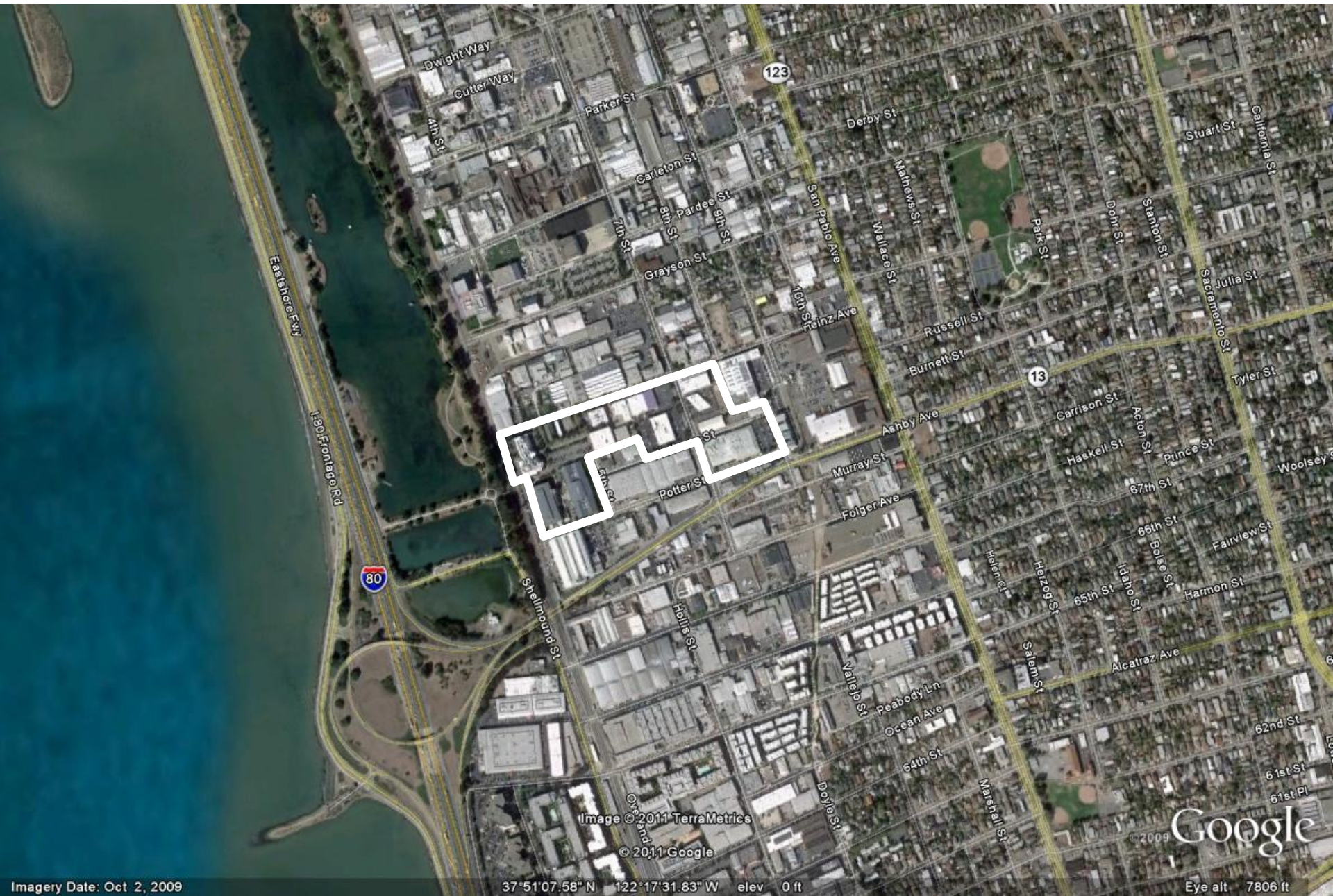


Image © 2011 TerraMetrics

© 2011 Google

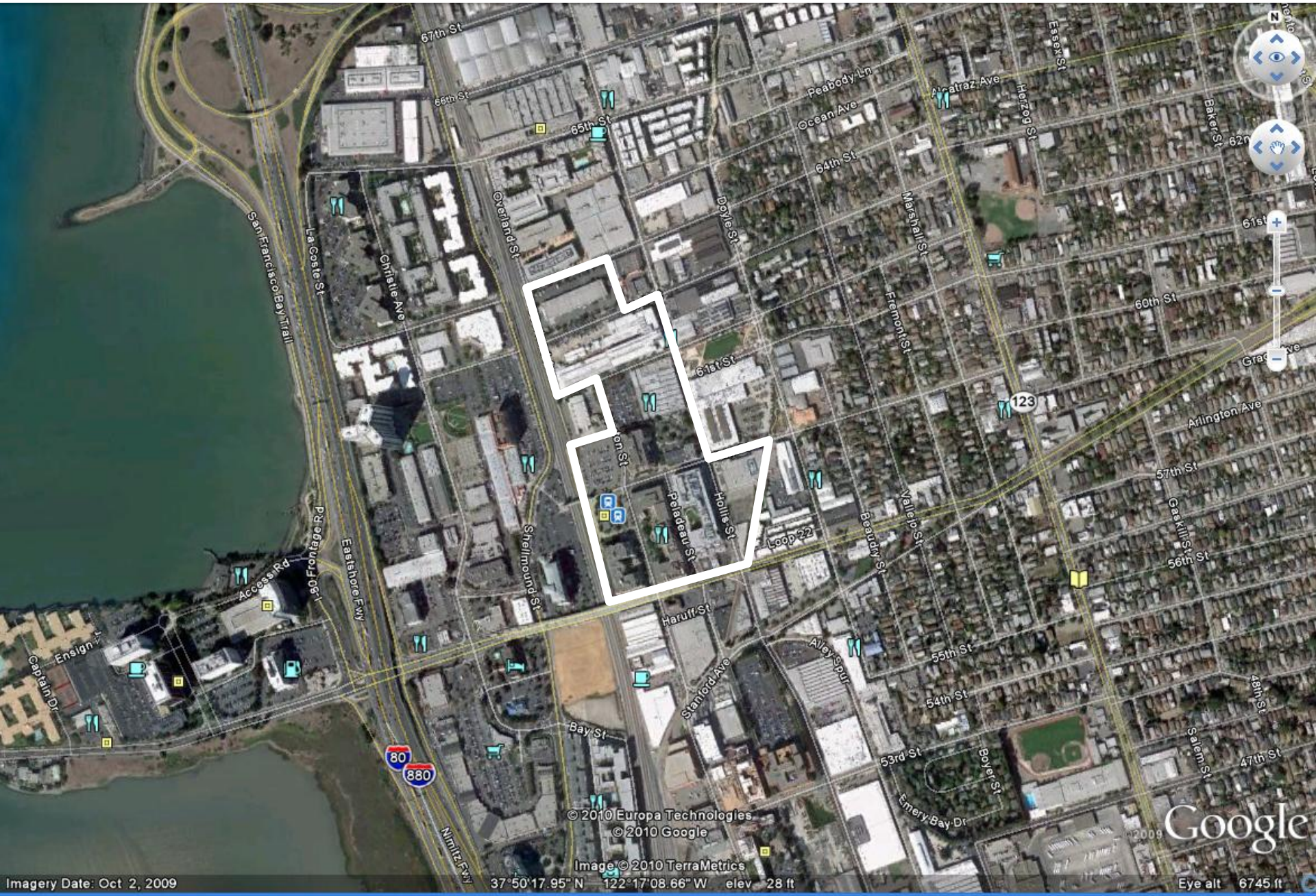
Google

Imagery Date: Oct 2, 2009

37°51'07.58" N 122°17'31.83" W elev 0 ft

Eye alt 7806 ft

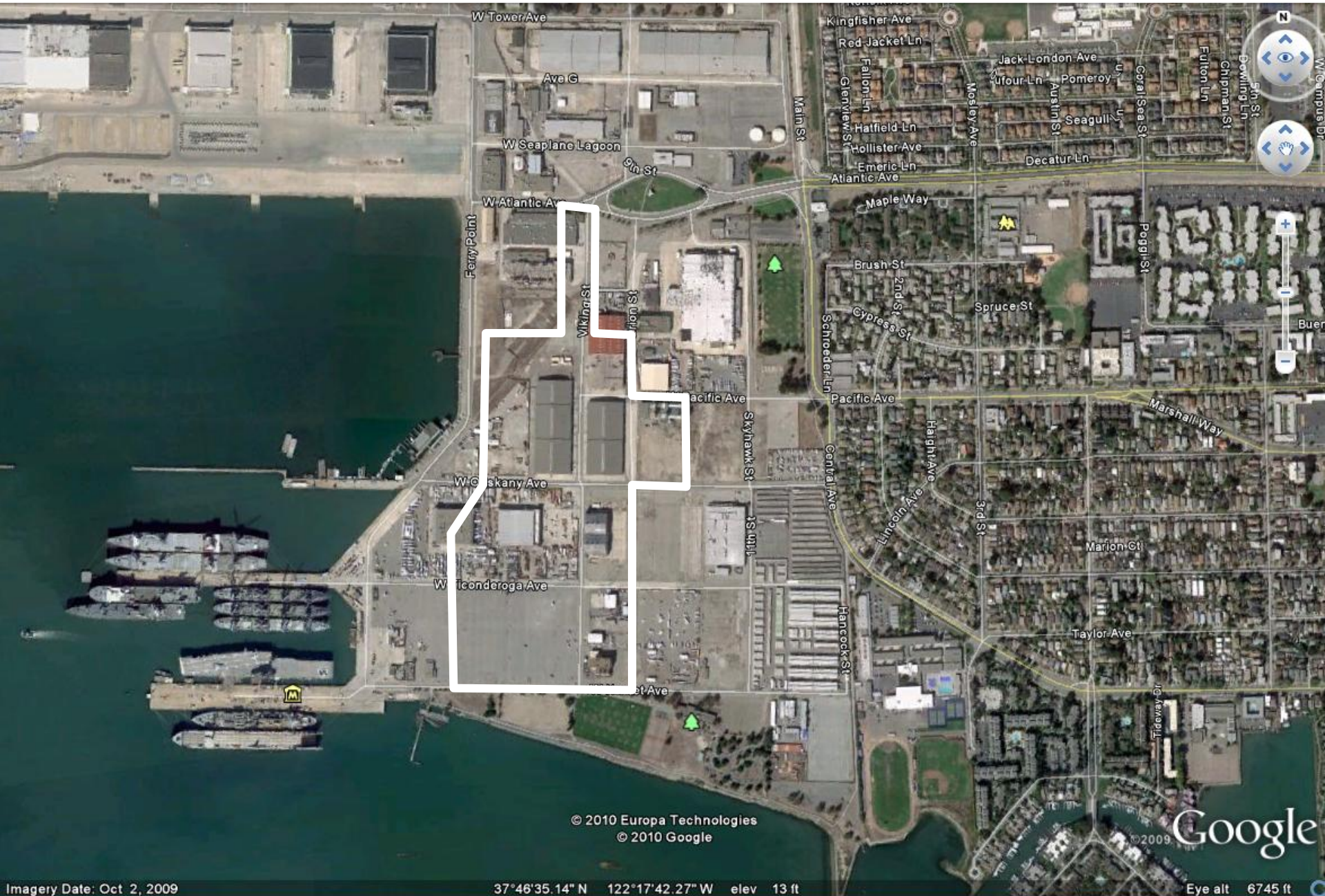
Emeryville Emery Station (b)



Oakland Brooklyn Basin



Alameda Point



© 2010 Europa Technologies
© 2010 Google

© 2009 Google

Public Meetings Schedule

Date	Site	Location	
Jul 13	Alameda Point	Auctions by the Bay Theater	7:00pm
Jul 14	LBNL Community Advisory Group	North Berkeley Senior Center	6:00pm
Jul 21	Richmond Field Station	Richmond Memorial Aud.	7:00pm
Jul 27	Brooklyn Basin	Jack London Aquatic Center	7:00pm
Aug 3	Golden Gate Fields	Albany Community Center	7:30pm
Aug 4	Aquatic Park West	Frances Albrier Comm. Center	7:00pm
Aug 8	Emeryville/EmeryStation/Berkeley	Emeryville City Hall	7:00pm
Sep 22	LBNL Community Advisory Group	North Berkeley Senior Center	6:00pm

<http://www.lbl.gov/Community/second-campus/>



Conceptual Process **(as presented Sept 13, 2010)**

- Meetings with UC, DOE, CAG
- Determination of site requirements
- Formal Request for Proposals late fall **Jan 2011**
- Evaluate sites and select **6** for detailed look- **May 2011**
- Final site selection - summer 2011 **(preferred site – Nov 11)**
- Environmental Review Process - through 2012 **(2013)**
- UC and DOE final approval and financing
- Design, site preparations, construction - 2015? **(2016)**



Summary Schedule

- Community outreach
- Due diligence on short-listed sites
- Announce preferred site – November 2011
- Environmental review – 2012 through 2013
- Construction – 2014 through 2016
- Occupancy – 2016



Questions?