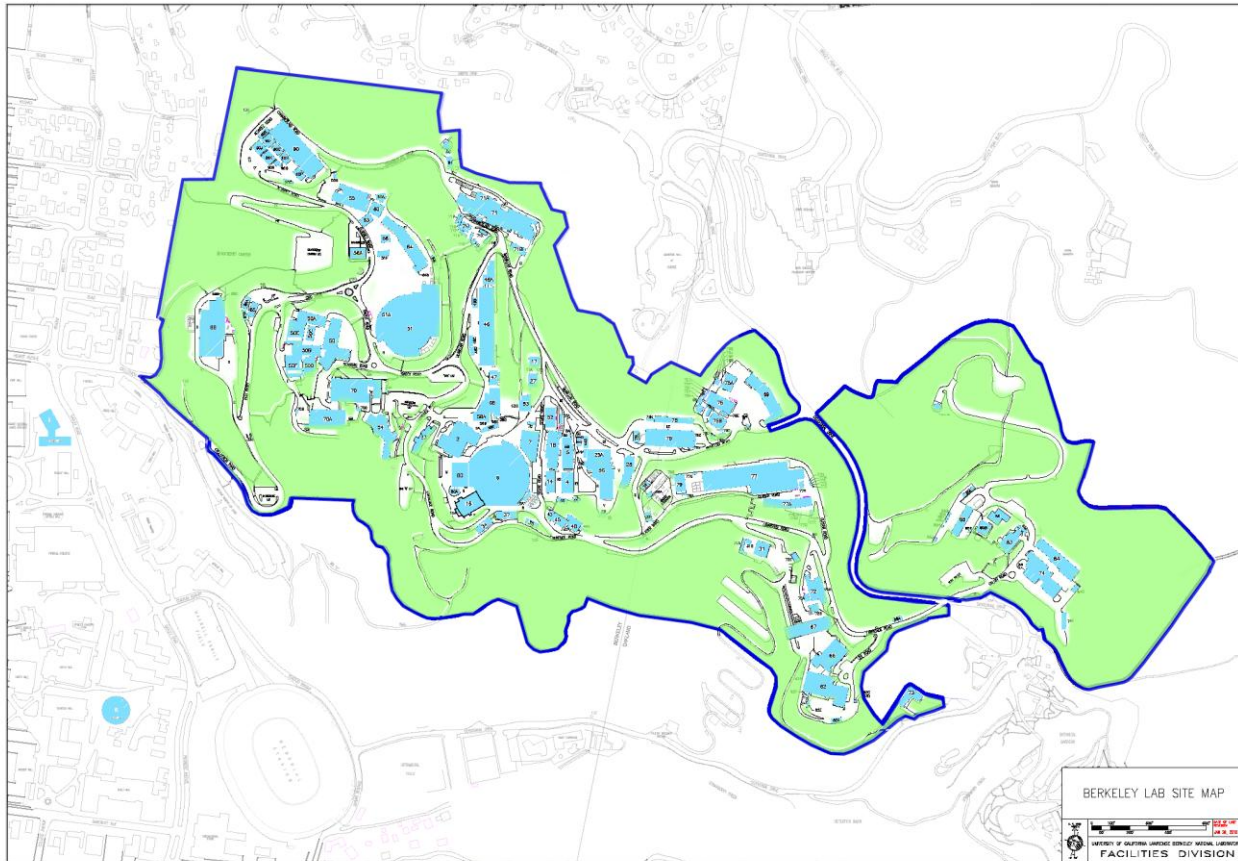
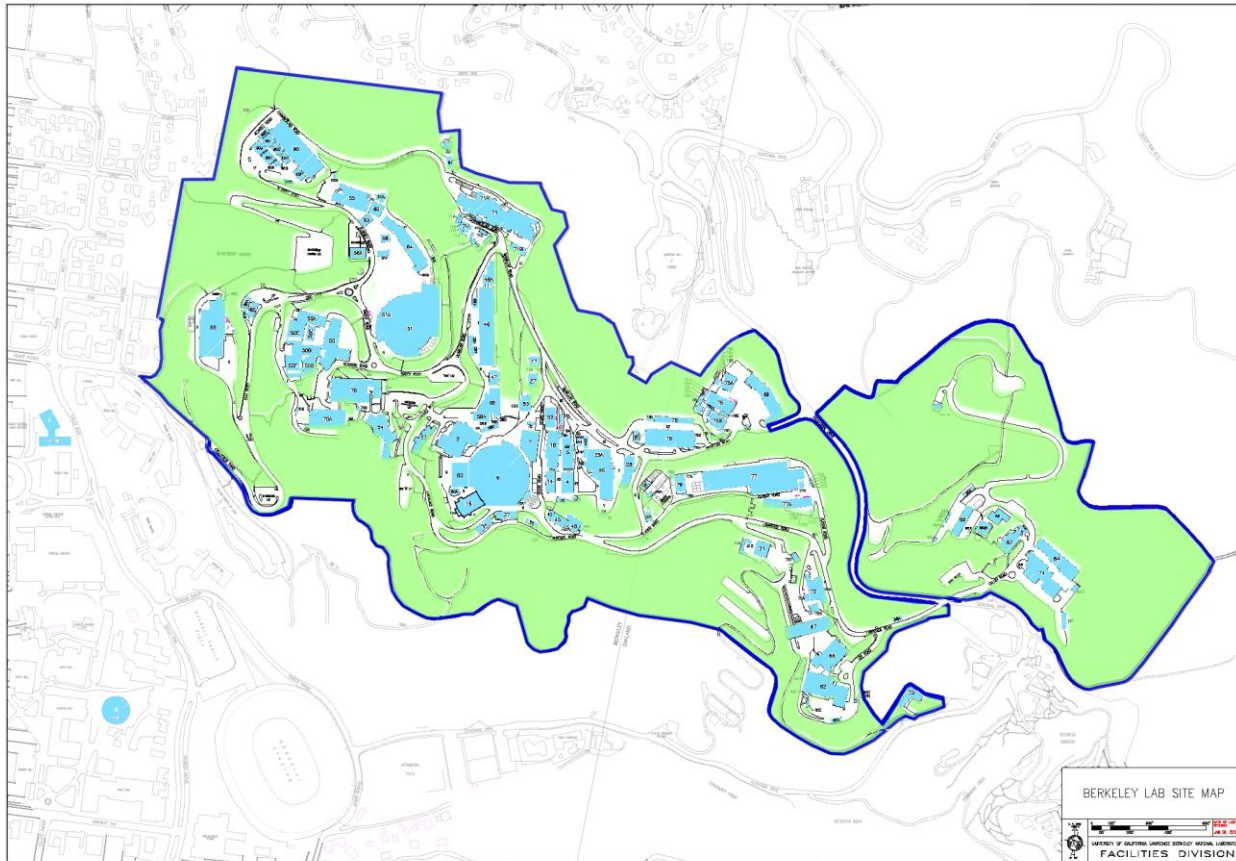


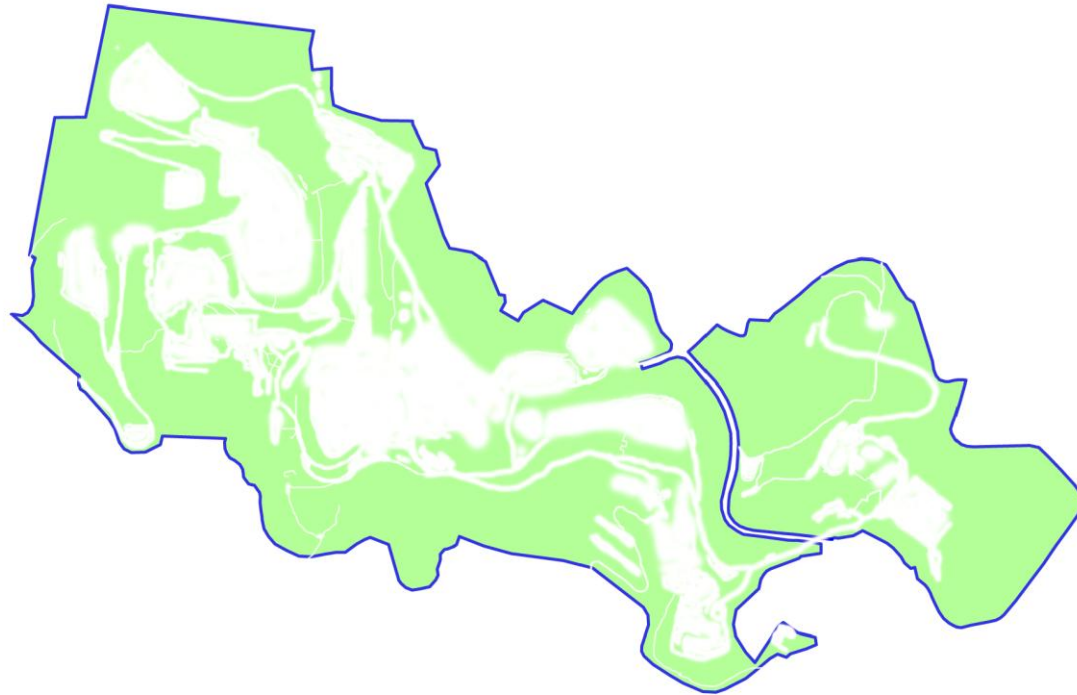
Human Activities at the Berkeley Lab Site



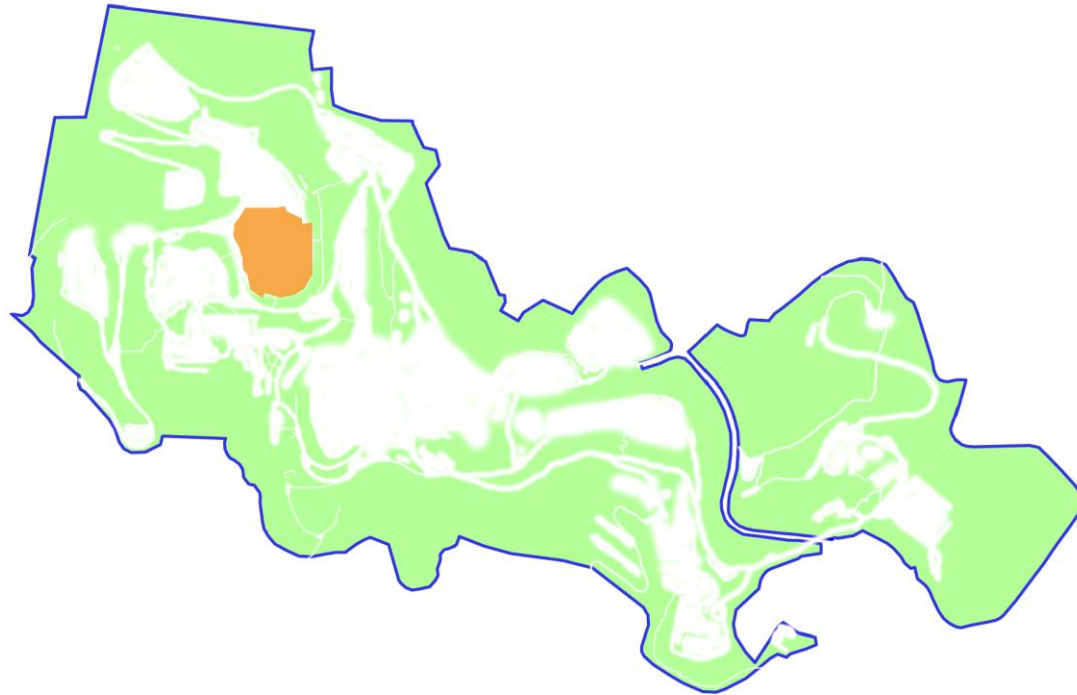
Operations



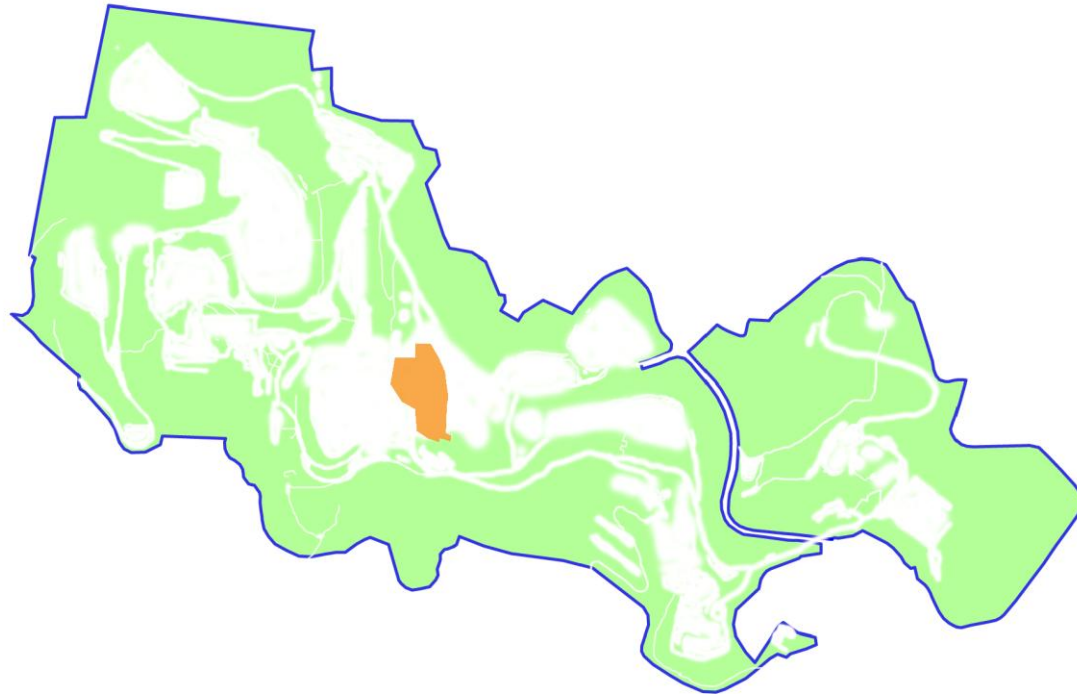
Construction and Demolition



Construction and Demolition



Construction and Demolition



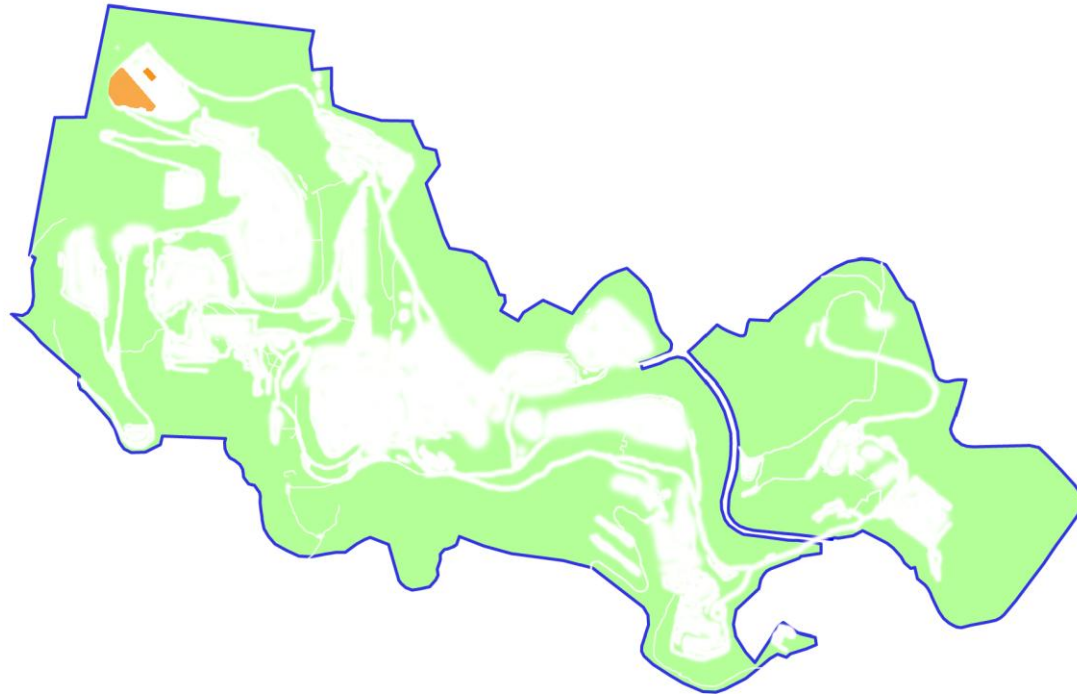
Construction and Demolition



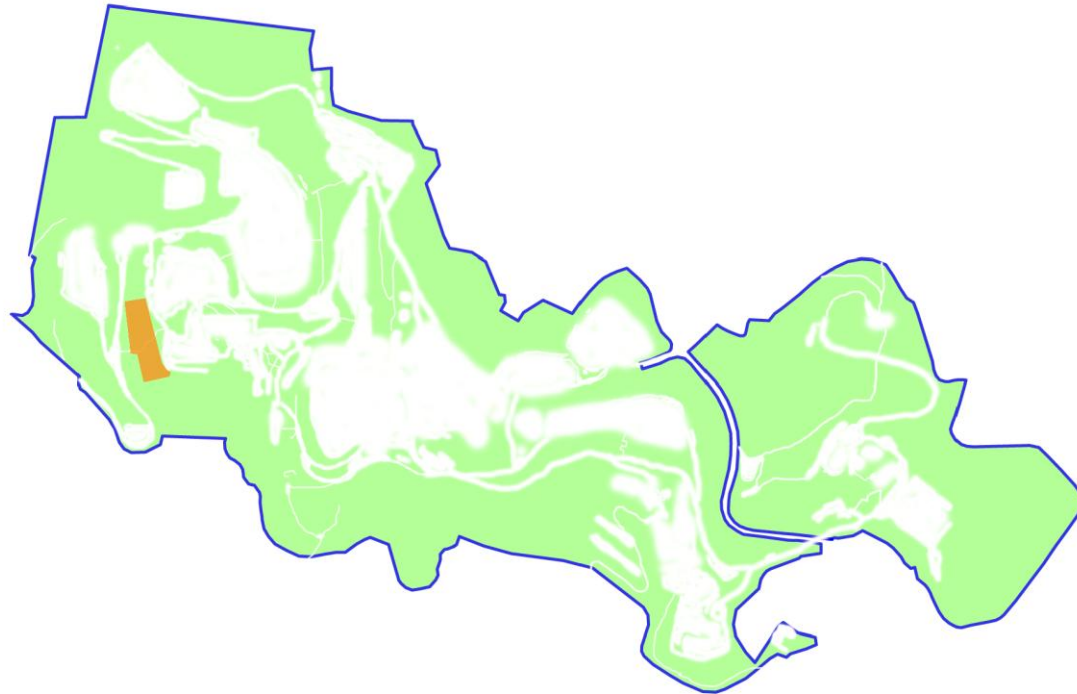
Construction and Demolition



Construction and Demolition



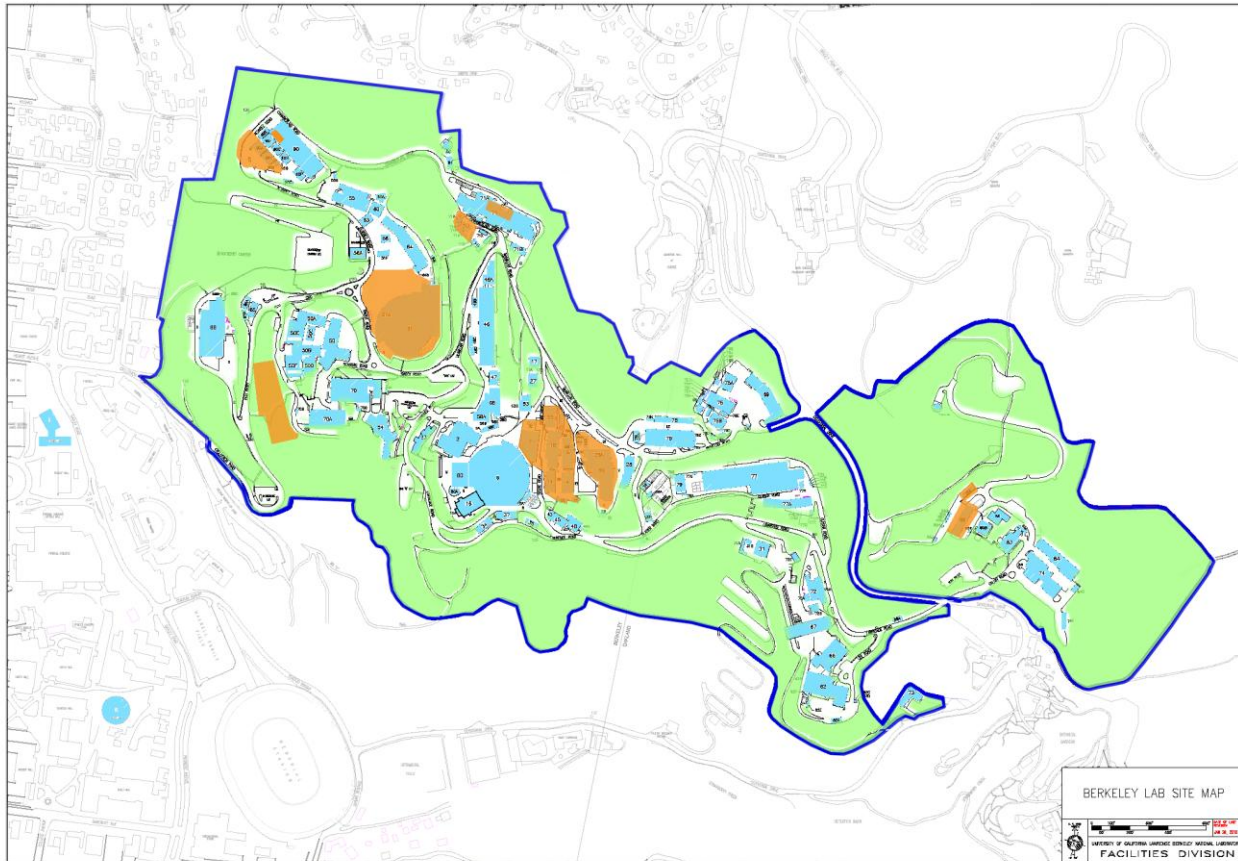
Construction and Demolition



Construction and Demolition



Construction and Demolition



Construction and Demolition



Vegetation Management

Natural Resources Management

- Endangered Species Act (Fed)
- Migratory Bird Treaty Act
- Clean Air Act
- Clean Water Act (Section 404)
- Rivers and Harbors Act
- Executive Orders
- NEPA
- CEQA
- Endangered Species Act (State)
- Calif. Native Plant Protection Act
- Calif. Fish and Game Code

Laws and Regulations

- US Fish and Wildlife Service
- US Environmental Protection Agency
- US Army Corps of Engineers
- US Department of Energy
- California Dep't of Fish and Game
- BAAQMD
- State Water Res. Control Board
- Regional Water Quality Control Board
- University of California

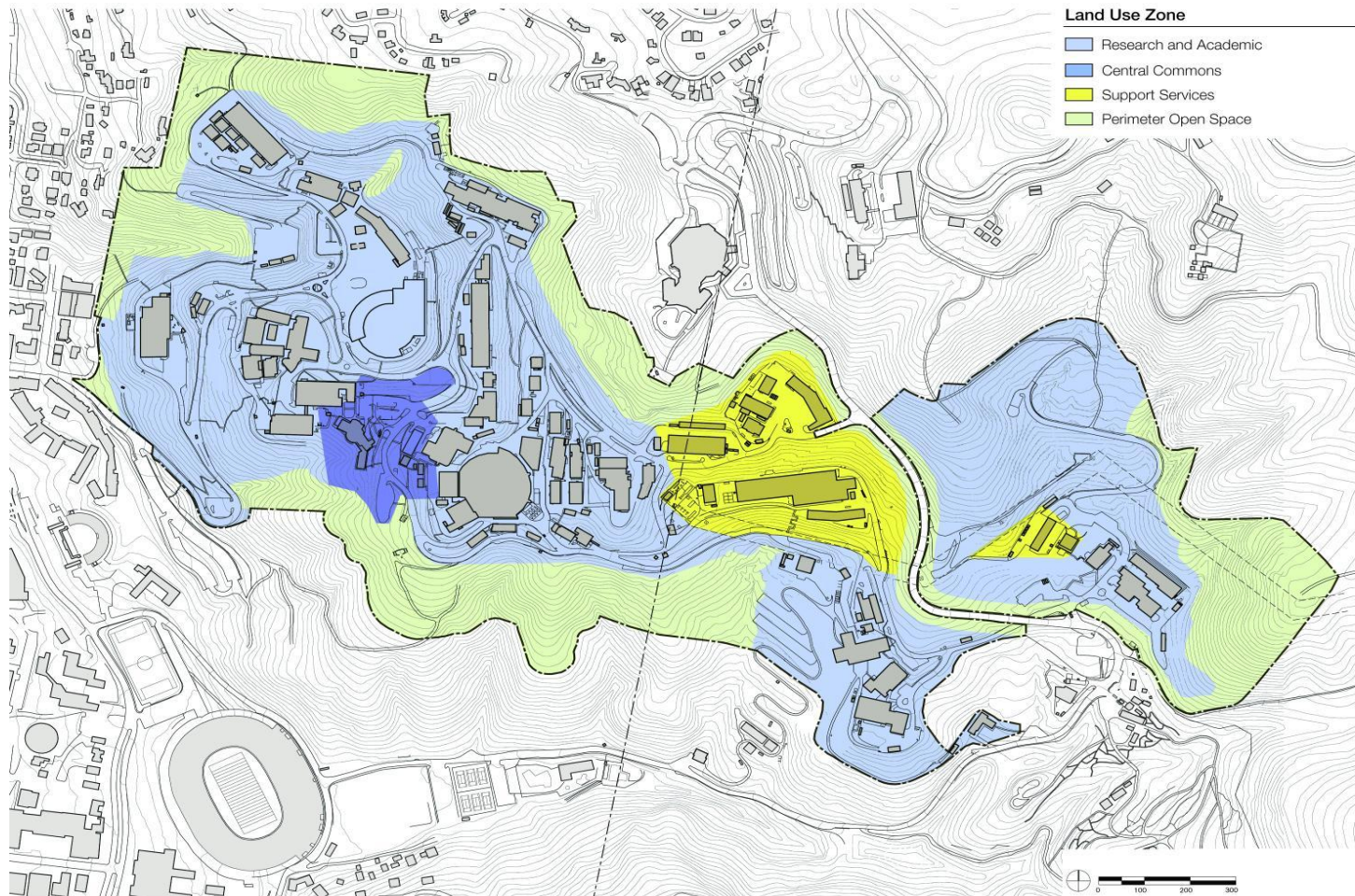
Laws and Regulations

Sustainability

LEED Certification

Environmental Goals and Targets

DOE and UC Policies



Long Range Development Planning

LBNL Natural Resources Presentation
CAG Meeting, July 14, 2011

Jeff Philliber
LBNL Environmental Planning Group

- Aesthetics
- Air Quality
- Biological Resources
- Cultural Resources
- Hazards/Haz Mat
- Water Quality
- Noise
- Traffic

LRDP Mitigation Measures and SPF's

- Aesthetics
- Air Quality
- Biological Resources**
- Cultural Resources
- Hazards/Haz Mat
- Water Quality
- Noise
- Traffic

LRDP Mitigation Measures and SPF's

- **Biological Resources**

LRDP Mitigation Measures and SPF's

- **Biological Resources**

- Wetlands
- Jurisdictional Waters
- Nesting Birds
- Roosting Bats
- Alameda Whipsnake
- Special Status Plants

LRDP Mitigation Measures and SPF's

- **Biological Resources**

- **Wetlands**

- Jurisdictional Waters

- Nesting Birds

- Roosting Bats

- Alameda Whipsnake

- Special Status Plants

LRDP Mitigation Measures and SPF's

- **Biological Resources**

- Wetlands
- **Jurisdictional Waters**
- Nesting Birds
- Roosting Bats
- Alameda Whipsnake
- Special Status Plants

LRDP Mitigation Measures and SPF's

- **Biological Resources**

- Wetlands
- Jurisdictional Waters
- **Nesting Birds**
- Roosting Bats
- Alameda Whipsnake
- Special Status Plants

LRDP Mitigation Measures and SPF's

- **Biological Resources**

- Wetlands
- Jurisdictional Waters
- Nesting Birds
- **Roosting Bats**
- Alameda Whipsnake
- Special Status Plants

LRDP Mitigation Measures and SPF's

- **Biological Resources**

- Wetlands
- Jurisdictional Waters
- Nesting Birds
- Roosting Bats
- **Alameda Whipsnake**
- Special Status Plants

LRDP Mitigation Measures and SPF's

- **Biological Resources**

- Wetlands
- Jurisdictional Waters
- Nesting Birds
- Roosting Bats
- Alameda Whipsnake
- **Special Status Plants**

LRDP Mitigation Measures and SPF's

EH&S Division

Community Relations

Environmental Planning

Stakeholders

LBNL and Stakeholders