



# BERKELEY LAB

LAWRENCE BERKELEY NATIONAL LABORATORY

# Community Advisory Group

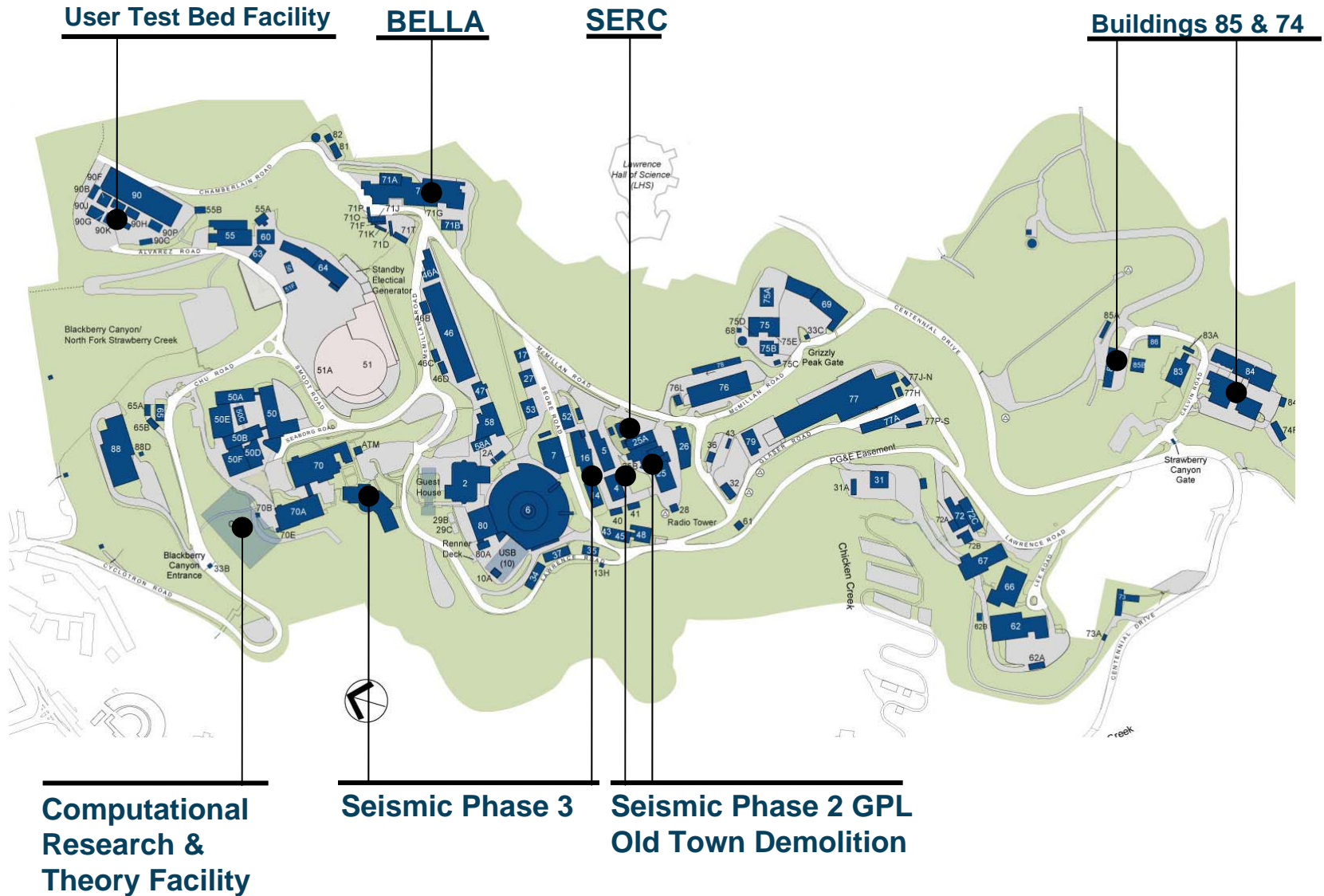
## Construction Traffic Management

28 April 2010

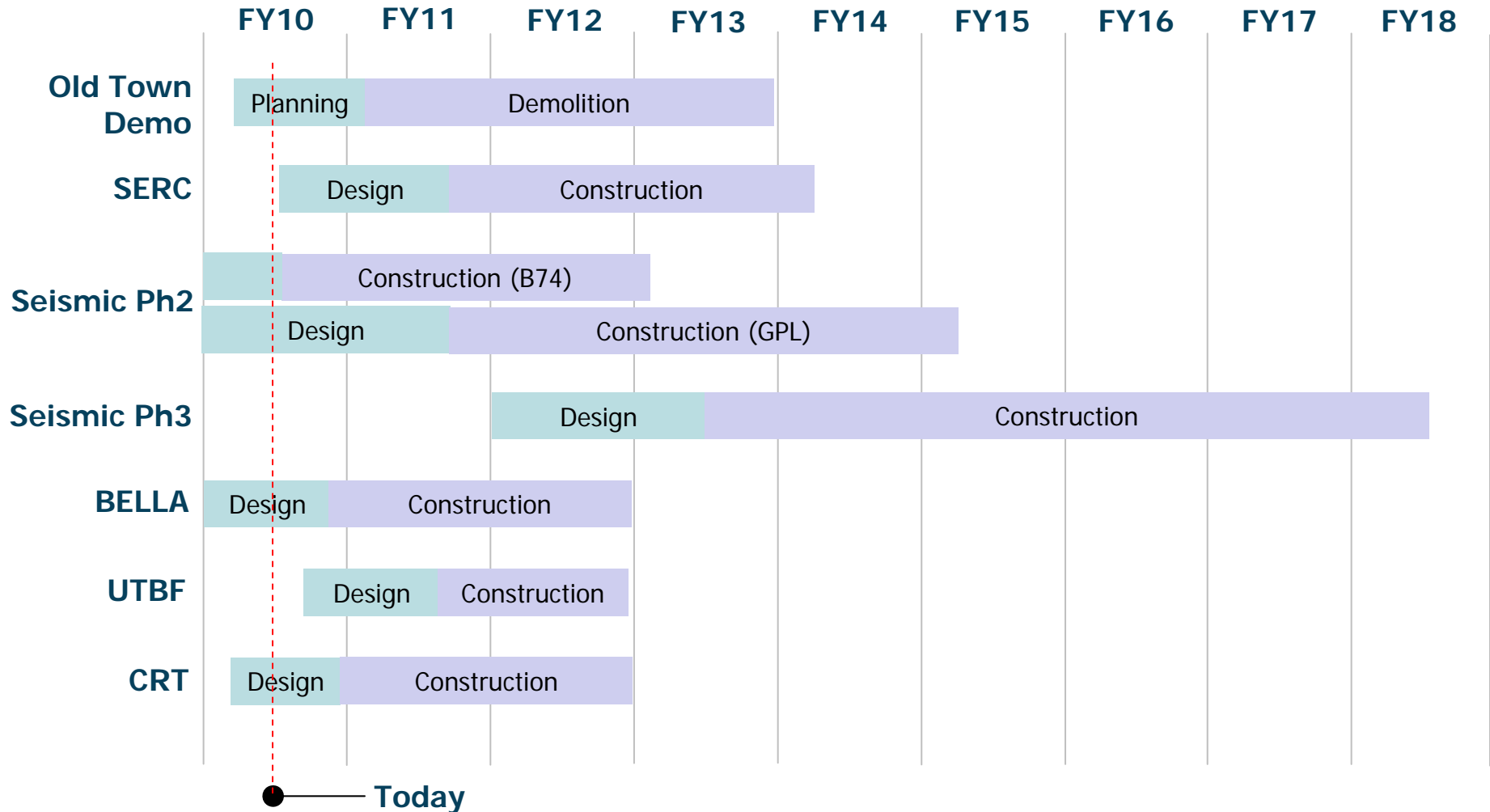
# Topics

- Project List & Timeline from last meeting
- Designated Routes & Limits
- Site Construction Coordinator Program
- Reporting

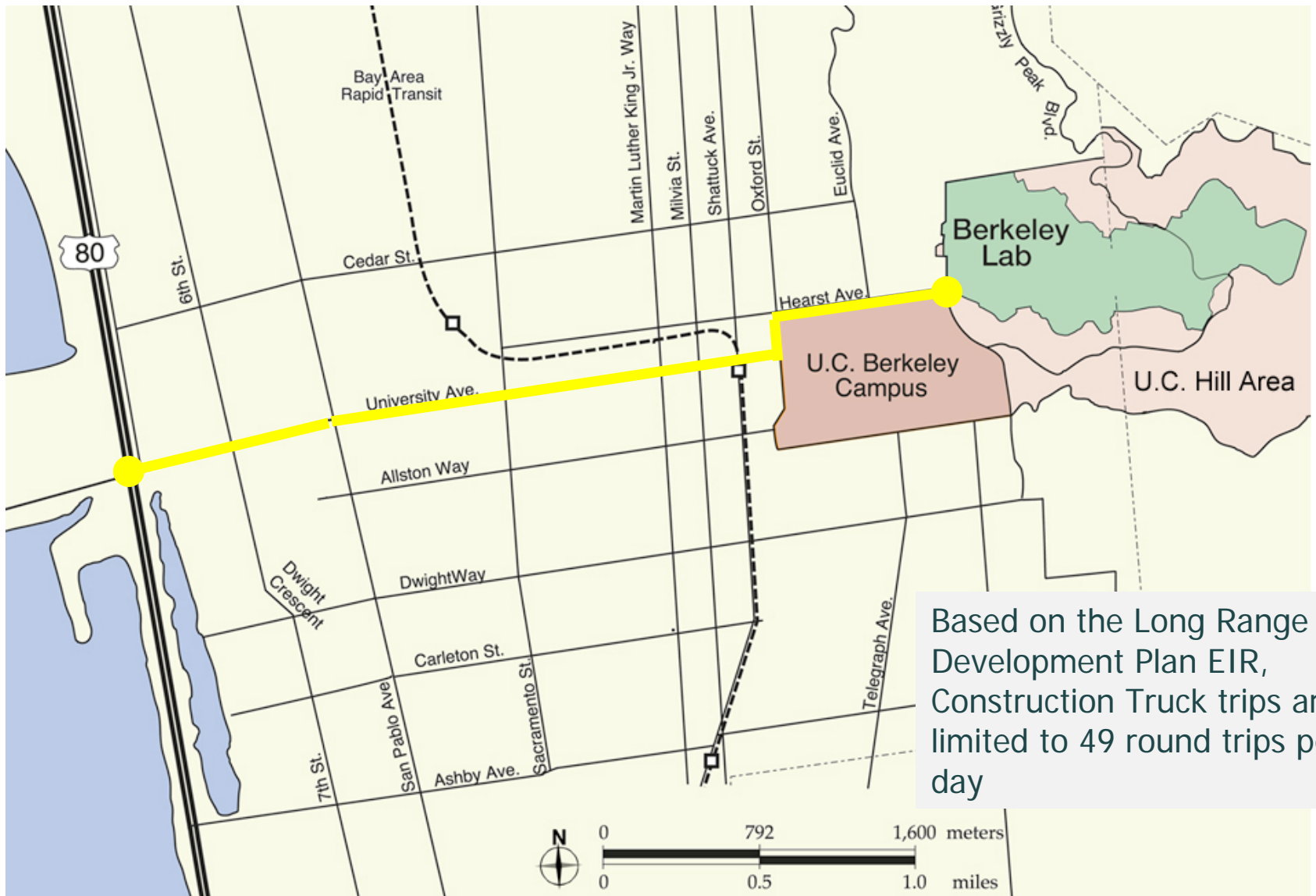
# LBNL Project Overview



# Projected Timelines



# Designated Construction Truck Route



# Site Construction Coordinator Program

- LBNL established the Site Construction Coordinator program November 2008
- Scope is to manage and minimize impacts of construction traffic and parking
- Tools include:
  - ✓ Weekly meetings with all project teams
  - ✓ Updating the Truck Trip Forecast
  - ✓ Monitoring actual truck trip counts
  - ✓ Halting/Rescheduling trucks that would exceed limits
  - ✓ Managing truck trip plans between projects team
  - ✓ Approve contractor lay-down areas & parking
  - ✓ Pilot car program

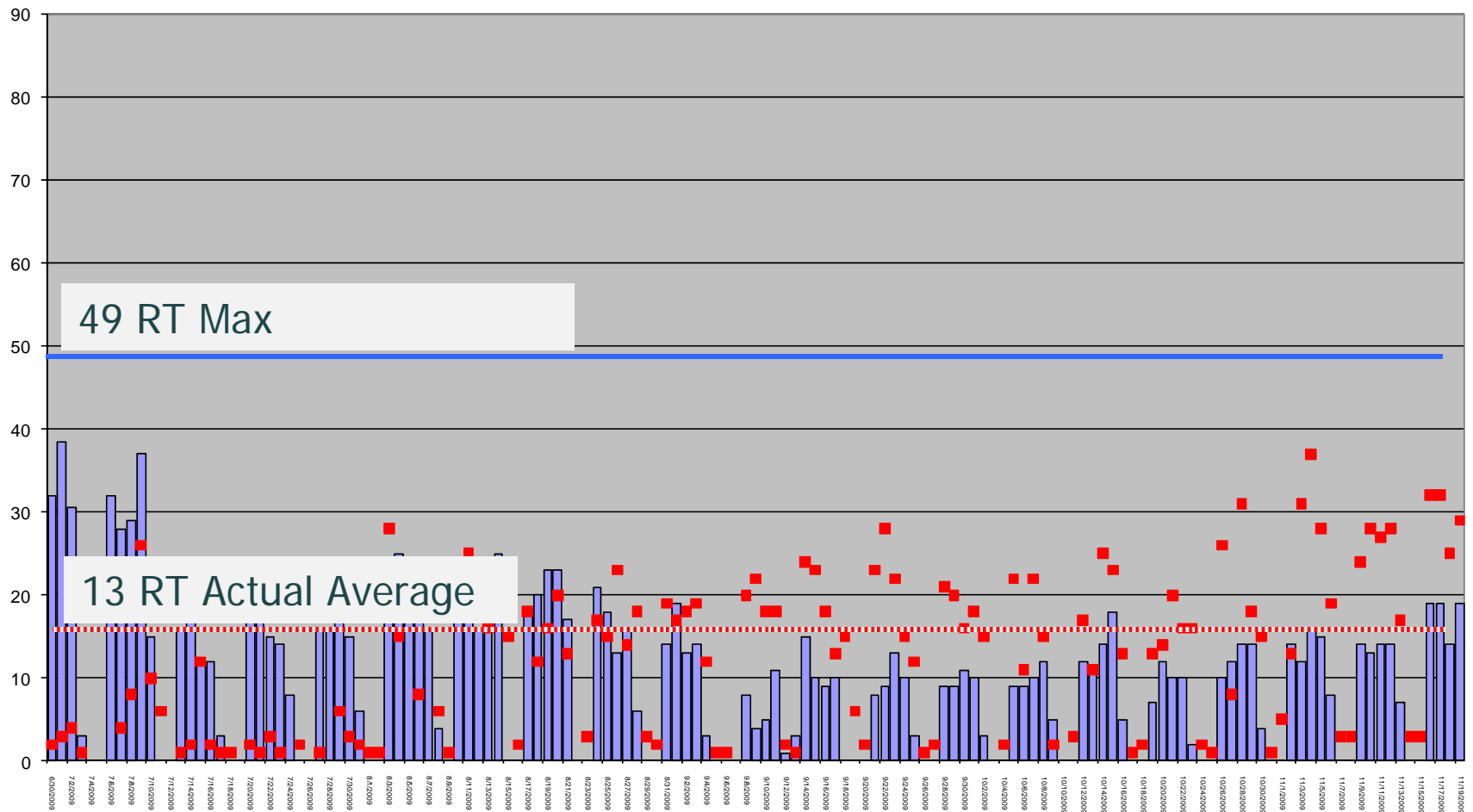
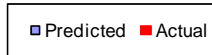


**Les Dutton**  
SCC and Sr Project Manager

# Daily Truck Trips – Projected vs Actual

## Truck Trips- Prediction vs Actual

Historical Data: 06/30/09 - 11/19/09



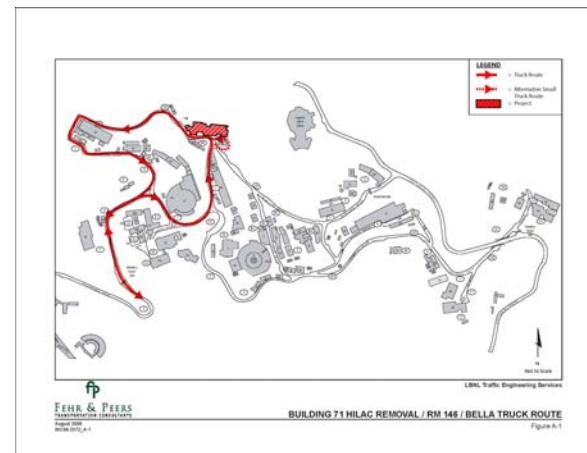
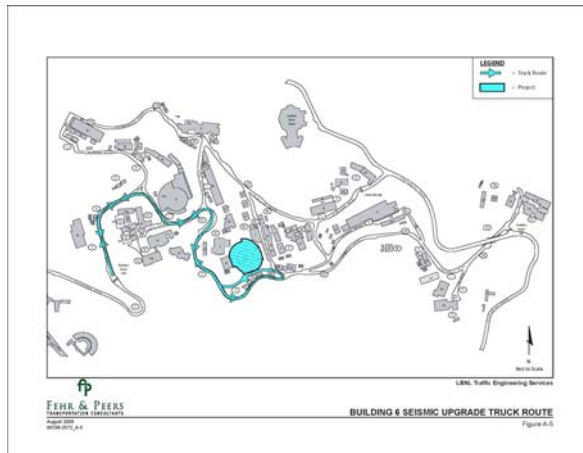
# Site Construction Coordinator Program



Site Lay-down Area



On Site Pilot Car Service



On Site Truck Routes



# Site Construction Coordinator Program Reporting

- Weekly meetings with contractors & project teams
- Monthly meetings with LBNL Environmental Planner and Environmental Attorney
- Monthly reporting with Facilities Division Director
- Monthly reporting to Chief Operating Officer
- Periodic meetings with DOE and Campus
- LBNL Construction Website