

# Lawrence Berkeley National Laboratory

## Seismic Safety and Modernization (SSM) Welcome Center

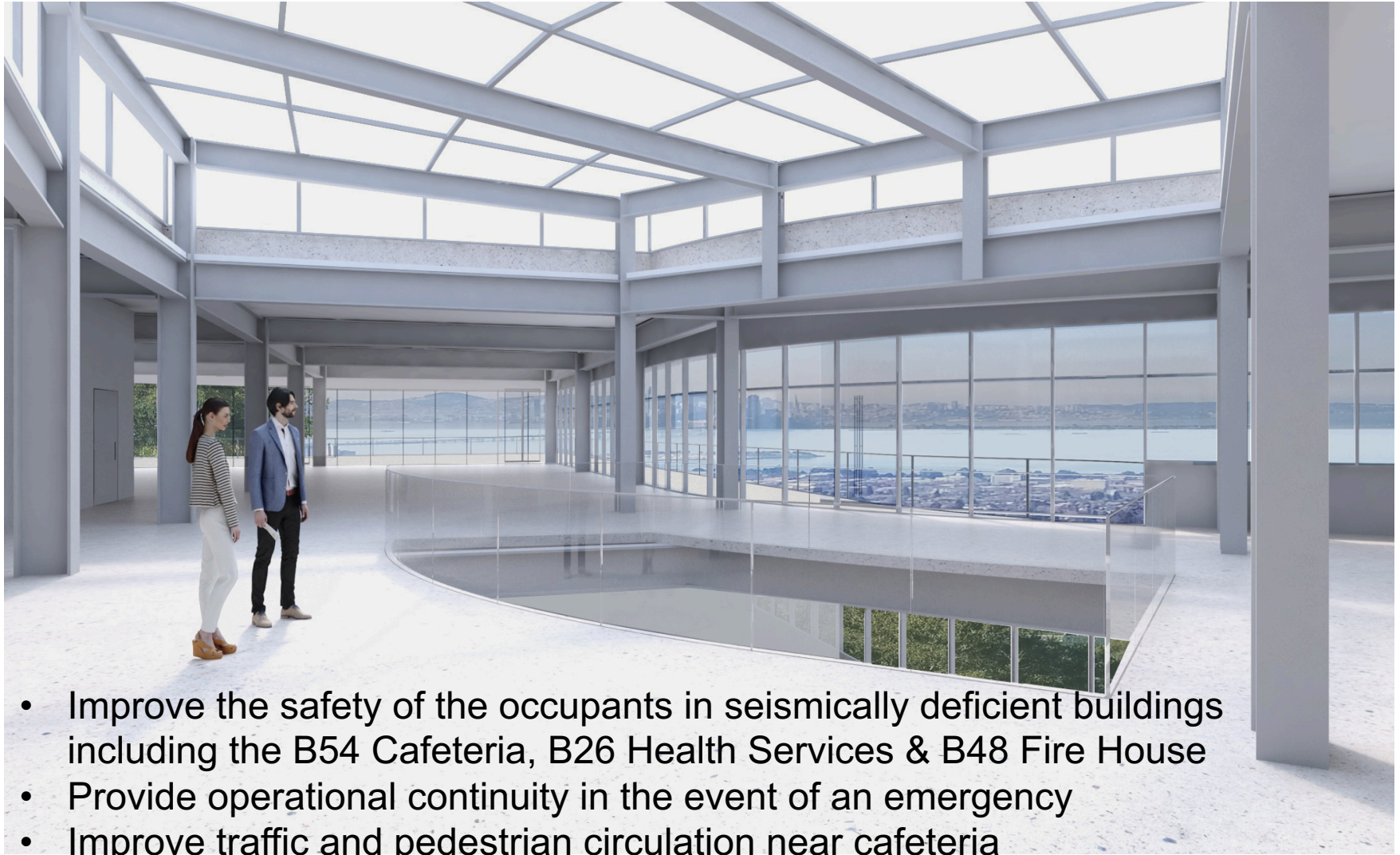
Bill Beedle, Project Director



U.S. DEPARTMENT OF  
**ENERGY**



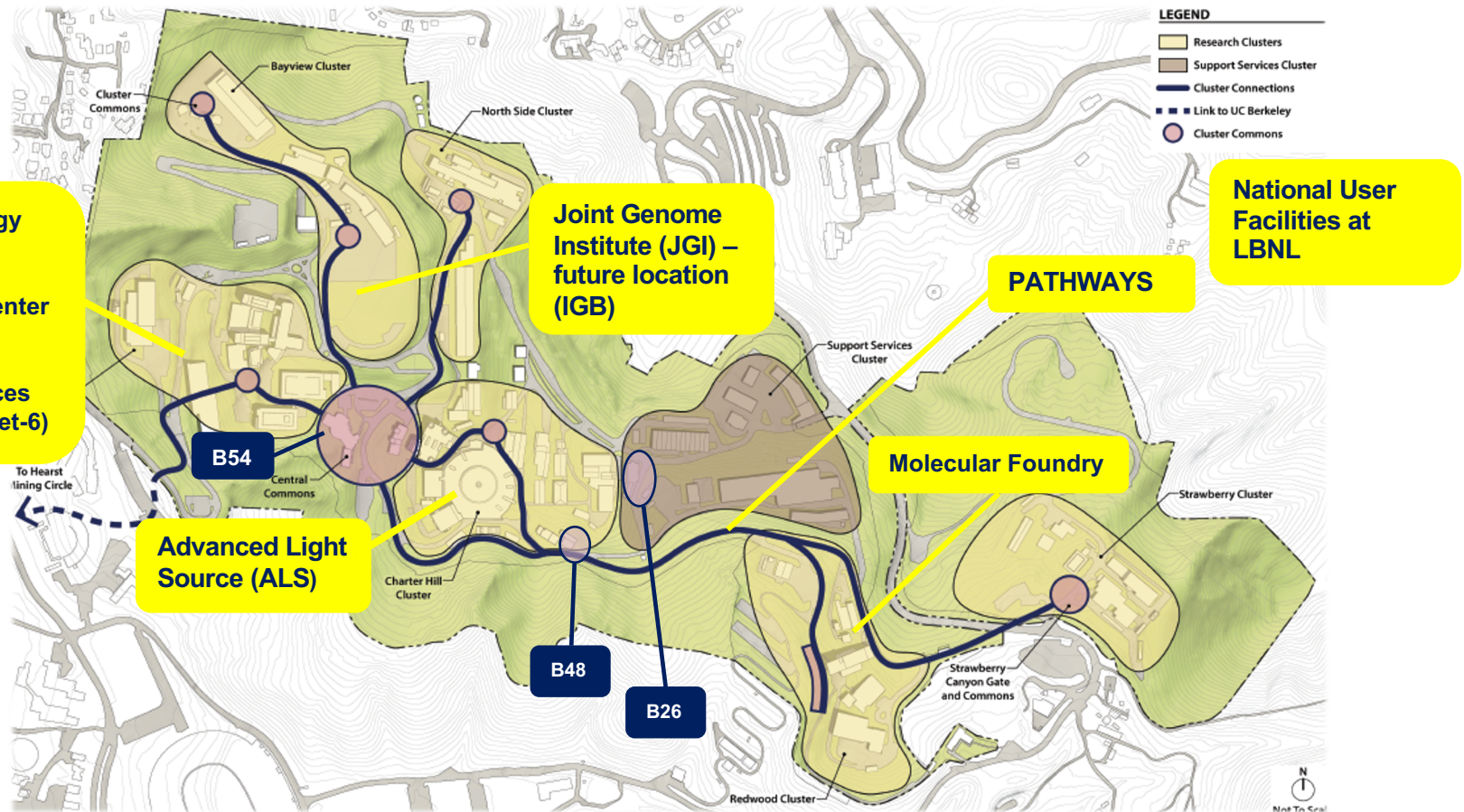
# SSM Welcome Center Goals



- Improve the safety of the occupants in seismically deficient buildings including the B54 Cafeteria, B26 Health Services & B48 Fire House
- Provide operational continuity in the event of an emergency
- Improve traffic and pedestrian circulation near cafeteria

# SSM Site Locations

- Detailed Seismic Study was performed, ranked exiting facilities for seismic stability
- New facility at B54 site - population center of the Lab
- Seismic Upgrade of the exiting B48 firehouse



# SSM Welcome Center Vision

## Project Vision: Heart of Campus, One-Stop-Shop for Operational Needs, Space for Connection and Collaboration

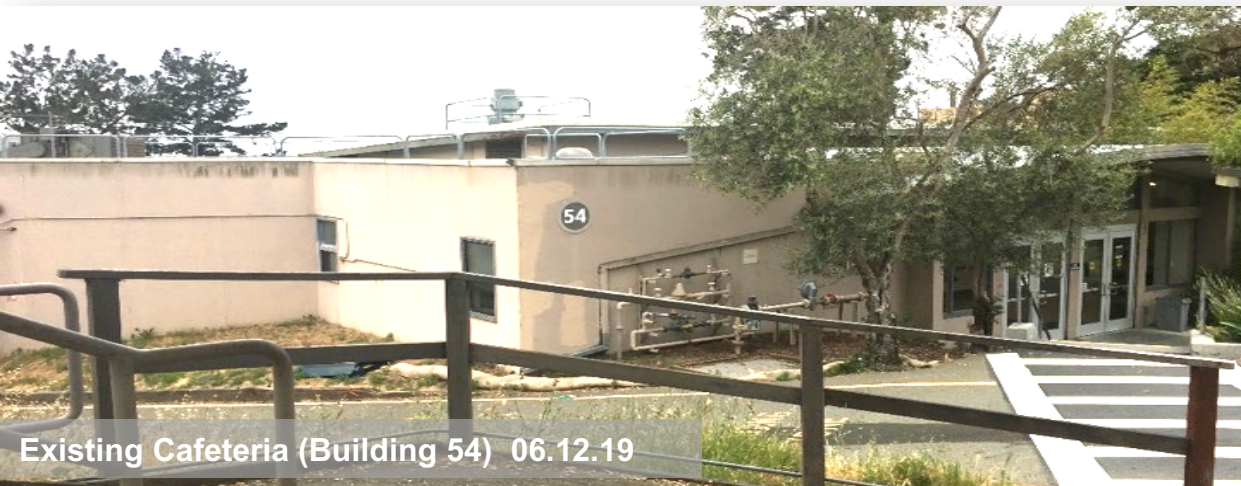


- Welcome Center for new employees and visitors
- Cafeteria
- Modern Health and Wellness Services
- Conference & Operational facilities

# SSM Site Plan



# SSM New and Existing

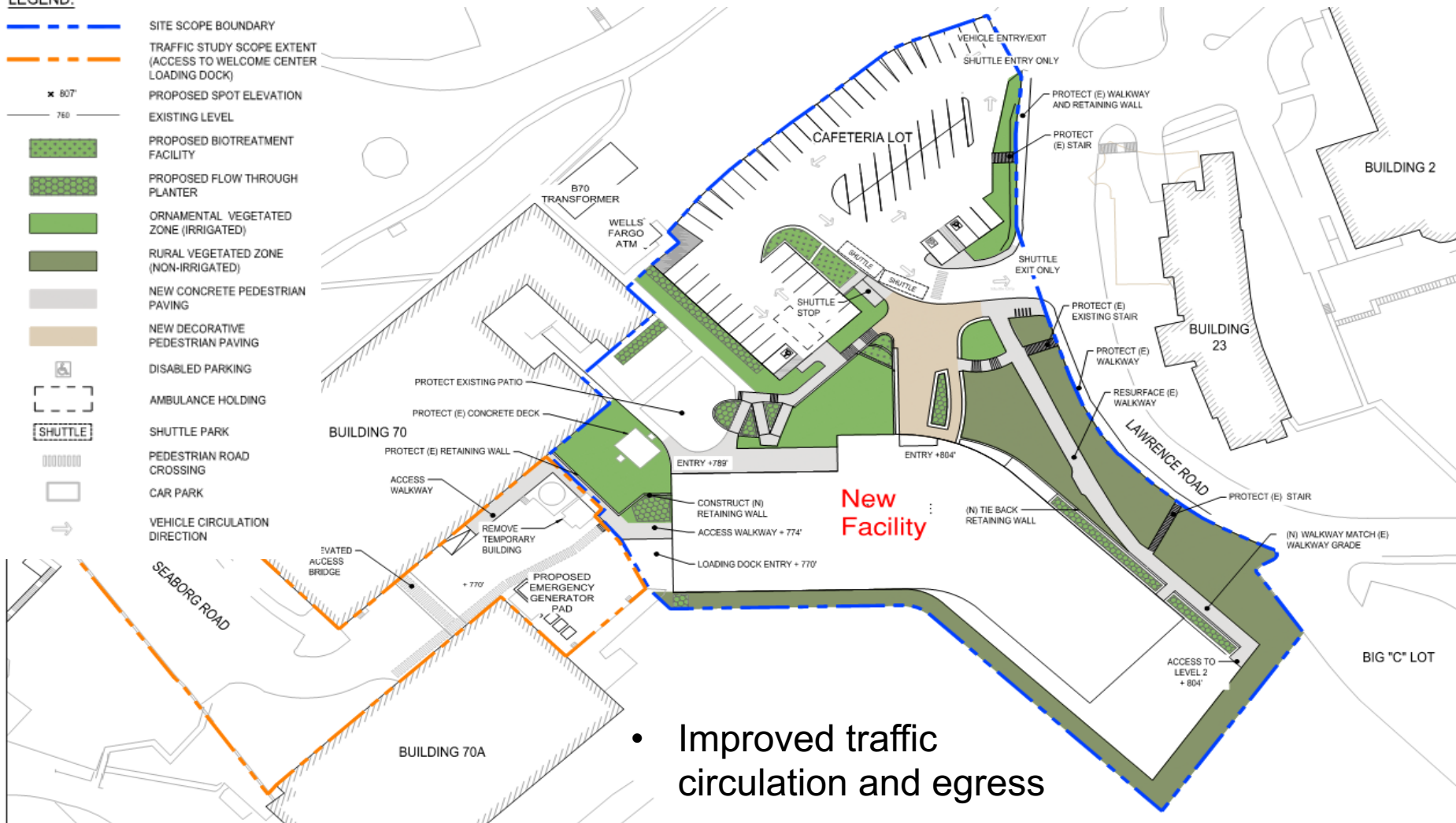
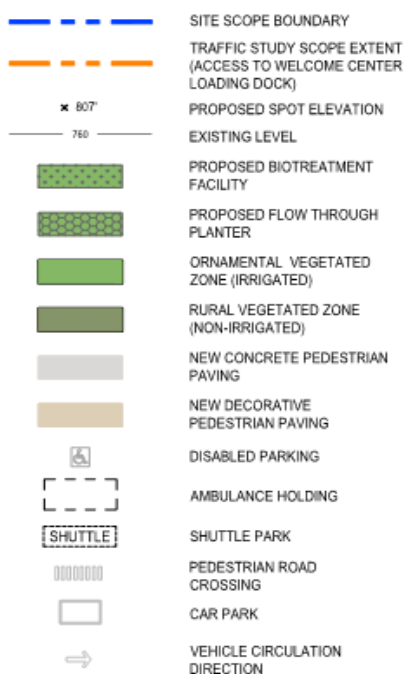


- 68 years old
- Rated seismically poor
- Functionally obsolete

Existing Cafeteria (Building 54) 06.12.19

# SSM Site Plan

## LEGEND:



- Improved traffic circulation and egress

# SSM Proposed Site Layout

Proposed Improved Transit Hub: view



# SSM Proposed Site Layout

Proposed Improved Transit Hub: view



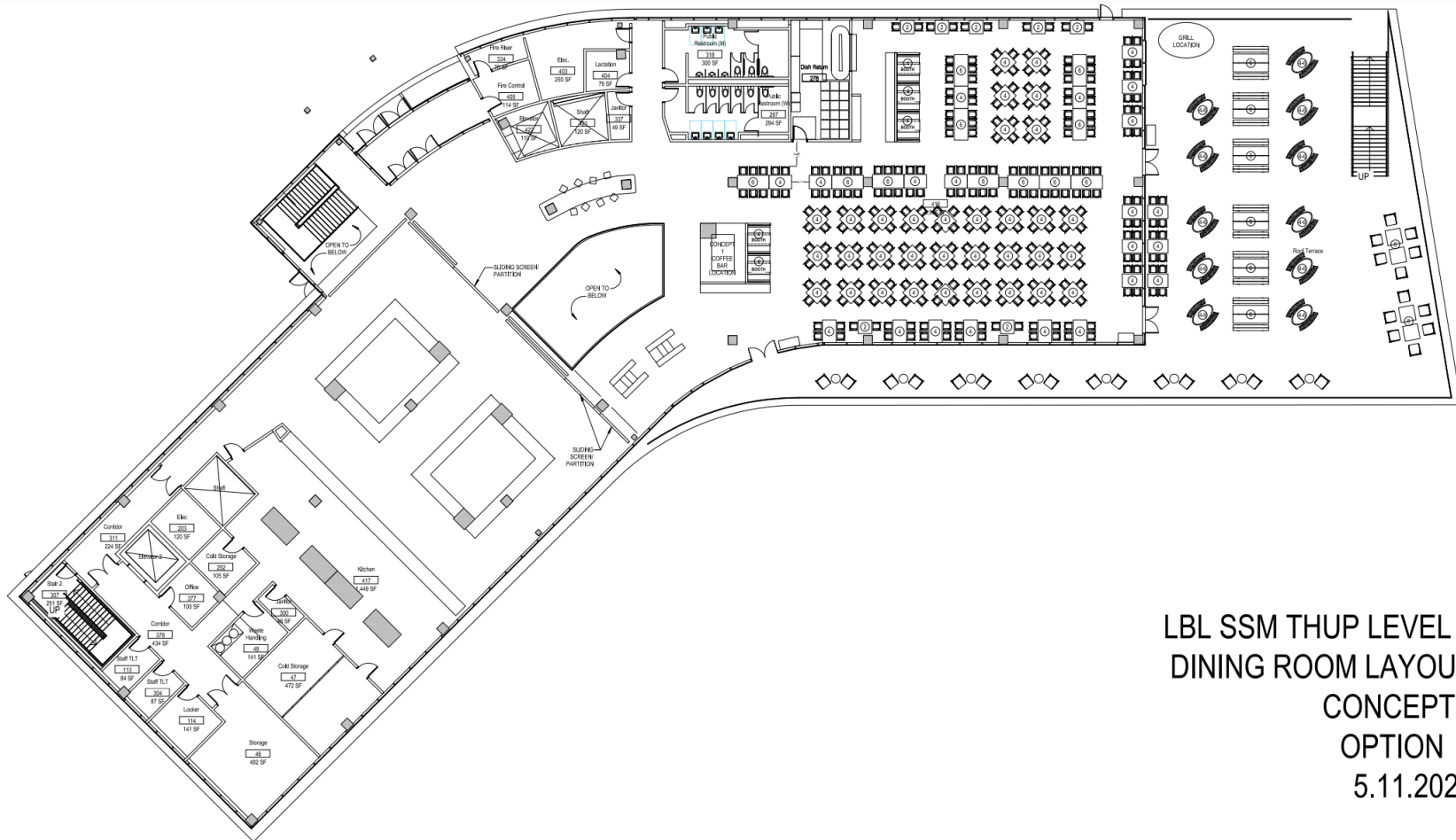
# New Facility at B54 site



## Three Story 46,000 GSF Building

- Level 2 - Cafeteria with outdoor dining - Entrance on grade from parking lot
- Level 1 - Health Services, Human Resources and Conference Space
- Level 0 - Loading Dock and Mechanical Equipment – The majority of this level is open to exterior and not conditioned

# SSM Level 2 - Cafeteria Layout



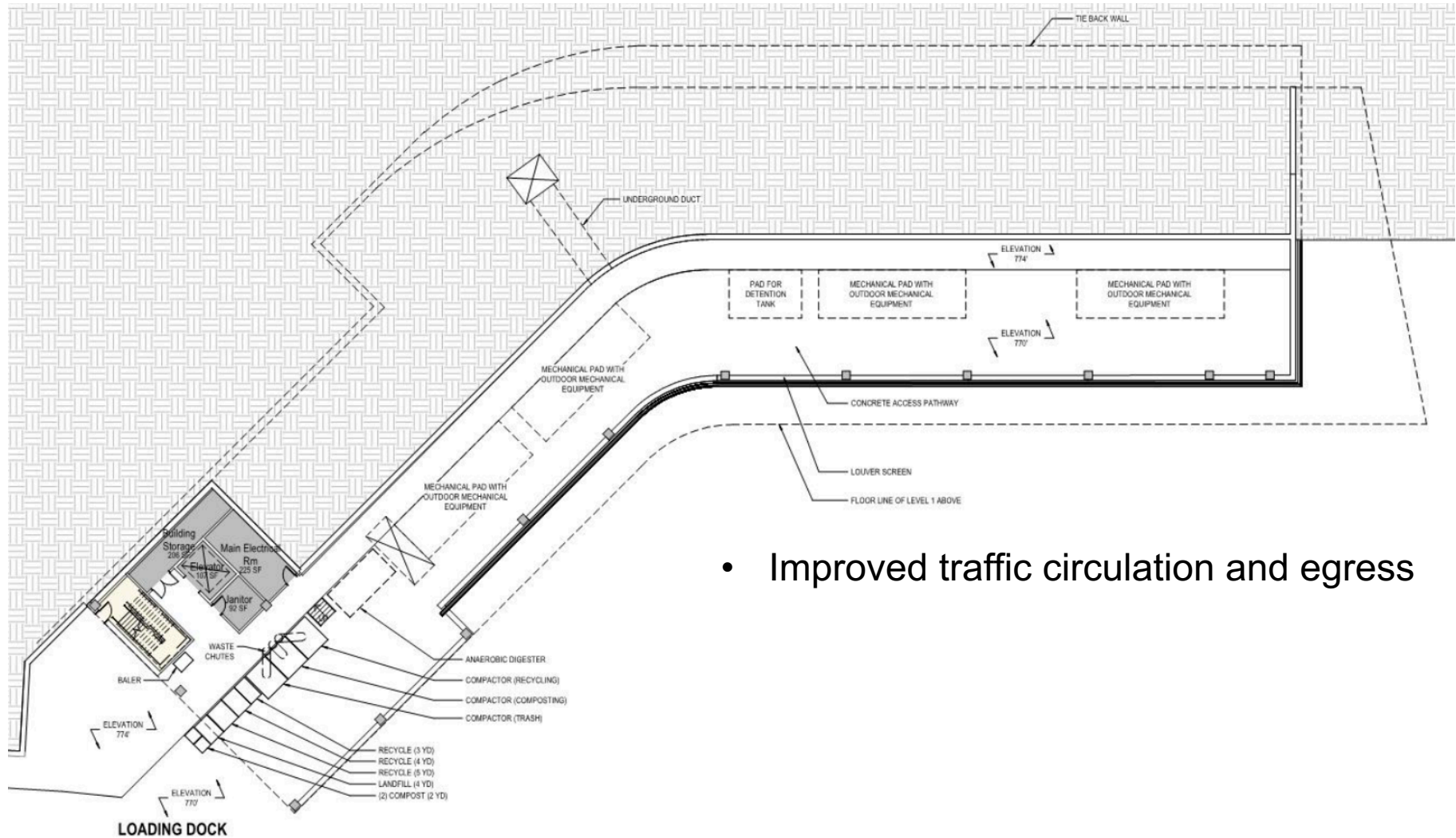
LBL SSM THUP LEVEL 2  
DINING ROOM LAYOUT  
CONCEPT 1  
OPTION 2  
5.11.2020

The floor plan shows a complex layout of rooms and corridors. The red-shaded area (bottom-left) contains clinical and health services, including a waiting area, exam rooms, a multi-purpose room, and various specialized offices. The blue-shaded area (top-right) contains administrative and support spaces, including HR offices, conference rooms, and storage. The yellow-shaded area (top-left) contains utility and support spaces, including IT/BDF, building storage, and a lightwell. The plan also shows a central corridor, restrooms, and a break-out area.

- Seismically sound space for Health Services
- Improved operational efficiencies
- Space to assemble and disseminate emergency information

- 12

# SSM Level 0 – Loading Dock



- Improved traffic circulation and egress

# SSM Preliminary Milestones (ES/EF)

Milestone 1 Description		Forecast
CD-0,	Approve Mission Need	September 2018 (A)
CD-1,	Approve Alternative Selection and Cost Range	September 2019 (A)
CD-3A,	Start of Demolition (NTP)	June 2021
CD-2/3,	Start of Building Construction (NTP)	April 2022
	Substantial Completion	June 2024
CD-4,	Project Completion	October 2024

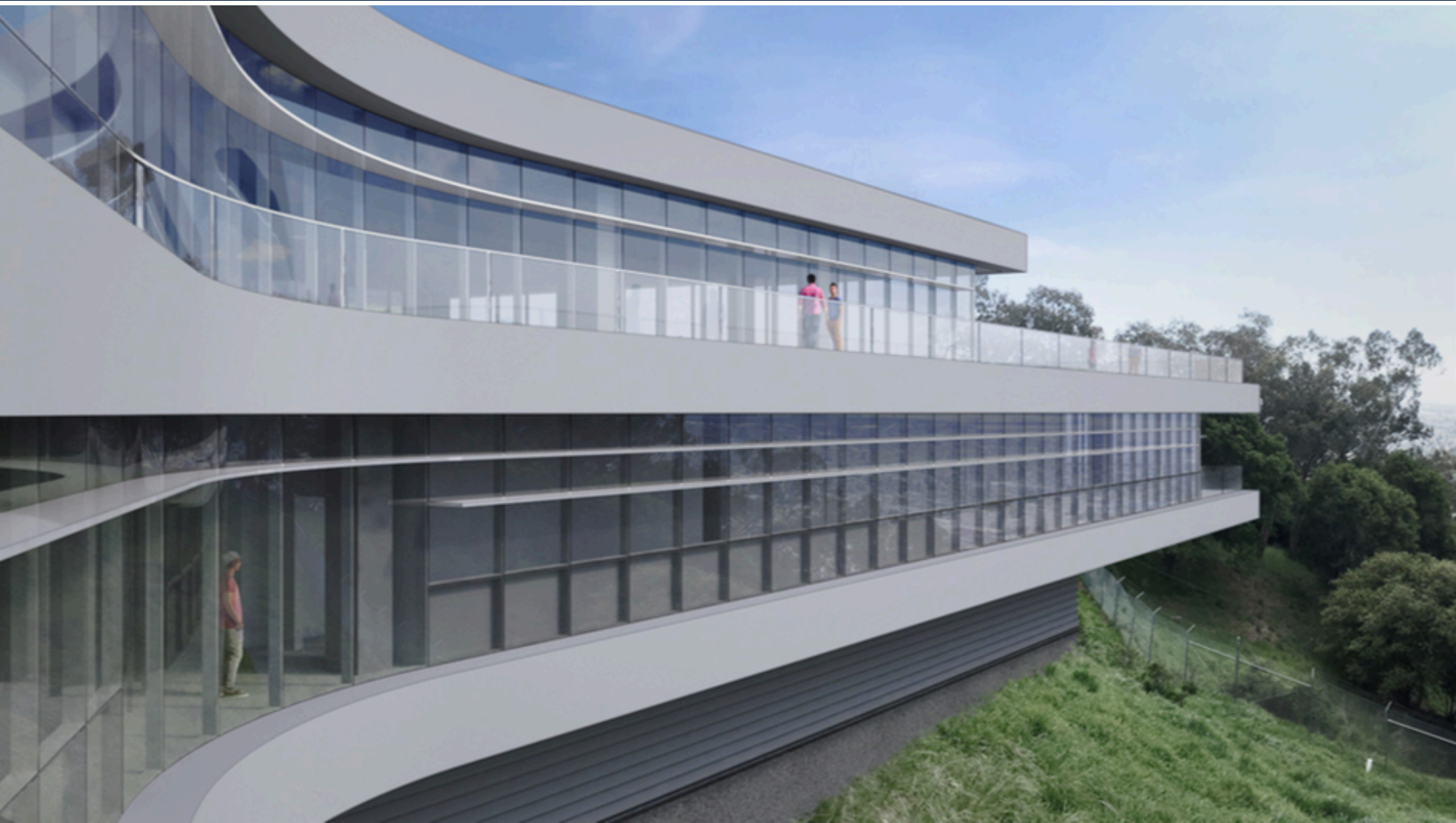
# SSM Welcome Center Interior



# SSM Interior



# SSM Exterior



U.S. DEPARTMENT OF  
**ENERGY**





# Thank You



U.S. DEPARTMENT OF  
**ENERGY**

